

Type 12DDG/15DDG Direct Drive Gauges



FEATURES

- *Sealed stainless steel case provides a weatherproof, dustproof corrosion-resistant gauge*
- *Spiral tube transmits motion directly to the pointer – no gears or bearings to wear out*
- *High impact-resistant polycarbonate window*
- *UL 404 listed for compressed gas (including oxygen) for 1500 psi, 2000 psi, 3000 psi and 4000 psi*

Ashcroft® direct drive pressure gauges are ideally suited for applications that demand reliability under rugged operating conditions. The heart of the design is a spiral bourdon tube of Beryllium Copper – long recognized as a superior spring material. The spiral tube transmits motion directly to the pointer. There are no gears or bearings to wear out!

These Ashcroft pressure gauges are constructed with a stainless steel case and an impact resistant polycarbonate window to endure applications that require a weather-tight, dustproof and corrosion resistant enclosure. Stringent process controls assure conformance to the most demanding customer quality expectations.

Choosing Ashcroft direct drive pressure gauges for your application is the right quality choice!

COMMONLY USED ON

Pumps, air compressors, portable tire inflators, portable oxygen equipment, self-contained breathing apparatus, portable industrial gas cylinders, a variety of other applications

HOW TO ORDER

Dial Size: 1½" _____ 15 DDG 01B XUL 3000#
Case Type Number: DDG _____
Connection Size/Location: ¼ NPT Back _____
Options: XUL for UL 404 Listing _____
Range: 0/3000 psi _____

PRODUCT SPECIFICATIONS

Ashcroft® Model No.: 12DDG, 15DDG

Sizes: 1¼" (12DDG), 1½" (15DDG)

Case: Stainless steel, sealed

Ring: None

Window: High impact-resistant polycarbonate

Dial: Black figures on white background

Pointer: Integral with Bourdon tube, black

Bourdon Tube: Beryllium copper, spiral; soft soldered to socket

Movement: None (direct reading)

Socket: Brass

Restrictor: Safety plug in 1500 psi — 4000 psi ranges

Connection: ½ NPT back

Ranges:

Available Ranges (psi)	Dial Arc			
	165°	180°	200°	235°
0/60		•		
0/100*				•
0/160				•
0/200				•
0/300				•
0/700			•	
0/1200		•		
0/1500	•			
0/2000	•			
0/3000	•			
0/4000	•			

*12DDG available in 180° arc

Repeatability: Better than 1%

Accuracy: Standard – 2% at setpoint (setpoint is normally 50% of range; other setpoints upon application)
UL Listed – 3.5% of span in middle three-fifths of scale

Operating Temperature: –40°F to 150°F

–40°C to 65°C

OPTIONAL FEATURES

Tube: Silicone dampened tube (for vibration)
Silicone filled tube (for corrosion protection)

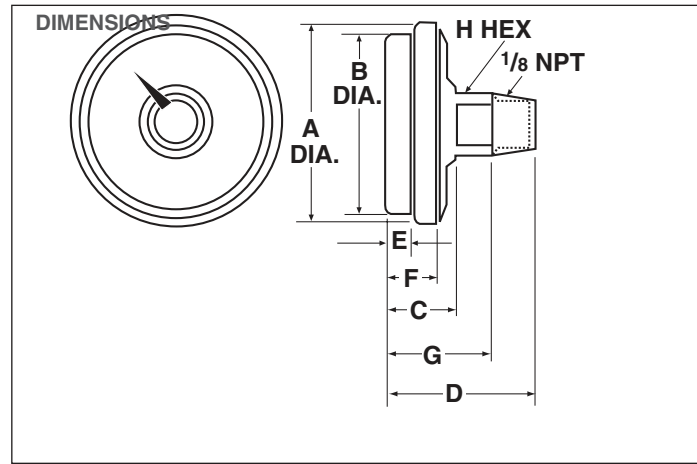
Socket: ¼ NPT
Throttle Plugs, 0.007", 0.013", 0.020", 0.031", 0.063" orifices
Non-standard configuration

Dials: Customized

Other: UL 404 Listed 1500 psi, 2000 psi, 3000 psi, 4000 psi, including oxygen

Note: Consult factory for high cycle life applications.

Type 12DDG/15DDG Direct Drive Gauges



MODEL NO. inches (mm)	A	B	C	D		E	F	G	H		J	WEIGHT oz / kg
				1/4 NPT	1/8 NPT				1/4 NPT	1/8 NPT		
12DDG	1.45 (37)	1.25 (32)	0.5 (13)	1.25 (32)	1.06 (27)	0.20 (5)	0.40 (10)	0.71 (18)	9/16 (14)	7/16 (11)	0.43 (11)	0.705 oz 0.020 kg
15DDG	1.68 (43)	1.48 (37)	0.5 (13)	1.25 (32)	1.06 (27)	0.20 (5)	0.40 (10)	0.71 (18)	9/16 (14)	7/16 (11)	0.43 (11)	0.776 oz 0.022 kg