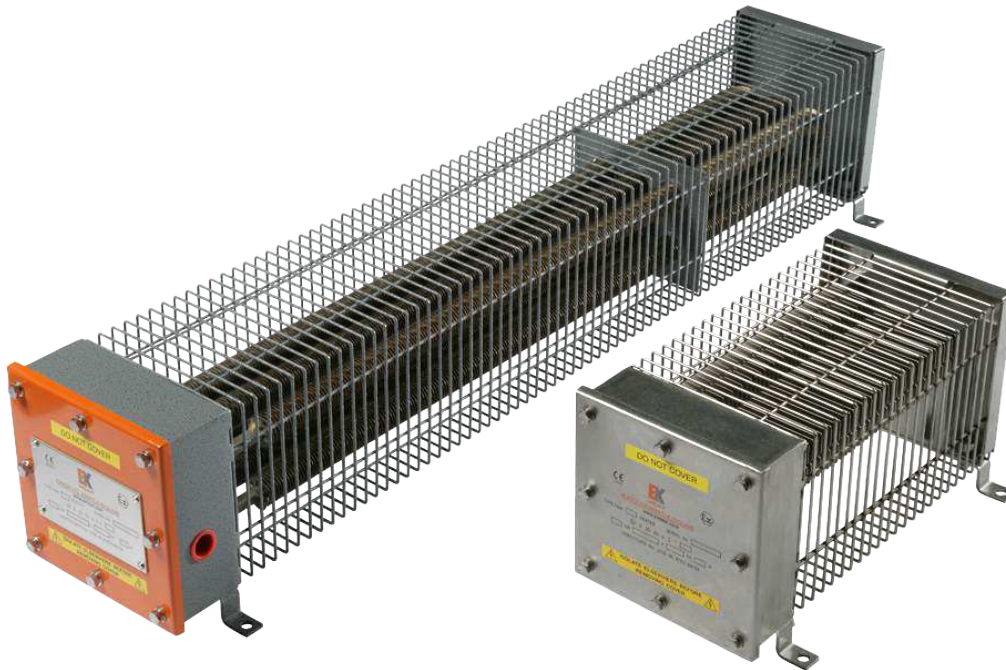


FAW Hazardous Area Air Warmers

The FAW range offers a versatile, lightweight air warming solution for small work and storage areas, and is suitable for use with 1 phase or 3 phase power supplies up to 660 volts. The range can also be configured for use with DC power supplies.

This range is certified for use in hazardous areas where the atmosphere is classified as a Zone 1 or 2 (IIA, IIB, IIC) gas group.

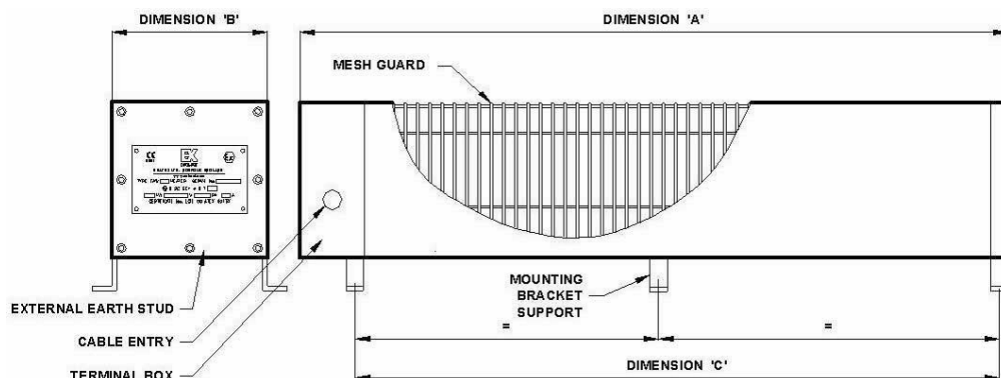


FEATURES

- Certified to meet the ATEX Equipment Directive and IECEx
- Temperature classes T2, T3, and T4 available
- Lightweight enclosure certified weatherproof to IP67
- Suitable for 1 phase or 3 phase (3 or 4 wire) or DC power supplies
- Suitable for floor or wall mounting
- A 20mm cable entry is provided as standard, additional entries can be provided as required
- Powder coated finish
- Optional range of flameproof room thermostats can also be provided
- Suitable for ambient temperatures from -60°C to +60°C (subject to conditions to be discussed with sales engineer)


TYPICAL APPLICATIONS

- Aircraft hangars
- Fuel servicing areas
- Chemical plants
- Offshore installations
- Battery stores
- Gas installations
- Paint / solvent stores
- Safety showers
- Frost protection
- Enclosures / cabinets



Model	T Class	Watts Rating	Voltage	Supports	Dimensions			Weight (kg)
					A	B	C	
Compact Range								
FAW-C-250	T2/T3	250	240 or 110	2	350	160	282	5
FAW-C-500	T2/T3	500	240 or 110	2	350	160	282	6
FAW-C-750	T2/T3	750	240 or 110	2	615	160	545	6
FAW-C-1000	T2/T3	1000	240 or 110	2	615	160	545	9
Standard Range								
FAW250	T2/T3	250	240/254 or 110	2	971	160	860	8
FAW500	T2/T3	500	240/254 or 110	2	971	160	860	10
FAW750	T2/T3	750	240/254/415/440 or 110	2	971	160	860	12
FAW1000	T2/T3	1000	240/254/415/440 or 110	2	1221	160	1145	14
FAW1500	T2/T3	1500	240/254/415/440 or 110	3	1741	160	1640	20
FAW2000	T2/T3	2000	240/254 or 110	3	1741	272	1640	32
FAW2000-SB	T2/T3	2000	240/254/415/440 or 110	3	1221	272	1145	34
FAW2500	T2/T3	2500	240/254 or 110	3	1741	272	1640	38
FAW3000	T2/T3	3000	240/254/415/440 or 110	3	1741	272	1640	42
FAW250	T4	250	240/254 or 110	3	1886	160	1784	13
FAW500	T4	500	240/254 or 110	3	1886	160	1784	17
FAW750	T4	750	240/254/415/440 or 110	3	1886	160	1784	21
FAW1000	T4	1000	240/254 or 110	3	1886	272	1784	33
FAW1250	T4	1250	240/254 or 110	3	1886	272	1784	38
FAW1500	T4	1500	240/254/415/440 or 110	3	1886	272	1784	42

Certification

ATEX / IECEx  II 2 G
Ex e IIC T2 to T4 Gb Zone 1 and 2 IP67
CU TR (formerly GOST)

Rating

250W to 3kW

Enclosure

Lightweight 316 stainless steel or powder coated mild steel

Controls

If required, the heaters can be controlled from the EXHEAT range of remote mounted thermostats available for use in hazardous areas

Mounting

Support feet are pre-drilled and suitable for floor mounting supplied as standard (wall mounting brackets available on request); heaters should be mounted horizontally with unrestricted air flow around the unit

Voltage

1 phase: 110 to 120V and 220 to 254V
3 phase: 380 to 440V (max voltage 660V standard units and 550V compact units, subject to design parameters)

Voltage Tolerance

+5/-10%



**THORNE &
DERRICK
INTERNATIONAL**

Thorne & Derrick
+44 (0) 191 490 1547
www.heatingandprocess.com