

# National Health Service

# Model engineering

# Specification

## D 08

### Thermostatic mixing valves (Healthcare premises)

Issue date: March 2015

Issue 4



THORNE &  
**DERRICK**  
INTERNATIONAL

Thorne & Derrick  
+44 (0) 191 490 1547  
[www.heatingandprocess.com](http://www.heatingandprocess.com)

## Contents

Page No

0. Introduction	4
1. Scope	4
2. Definitions	6
3. Construction	6
3.1 General	6
3.2 Materials	6
4. Sampling	6
5. Leak tightness	8
5.1 General	8
5.2 Principle	8
5.3 Apparatus	8
5.4 Leaktightness of the mixing valve upstream of the obturator and of the obturator	8
5.5 Leaktightness of the obturator of the mixing valve: cross flow between hot and cold water	9
5.6 Leak tightness of the mixing valve downstream of the obturator	9
5.7 Leaktightness of the manual diverter of the thermostatic mixing valve	9
5.8 Leaktightness of the diverter with automatic return of the thermostatic mixing valve	10
6. Durability	11
6.1 Durability of on/off (flow) control	11
6.2 Durability of diverters	12
6.3 Durability of thermostat	14
7. Performance	16
7.1 General	16
7.2 Sequence of tests	16
7.3 Flow rate and sensitivity of temperature control	17
7.4 Initial settings for thermal performance tests	19
7.5 Mixed water temperature overshoot on operation of diverter (manual or automatic return)	20
7.6 Mixed water temperature overshoot on operation of second outlet	21
7.7 Mixed water temperature overshoot on starting from ambient	23
7.8 Mixed water temperature overshoot on adjustment of mixed water temperature	24
7.9 Thermal shut-off	25
7.10 Temperature stability with changing water supply pressure	27
7.11 Temperature stability with changing water supply temperature	28
7.12 Temperature stability at reduced flow rate	29
8. Designation	32
9. Marking	32
10. Installation and operating instructions	33
11. Commissioning and in-service tests	33
11.1 Commissioning	33
11.2 In-service tests	35
Stage 1 Flowchart, audit of supplies	37
Stage 2 Flowchart, commissioning	38
Stage 3 Flowchart, Field testing	39
Annex A (normative)	40
Apparatus for durability test on thermostat	
Annex B (normative)	43
Apparatus for performance tests	

Annex C (normative)	45
Determination of thermometer response time	
Annex D (normative)	47
Testing of further saes	
Annex E (informative)	48
Assessment of transient values	
Annex F (informative)	48
Frequency of in-service tests	
Annex G (normative)	49
flowrate & sensitivity test of temperature control, alternative to angular or linear movement.	

## 0. Introduction

It has been recognised that users of domestic hot water for ablutionary purposes in care establishments are often at risk of injury by scalding. For some time this risk has been attenuated by the use of thermostatic mixing valves. However, the existing Standards available for such products are more applicable to normal domestic use. In order to assure the performance of thermostatic mixing valves providing a significantly reduced risk of emitting water at an unsafe temperature this Specification has been prepared.

## 1. Scope

This Specification specifies the performance, material requirements and test methods for thermostatic mixing valves for use in care establishments (e.g. hospitals, nursing homes, and residential care homes etc.) where the users (e.g. patients, residents etc.), by virtue of their physical or mental condition, are deemed to be at greater risk of injury in their use of domestic hot water than would be the case for normally able persons in their own dwelling. Thermostatic mixing valves complying with this Specification are also suitable for other applications where the risk of scalding must be reduced.

NOTE 1: An assessment of the risk should be carried out.

Thermostatic mixing valves complying with this Specification are designated according to operating pressure range and the intended ablutionary application (see clause 8).

NOTE 2: Application for washbasin use is included for those situations where the risk assessment shows that a greater level of protection is necessary.

This Specification applies to thermostatic mixing valves installed for ablutionary purposes in care establishments in which the hot and cold water supplies are normally within the limits specified in Table 1 for each operating pressure range and the mixed water temperature is set to the value specified in Table 2 appropriate to the application.

NOTE 3: Some of the performance requirements represent the application of abnormal water supply conditions outside these limits to ensure that under specified fault conditions the mixed water temperature remains safe.

Thermostatic mixing valves having integral on/off, or flow control, for single point use are included in the scope of this Specification. Thermostatic mixing valves without flow control and those suitable for supplying a small number of outlets are also included.

NOTE 4: Multiple outlets should not be considered where the length of the downstream dead-leg may aggravate the risk of bacterial growth. (Guidance on this is given in the Department of Health Technical Memorandum 04-01 Part A.

Thermostatic mixing valves with a user adjustable mixed water temperature up to a pre-set maximum and thermostatic mixing valves intended to be installed and used with no user accessible adjustment of the mixed water temperature are both included in the scope of this Specification.

NOTE 5: Only thermostatic mixing valves with no user accessible adjustment of the mixed water temperature should be used for applications in which two or more outlets may discharge simultaneously when operated by two or more users at the same time. Thermostatic mixing valves with user accessible adjustment of the mixed water temperature may be used with two or more outlets which do not

discharge simultaneously, (e.g. they are supplied through a diverter) provided that the mixed water temperature adjustment is appropriate to each application.

NOTE 6: When designations of use are referred to in this document, if prefixed by a / then the valve will have multiple designations of use. For example HP-B/S/W, LP-B/S, this valve is approved for High Pressure Bidet, Shower and washbasin and Low pressure Bidet and shower use only.

Thermostatic mixing valves of nominal size up to and including DN 25 are included in the scope of this Specification.

**Table 1: Conditions for normal use**

<b>Operating pressure range</b>	<b>High pressure</b>	<b>Low pressure</b>
Maximum static pressure - bar	10	10
Flow pressure, hot and cold - bar	1 to 5	0.2 to 1
Hot supply temperature - °C	55 to 65	55 to 65
Cold supply temperature - °C	5 to 20	5 to 20

**Table 2: Mixed water temperature**

<b>Application and Designation</b>	<b>Mixed water temperature (at point of discharge)°C</b>
Bidet (B)	38 max.
Shower (S)	41 max.
Washbasin (W)	41 max.
Bath (44°C fill) (T44)	44 max.
Bath (46°C fill) (T46)	46 max.
Diverter Bath/Shower (D44)	Bath fill 44 max, Shower 41 max
Diverter Bath/Shower (D46)	Bath fill 46 max, Shower 41 max

NOTE 1: For washbasins, washing under running water is assumed.

NOTE 2: Bath fill temperatures of more than 44°C should only be available when the bather is always under the supervision of a competent person (e.g. nurse or care assistant).

NOTE 3: A thermostatic mixing valve having multiple designations (see 8) (i.e. it is capable of satisfying the requirements of this specification for more than one application) should be re-set on site to suit its other designations.

NOTE 4: A thermostatic mixing valve having a diverter designation (D) must be capable of changing and controlling the mixed water outlet temperature as defined above when the supply path is changed from bath to shower or shower to bath.

## 2. Definitions

**2.1 A thermostatic mixing valve** is a valve, with one or more outlets, which mixes hot and cold water and automatically controls the mixed water to a user selected or pre-set temperature.

NOTE: If provision for controlling the flow rate between no flow and maximum flow is included this may be by means of a different motion of the temperature control or by a separate control (see Annex G).

**2.2 User adjustable** in respect of the mixed water temperature means that there is a control accessible to the user which enables the temperature to be adjusted between a pre-determined maximum and some lower value. The pre-determined maximum is set on commissioning of the installation and shall not exceed the maximum permitted for the application (see Table 2).

**2.3 Pre-set** in respect of the mixed water temperature means that there is no user accessible adjustment and the mixed water temperature is set to a fixed value. The fixed value is set on commissioning of the installation and shall not exceed the maximum permitted for the application (see Table 2).

**2.4 Obturator**, mechanism that arrests the water flow (on/off control).

**2.5 Transient**, measurement of temperature change over time.

**2.6 Atmospheric discharge nozzle**, an integral open outlet water spout and may include aerators flow straighteners and flow regulators.

## 3. Construction

### 3.1 General

If the thermostatic mixing valve is provided with removable devices (e.g. flow rate regulators) in the inlets, and these are intended to be removed on commissioning in order to convert the mixing valve to another designation, then the mixing valve shall be supplied with these devices fitted.

### 3.2 Materials

All materials in contact with water shall comply with BS 6920 and the UK Water Industry Guidance upon BS 6920.

## 4. Sampling

The samples required for testing shall be selected at random from stock. In the event that one sample should fail to satisfy a designation then, annex D shall be referred to. Annex D describes a provision for the testing of further samples. If two valves fail to satisfy a designation then no further testing shall be undertaken.

When tested, the thermostatic mixing valve shall be fitted with the anti-backsiphonage devices (e.g. check valves etc.) required in use. These shall be integral with the mixing valve, or supplied with it, or be specified by the manufacturer. If not fitted to the test samples these devices shall be fitted in the connected pipe work as close as possible to the mixing valve.

For the tests described in clauses 5, 6 and 7 three samples are required, denoted by A, B and C. These shall be tested in the sequence shown in Figure 1.

Where two applications are served by two separately operating mechanisms sharing common supply connections each operating mechanism shall be tested as though it were a separate valve.

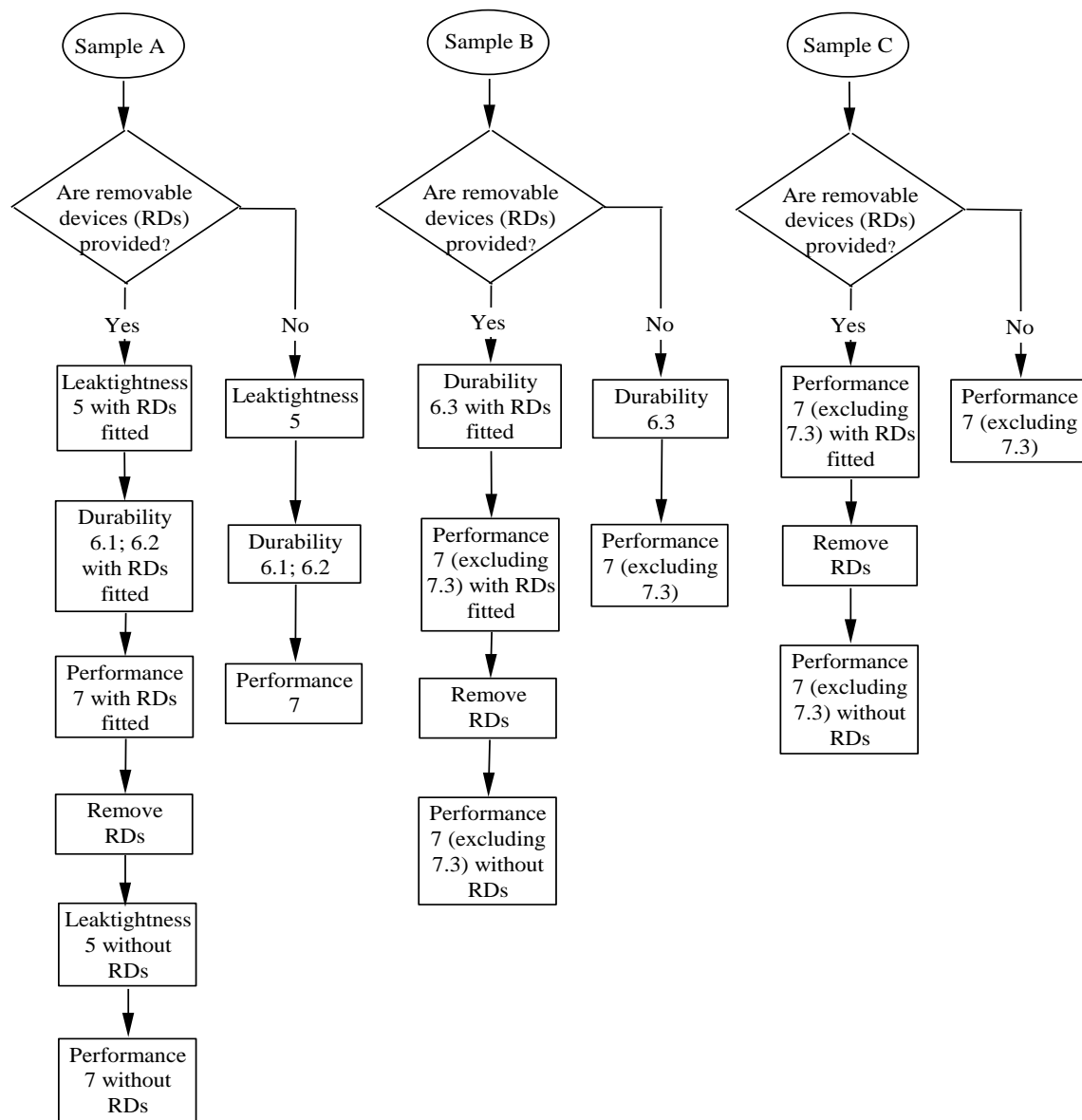
Sample A only shall be tested for flow rate according to clause 7.3, where samples B and C utilise alternative inlet connection sizes the flowrate will need to be verified for the appropriate designation.

For valves with designations, D44 and D46 samples A and C shall be tested to the requirements of clauses 7.4 to 7.12 for all relevant applications.

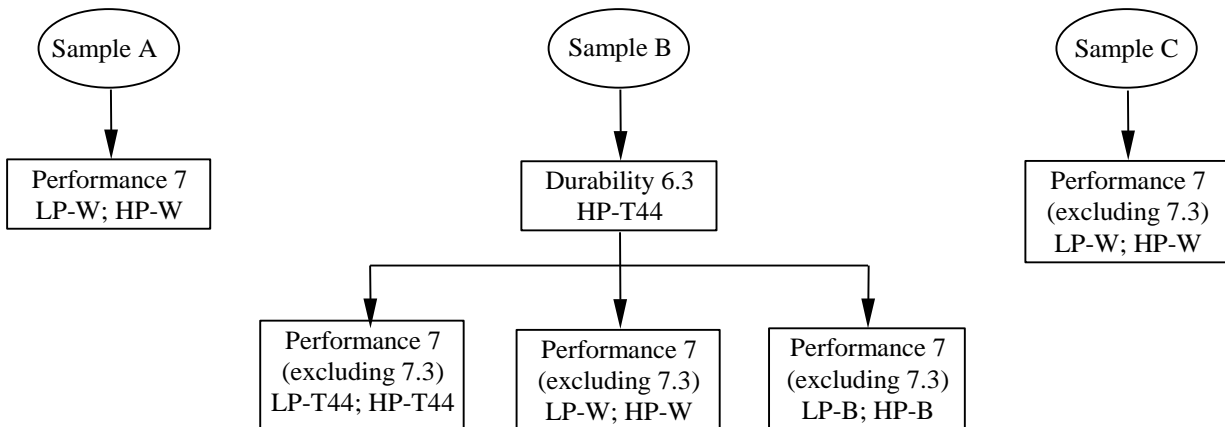
In all other cases samples A and C shall be tested to the requirements of clauses 7.4 to 7.12 for the designation in each operating pressure range having the highest mixed water temperature setting of those designations, or applications, with the lowest designated flow rate.

For all valves sample B shall be tested to the requirements of clauses 7.4 to 7.12 for all applications.

NOTE: As an example the performance tests applicable to designations HP-B/W/T44 and LP-B/W/T44 are shown in figure 2.



**Figure 1: Test sequence**



Flowrate tests to be undertaken for Tub and other uses

**Figure 2: Example of performance test sequence for designations –HP-B/W/T44 & -LP-B/W/T44**

## 5. Leak tightness

### 5.1 General

Thermostatic mixing valves certified as complying with either BS EN 1111 or BS EN 1287 will be regarded as complying with the leak tightness requirements of this Specification. In all other cases the following tests shall be applied.<sup>2)</sup> and shall be tested without shower hoses.

### 5.2 Principle

This consists of checking, under cold water pressure, the leaktightness of:

- the obturator: (5.4 and 5.5) if provided
- the complete mixing valve (5.4 and 5.6)
- Diverter's with manual control (5.7) or automatic return (5.8) if provided.

NOTE: Where a diverter with automatic return is regarded as performing an anti-backsiphonage function, additional requirements may be applied.

### 5.3 Apparatus

A hydraulic test circuit as shown in Figure A.1 capable of supplying the static and dynamic pressures required and of maintaining them throughout the duration of the test.

### 5.4 Leaktightness of the thermostatic mixing valve upstream of the obturator and of the obturator

In the case of thermostatic mixing valves without obturators (i.e. with no on/off or flow control) the outlet orifice shall be artificially closed.

#### 5.4.1 Procedure

- Connect the two water supplies to the mixing valve

---

<sup>2)</sup> The tests described here reproduce almost exactly the text of the ENs referred to.

- With the outlet orifice open and the obturator closed, apply a water pressure of  $16 \pm 0.5$  bar to the thermostatic mixing valve for  $60 \pm 5$  s for the full operating range of the temperature control device.

In the case of single sequential thermostatic mixing valves the control shall be left in the 'flow closed' position.

#### **5.4.2 Requirements**

- a) Verification of leaktightness upstream of the obturator.

For the duration of the test there shall be no leakage or seepage through the walls.

- b) Verification of leaktightness of the obturator.

For the duration of the test there shall be no leakage at the obturator.

#### **5.5 Leaktightness of the obturator of the thermostatic mixing valve: cross flow between hot and cold water**

In the case of thermostatic mixing valves without obturators (i.e. with no on/off or flow control) the outlet orifice shall be artificially closed.

When testing a single sequential thermostatic mixing valve the control shall be left in the 'flow closed' position.

#### **5.5.1 Procedure**

- Connect one inlet of the thermostatic mixing valve to the test circuit
- With the outlet orifice open and the obturator closed, apply a water pressure of  $4 \pm 0.2$  bar to the thermostatic mixing valve for  $60 \pm 5$  s for the full operating range of the temperature control device.
- Repeat the test, reversing the water supply connection to the other inlet.

#### **5.5.2 Requirements**

For the duration of the test there shall be no leakage or seepage at the outlet (not applicable to thermostatic mixing valves without obturator) or at the end of the unconnected inlet.

#### **5.6 Leak tightness of the thermostatic mixing valve downstream of the obturator**

##### **5.6.1 Procedure**

- Connect the two water supplies to the thermostatic mixing valve.
- With the outlet orifice closed and the obturator open apply a water pressure of  $4 \pm 0.2$  bar to the thermostatic mixing valve for  $60 \pm 5$  s, for the full operating range of the temperature control device.
- Repeat the test with a water pressure of  $0.2 \pm 0.05$  bar for  $60 \pm 5$  s.

##### **5.6.2 Requirements**

For the duration of the test there shall be no leakage or seepage.

#### **5.7 Leaktightness of the manual diverter of the thermostatic mixing valve**

##### **5.7.1 Procedure**

- Connect the thermostatic mixing valve, in its position of use, to the test circuit

- Put the diverter in the bath position, with the bath outlet artificially closed and the shower outlet open.
- Apply the static water pressure appropriate to the designation given in Table 3 for  $60 \pm 5$  s. Observe the outlet to shower.
- Gradually reduce to a static water pressure of  $0.2 \pm 0.05$  bar and maintain for  $60 \pm 5$  s. observe the outlet to shower.
- Put the diverter in the shower position with the shower outlet artificially closed and the bath outlet open.
- Apply the static water pressure appropriate to the designation given in Table 3 for  $60 \pm 5$  s. observe the bath outlet.
- Gradually reduce to a static water pressure of  $0.2 \pm 0.05$  bar and maintain for  $60 \pm 5$  s. observe the bath outlet.

**Table 3: Test pressures for manual diverters**

<b>Abbreviated designation</b>	<b>Static water pressure bar</b>
All -LP-	$2 \pm 0.1$
All -HP-	$4 \pm 0.2$

### **5.7.2 Requirements**

For the duration of the test there shall be no leakage at the outlet points indicated.

## **5.8 Leaktightness of the diverter with automatic return of the thermostatic mixing valve**

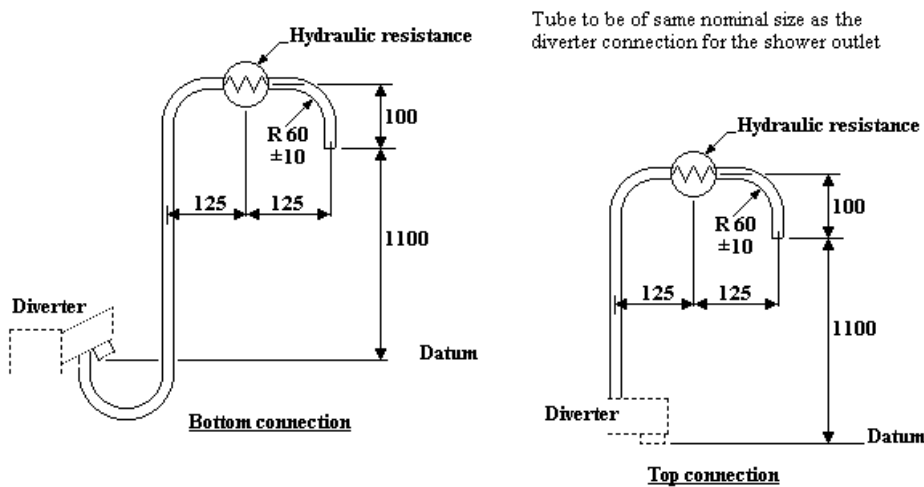
### **5.8.1 Procedure**

- Connect the thermostatic mixing valve, in its position of use, to the test circuit with the outlets fully open.
- Put the diverter in the bath position and apply a dynamic water pressure equal to the ‘initial flow pressure’, appropriate to the designation, given in Table 4 for  $60 \pm 5$  s. Check for leakage at the shower outlet.
- Fit to the shower outlet the hydraulic resistance identified in Table 4 appropriate to the designation.
- Maintaining the flow pressure at the ‘initial’ value put the diverter in the ‘flow to shower’ mode. Observe the bath outlet for  $60 \pm 5$  s and note any leakage.
- With the diverter still in the shower position, reduce the dynamic pressure to a value equal to the ‘reduced flow pressure’, appropriate to the designation, given in Table 4. Check that the diverter is not dislodged. Maintain this pressure for  $60 \pm 5$  s and observe the bath outlet and note any leakage.
- Turn the water off. Check that the diverter returns to the bath position.
- Disconnect the hydraulic resistance and re-open the flow control and pressure measuring devices. Re-apply the dynamic pressure equal to the ‘reduced flow pressure’, appropriate to the designation, given in Table 4 for  $60 \pm 5$  s. Check for leakage at the shower outlet.

**Table 4: Test pressures and flow resistances for diverters with automatic return**

Abbreviated designation	Initial flow pressure bar	Reduced flow pressure bar	Flow resistance
All -LP-	0.8± 0.04	0.2± 0.01	Complying with Figure 1 and calibrated to a flow rate of 9 L/min at a flow pressure of 0.2 bar referenced to the datum shown
All -HP-	4± 0.2	0.5± 0.05	A flow resistance calibrated to a flow rate of 15 L/min at a flow pressure of 3 bar

All Dimensions are in millimetres  
Unspecified tolerance ± 10%



**Figure 3: Hydraulic resistance for low pressure diverters with automatic return**

### 5.8.2 Requirements

- For the duration of the test there shall be no leakage.

## 6. Durability

### 6.1 Durability of on/off (flow) control

#### 6.1.1 General

Thermostatic mixing valves certified as complying with either BS EN 1111 or BS EN 1287 will be regarded as complying with the requirements of this Specification for the durability of the on/off (flow) control. In all other cases the following tests <sup>3)</sup> shall be applied to mixing valves with an on/off (flow) control.

#### 6.1.2 Principle

This consists of subjecting the flow control devices to a specific number of opening and closing movements under specified hot and cold water conditions at the pressure and temperature specified.

<sup>3)</sup> The tests described reproduce almost exactly the corresponding text of the ENs mentioned.

### 6.1.3 *Apparatus*

A suitable test rig for operating the devices in line with their normal function.

The speed of operation of the control devices is to be set at 60°/s angular velocity (i.e. 0.017 s/degree of angle). For linear movement the velocity shall be 0.04 m/s.

NOTE: Due to the diversity of product design and especially for single sequential control thermostatic mixing valves it will be necessary for the test house and manufacturer to liaise to produce a valid test apparatus and agree detailed test specifications.

### 6.1.4 *Procedure*

Connect the thermostatic mixing valve to a suitable test apparatus designed to operate the on-off devices to within 90 - 95% of their intended travel.

Supply hot water at a temperature of  $65 \pm 2^\circ\text{C}$  and cold water at a maximum of  $30^\circ\text{C}$  to the mixing valve under test.

With the thermostatic mixing valve open, adjust the water pressure of the two supply circuits to the appropriate value for the designation given in Table 5 and with the exception of single sequential thermostatic mixing valves set the temperature control device to a mean temperature position of  $38^\circ\text{C}$ .

Subject the thermostatic mixing valve to 50 000 on/off cycles.

**Table 5: Supply pressures for durability tests**

<b>Abbreviated designation</b>	<b>Water pressure bar</b>
All -LP-	1 max.
All -HP-	$4 \pm 0.2$

### 6.1.5 *Requirements*

During the test no failure of any component part shall occur.

Verify the leaktightness of the thermostatic mixing valve by the application of the test given in 5.4 to 5.6

## 6.2 **Durability of diverters**

### 6.2.1 *General*

Thermostatic mixing valves certified as complying with either BS EN 1111 or BS EN 1287 will be regarded as complying with the requirements of this Specification for the durability of the diverter. In all other cases the following tests <sup>4)</sup> shall be applied to mixing valves with a diverter.

This clause specifies two methods of test for the mechanical endurance of diverters of thermostatic mixing valves: one for manual diverters and one for diverters with automatic return and gives the corresponding specifications.

---

<sup>4)</sup> The tests described reproduce almost exactly the corresponding text of the ENs mentioned.

## 6.2.2 *Principle*

The principle of the test is to subject the diverter to a specified number of operations, with the thermostatic mixing valve being supplied alternately with cold water, and with hot water at  $65 \pm 2^\circ\text{C}$  (thermal shocks), in order to test its behaviour over a period of time, taking into account temperature.

## 6.2.3 *Apparatus*

### 6.2.3.1 *Manual diverter*

- Automatic machine ensuring alternating movement of the diverter at a rate of  $15 \pm 1$  returns per minute.
- Supply circuits comprising a pump or a similar device by means of which the required static pressure can be obtained for cold water at  $< 30^\circ\text{C}$  and hot water at  $65 \pm 2^\circ\text{C}$ .

### 6.2.3.2 *Diverter with automatic return*

- Mechanism for moving the diverter to the shower/shower head position under the conditions defined in 5.8.
- Supply circuits identical to those defined in 6.2.3.1 but also comprising an automatic quick action valve to cut off the supply to the thermostatic mixing valve under test.

## 6.2.4 *Procedure*

### 6.2.4.1 *Manual diverter*

Mount the thermostatic mixing valve, as supplied, onto the machine and connect both inlets to the supply circuits.

Connect the drive device to the diverter lever by means of a flexible component.

With the thermostatic mixing valve closed, adjust the water pressure on the two supply circuits to the appropriate value for the designation given in Table 5.

With the temperature control device set to the full hot position adjust the flow rate to between 4 and 6 l/min at the highest flowing outlet. This flow adjustment shall be made by means of the independently operating on/off (flow) control, or in the absence of this device by partially obstructing the outlet.

Subject the diverter to an endurance test of 30 000 cycles, each cycle comprising a return movement between the extreme positions. Note: if the diverter mechanism controls the on/off function of the valve then the mechanism needs to undertake 50 000 operations in accordance with clause 6.1.4.

Throughout the test, supply the thermostatic mixing valve alternately at both inlets with cold water for  $15 \text{ min} \pm 30\text{s}$  then hot water for  $15 \text{ min} \pm 30\text{s}$ .

Throughout the test, record any incidence of leaks, deformations, fracture, etc.

After 30 000 cycles, check the leaktightness of the diverter as defined in 5.7.

### 6.2.4.2 *Diverters with automatic return*

Fit to the shower outlet the hydraulic resistance identified in Table 4 appropriate to the designation.

Mount the thermostatic mixing valve as supplied on to a support and connect both inlets to the supply circuits.

With the thermostatic mixing valve closed, adjust the water pressure on the two supply circuits to the appropriate value for the designation given in Table 5.

With the temperature control device set to the full hot position adjust the flow rate to a value that just permits proper operation of the diverter. This flow adjustment shall be made by means of the independently operating on/off (flow) control, or in the absence of this device by partially obstructing the outlet.

Subject the diverter to an endurance test of 30 000 cycles, one cycle being defined as follows:

With the diverter in the “flow to bath” position, allow a flow of water for  $5 \pm 0.2$ s through the spout.

Move the diverter to the “flow to shower” position and allow a flow of water for  $5 \pm 0.2$ s.

Cut off the supply to the thermostatic mixing valve by means of the quick acting valve, allow the diverter to return to the “flow to bath” position then re-open the supply.

Throughout the test, supply the thermostatic mixing valve alternately at both inlets with cold water for 15 min  $\pm 30$  seconds then hot water for 15 min  $\pm 30$ s.

Throughout the test, record any incidence of leaks, deformations, fracture, etc.

After 30 000 cycles, check the leaktightness of the diverter as defined in 5.8.

### **6.2.5 Requirements**

During the test, no deformation, component fracture, blockage of the mechanism, leakage from the nozzle or shower/shower head or the diverter control joint shall be noted.

At the end of the test, check the leaktightness:

- in the conditions specified in 5.7 for manual diverters.
- in the conditions specified in 5.8 for diverters with automatic return.

## **6.3 Durability of thermostat**

### **6.3.1 General**

The durability of the thermostat shall be verified by means of the test described in 6.3.3. The test shall be conducted on one of the 3 samples referred to in clause 4 before it is subjected to the tests in clause 7.

When the thermostatic mixing valve is suitable for more than one application the durability of the thermostat need only be verified for the designation, which represents the highest operating pressure range, the highest flow rate and the highest mixed water temperature setting of the applicable designations.

The durability cycling shall be carried out using the apparatus described in Annex A.

If the test rig is supplied with recycled water this shall not deteriorate in quality during the test, and shall remain free of grease, debris etc.

### **6.3.2 Purpose**

The purpose of the test is:

- a) To subject the thermostat to an accelerated cycle of operations which is representative of the normal operating conditions.

b) To pre-condition one sample before carrying out the performance tests described in 7.

NOTE: The most common exercise for the thermostat is in responding to a draw-off after a period of non-use (see 7.5). The durability cycle represents a large number of these responses, which are unlikely to be able to exceed 25 per day, as cooling to ambient temperature would not then be achieved. Periodic thermal shut-offs are called for at a rate equivalent to about one every 3 months (2500 cycles).

**Table 6: Settings for thermostat durability test**

	Hot supply		Cold supply		Mixed water	
	Flow pressure bar	Temp. °C	Flow pressure Bar	Temp. °C	Flow l/min	Temp. °C
Initial setting	Within operating pressure range (see Table 1)	$60 \pm 5$	Equal to hot supply pressure $\pm 10\%$	$15 \pm 5$	$\geq \frac{1}{2}$ of available flow rate @ applied flow pressure	as Table 9
For checking	Initial setting $\pm 10\%$	Initial setting $\pm 1$ K	Equal to hot supply pressure $\pm 10\%$	Initial setting $\pm 1$ K	Initial setting $\pm 10\%$	Initial setting $\pm 2$ K

### 6.3.3 Procedure

**6.3.3.1** Connect the mixing valve to the test rig (see Annex A).

**6.3.3.2** Set the flow rate and mixed water temperature in accordance with Table 6, with the water supply pressures and temperatures specified in that table.

For mixing valves intended for single point use, and having an integral atmospheric discharge nozzle, the flow rate may be adjusted by means of the mixing valve's integral flow control. In all cases the flow rate may be adjusted either by means of the tap 6 in the discharge pipework (where used) or a throttling device, such as an orifice plate, fitted to the atmospheric discharge.

**6.3.3.3** Having obtained the required settings, provision must be made to prevent the setting of the mixed water temperature and flow rate from being disturbed.

**6.3.3.4** Check that the timings given in A.1.2.3 are achieved and record the mixed water temperature, then start the cyclic operation of the rig.

**6.3.3.5** At intervals of  $2500 \pm 100$  cycles implement the sequence specified in A.1.2.3 (d)

**6.3.3.6** At intervals of not more than 5000 cycles check that the water supply pressures and temperatures and the mixed water flow rate are within the limits specified in Table 6 for initial setting. Re-adjust, if necessary, the water supply pressures, temperatures and the mixed water flow rate to the values specified in Table 6 for checking. The setting of the mixed water temperature control shall not be interfered with unless, after adjustment of the other parameters, the mixed water temperature is more than 1.5 K removed from the actual initial setting. Record the values of all parameters.

**6.3.3.7** On completion of  $30\,000 \pm 200$  cycles stop the test and service the mixing valve in accordance with the manufacturer's instructions. After this, subject the valve to the performance tests of clause 7.

#### **6.3.4 Requirements**

**6.3.4.1** The mixed water temperature shall remain within the limits specified in Table 6. When the operating conditions are checked and adjusted as specified in 6.3.3.6 the mixed water temperature, before any re-adjustment, shall not be more than 2 K removed from the actual initial setting.

**6.3.4.2** On completion of the durability cycling the valve shall satisfy all of the performance requirements specified in 7.

### **7. Performance**

#### **7.1 General**

Performance requirements shall be verified by means of the tests described in this Specification. The tests are laboratory type tests. The requirements shall be satisfied by each of the samples referred to in 4. The thermal performance requirements of each sample are summarised in Table 15.

*If for any reason the designed function of a TMV prevents the normal test methodology from being utilised, then the designed function must be no less effective.*

The applicable performance tests described in 7.3 to 7.12 shall be carried out in the sequence specified in 7.2 using the apparatus described in Annex B. The mixing valve shall be installed and commissioned on the test rig in accordance with the manufacturer's instructions. The applicability of some of the tests is determined by the configuration of the controls of the thermostatic mixing valve and the following exemptions apply:

- a) Mixing valves without diverter are exempt from 7.5.
- b) Mixing valves in which two applications are not served by two separately operating mechanisms sharing common supply connections are exempt from 7.6.
- c) Mixing valves with no user accessible adjustment of the mixed water temperature are exempt from 7.8.
- d) Mixing valves with single sequential control and integral atmospheric discharge are exempt from 7.12.
- e) Mixing valves having a flow rate less than 4.5 l/min when tested in accordance with 7.3 are exempt from 7.12.

Throughout the performance tests described in 7.3 to 7.12, the water supply flow pressures and water supply temperatures shall be maintained within the setting limits specified.

Additional safety features built into the design of the thermostatic mixing valves that preclude testing exactly to the requirements of the performance requirements of D 08 will not be penalised if the valve delivers water at a safe temperature as prescribed by this standard.

#### **7.2 Sequence of tests**

- a) Flow rate and sensitivity of temperature control – see 7.3.
- b) Initial setting for thermal performance tests – see 7.4.

- c) Mixed water temperature overshoot on operation of diverter (manual or automatic return) – see 7.5.
- d) Mixed water temperature overshoot on operation of second outlet – see 7.6.
- e) Mixed water temperature overshoot on starting from ambient – see 7.7.
- f) Mixed water temperature overshoot on adjustment of mixed water temperature – see 7.8.
- g) Thermal shut-off – see 7.9.
- h) Stability of mixed water temperature with changing supply pressure – see 7.10.
- i) Stability of mixed water temperature with changing supply temperature – see 7.11.
- j) Stability of mixed water temperature at reduced flow rate – see 7.12.

### 7.3 Flow rate and sensitivity of temperature control

#### 7.3.1 Purpose

The purpose of the test is:

- a) To determine the flow rate of mixed water
- b) To determine the ease with which the mixed water temperature can be adjusted to the correct value for the intended application.

If a thermostatic mixing valve is suitable for more than one application, this test can be conducted for all of these in a single test if the user adjustment range for mixed water temperature can be set to provide all of the required mixed water temperatures in one setting. Valves suitable for Tub use may need to be tested separately as larger inlets are usually provided for tub fill valves.

Thermostatic mixing valves that do not have a conventional temperature control lever for adjusting the mixed water temperature i.e. no angular or linear movement should be tested and comply with the requirements of Annex G.

**Table 7: Mixed water temperature settings for determination of flowrate and sensitivity**

Setting	Mixed water temperature °C	Comments
1	$T_a^{-3}$ $T_a^{-5}$	-
2	$T_a \pm 1$	-
3	$T_a^{+3}$ $T_a^{+5}$	-
4	lesser of $T_a^{+7}$ and $T_b^{+1}$	Only if actual setting $3 < T_b + 1$
5	$T_b^{+1}$ $T_b^{+3}$	Only if actual setting $4 < T_b + 1$
NOTE:	<p><math>T_a</math> = lowest maximum mixed water temperature specified in Table for the applications to be covered.</p> <p><math>T_b</math> = highest maximum mixed water temperature specified in Table for the applications to be covered.</p>	

### 7.3.2 Procedure

- 7.3.2.1** Connect the mixing valve to the test rig (see Annex B).
- 7.3.2.2** Fully open any integral flow control. Where outlet pipework is required, also open fully the valve 5 and the tap 6. Ensure that the bleed valves 8 are closed.
- 7.3.2.3** For mixing valves with user adjustment of the mixed water temperature, adjust the maximum mixed water temperature stop so that the full range of mixed water temperatures required in this test is available. For mixing valves with a pre-set temperature, access the mixed water temperature adjustment.
- 7.3.2.4** With the pressure losses and supply temperatures specified in Table 8 set the temperature control/adjustment to give a mixed water temperature equal to the first setting specified in Table 7.  
 Where outlet pipework is required, adjust the tap 6 to give the required pressure loss.
- 7.3.2.5** Measure and record the mixed water flow rate and temperature, and record the position of the temperature control/adjustment. Where outlet pipework is required, record the outlet pressure.
- 7.3.2.6** Set the temperature control/adjustment, maintaining the pressure loss and supply temperatures, to give each of the mixed water temperatures specified in Table 7. At each setting measure and record the mixed water flow rate and temperature, and record the position of the temperature control. Where outlet pipework is required, record the outlet pressure.

**Table 8: Flow rates**

Abbreviated designation	Hot supply		Cold supply		Required mixed water flow rate l/min
	Pressure loss Bar	Temp. °C	Pressure loss bar	Temp. °C	
-HP-B -HP-S -HP-W -HP, D44, D46 (shower)	1.0 ± 0.05	57 ± 1	1.0 ± 0.05	15 ± 1	≥ 8
Above designations with Suffix E	1.0 ± 0.05	57 ± 1	1.0 ± 0.05	15 ± 1	< 8
-HP, T44, T46 -HP, D44, D46 (bath fill)	1.0 ± 0.05	57 ± 1	1.0 ± 0.05	15 ± 1	≥ 15
-LP-B -LP-S -LP-W -LP, D44, D46 (shower)	0.2 ± 0.01	57 ± 1	0.2 ± 0.01	15 ± 1	≥ 8
Above designations with suffix E	0.2 ± 0.01	57 ± 1	0.2 ± 0.01	15 ± 1	< 8
-LP, T44, T46 -LP, D44, D46 (bath fill)		57 ± 1	0.2 ± 0.01	15 ± 1	≥ 15

### **7.3.3** *Expression of results*

Record the flow rates and the sensitivity of the temperature adjustment.

### **7.3.4** *Requirements*

**7.3.4.1** The flow rate shall at no point be less than the value specified in Table 8 for the designation of valve except that for those with suffix E the flow rate shall be less than 8 l/min.

**7.3.4.2** The sensitivity of the temperature control/adjustment shall be at least 5 degrees angular per K, or in the case of a lever at least 4mm per K.

## **7.4** **Initial settings for thermal performance tests**

### **7.4.1** *Purpose*

The purpose of the settings is to establish, at the commencement of the test sequence, a representative mixed water temperature and flow rate appropriate to the application, with the supply pressures at a mid-value in the operating range.

### **7.4.2** *Settings*

**7.4.2.1** The initial settings for each designation (see clause 8) shall be in accordance with Table 9. These settings shall not be altered or further adjusted during any thermal performance test procedure, except where specified; e.g. after initial setting the flow rate shall not be re-adjusted except in 7.12.

**7.4.2.2** For mixing valves intended for single point use, and having an integral atmospheric discharge nozzle, the flow rate shall be adjusted by means of the mixing valve's integral flow control, but if the mixing valve has a sequential control the flow rate cannot be adjusted independently of the temperature and therefore the flow rate will be that resulting at the set temperature. In all other cases the flow rate shall be adjusted by means of the tap 6 in the discharge pipework. This adjustment shall be made with any integral flow control fully open.

**7.4.2.3** For mixing valves having a user adjustable mixed water temperature, the mixed water temperature setting given in Table 9 shall be the maximum available. Having obtained the required settings, the means provided by the manufacturer for limiting the maximum mixed water temperature, locking the mixed water temperature adjustment, or otherwise rendering the adjustment tamper proof, shall be utilised. Further adjustment of the mixed water temperature during the sequence of tests for a particular designation is not allowed.

NOTE: The outlet pressure is not measured in the thermal performance tests and so the measuring line may be closed.

**Table 9: Initial settings for thermal performance tests**

Abbreviated designation	Hot supply		Cold supply		Mixed water	
	Flow pressure bar	Temp. °C	Flow pressure Bar	Temp. °C	Flow l/min	Temp. °C
-HP-B	3.0 ± 0.1	57 ± 1	3.0 ± 0.1	15 ± 1	9.0 ± 0.5	38 <sub>-2</sub> <sup>0</sup>
-HP-BE	3.0 ± 0.1	57 ± 1	3.0 ± 0.1	15 ± 1	† Q <sub>s</sub> ± 0.5	38 <sub>-2</sub> <sup>0</sup>
-LP-B	0.6 ± 0.02	57 ± 1	0.6 ± 0.02	15 ± 1	9.0 ± 0.5	38 <sub>-2</sub> <sup>0</sup>
-LP-BE	0.6 ± 0.02	57 ± 1	0.6 ± 0.02	15 ± 1	† Q <sub>s</sub> ± 0.5	38 <sub>-2</sub> <sup>0</sup>
-HP-S -HP-W	3.0 ± 0.1	57 ± 1	3.0 ± 0.1	15 ± 1	9.0 ± 0.5	41 <sub>-2</sub> <sup>0</sup>
-HP-SE -HP-WE	3.0 ± 0.1	57 ± 1	3.0 ± 0.1	15 ± 1	† Q <sub>s</sub> ± 0.5	41 <sub>-2</sub> <sup>0</sup>
-LP-S -LP-W	0.6 ± 0.02	57 ± 1	0.6 ± 0.02	15 ± 1	9.0 ± 0.5	41 <sub>-2</sub> <sup>0</sup>
-LP-SE -LP-WE	0.6 ± 0.02	57 ± 1	0.6 ± 0.02	15 ± 1	† Q <sub>s</sub> ± 0.5	41 <sub>-2</sub> <sup>0</sup>
-HP, D44, D46	3.0 ± 0.1	57 ± 1	3.0 ± 0.1	15 ± 1	See NOTE 2	
-HP-T44	3.0 ± 0.1	57 ± 1	3.0 ± 0.1	15 ± 1	20 ± 1	44 <sub>-2</sub> <sup>0</sup>
-HP-T46	3.0 ± 0.1	57 ± 1	3.0 ± 0.1	15 ± 1	20 ± 1	46 <sub>-2</sub> <sup>0</sup>
-LP, D44, D46	0.6 ± 0.02	57 ± 1	0.6 ± 0.02	15 ± 1	See NOTE 2	
-LP-T44	0.6 ± 0.02	57 ± 1	0.6 ± 0.02	15 ± 1	20 ± 1	44 <sub>-2</sub> <sup>0</sup>
-LP-T46	0.6 ± 0.02	57 ± 1	0.6 ± 0.02	15 ± 1	20 ± 1	46 <sub>-2</sub> <sup>0</sup>

† Q<sub>s</sub> = lowest flow rate recorded in 7.3.3.  
 NOTE 1: If the specified flow rate is not achievable then the available flow rate shall be used and recorded.  
 NOTE 2: For designations D44, D46 the initial settings above are those appropriate to the outlet being tested e.g. for HP-D44 use HP-T44 for the bath outlet and HP-S for the shower outlet.

**7.5 Mixed water temperature overshoot on operation of diverter (manual or automatic return)**

**7.5.1 Purpose**

The purpose of the test is to determine the characteristic of any transient rise in the mixed water temperature, which may occur when the mixed water flow is diverted from one outlet to another.

## **7.5.2 Procedure**

**7.5.2.1** Connect the mixing valve to the test rig and adjust the mixed water temperature and flow rate at each outlet to the initial setting given in Table 9 for the appropriate designation.

**7.5.2.2** Operate the diverter to the shower position; allow mixed water to flow for  $120 \pm 5$ s and then measure and record the mixed water temperature.

**7.5.2.3** Return the diverter to the bath position. Allow mixed water to flow for  $120 \pm 5$ s and then measure and record the mixed water temperature.

NOTE: It may be necessary to repeat steps 7.5.2.2, 7.5.2.3 to ensure stable operation of the valve and constant values of the bath and shower temperatures.

**7.5.2.4** By hand and as fast as possible operate the diverter to the shower position.

**7.5.2.5** Monitor and record the mixed water temperature until it has stabilised.

**7.5.2.6** In the case of diverters with automatic return close the flow control of the mixing valve. In the case of manual diverters allow the mixed water to flow for a further  $120 \pm 5$ s and then, by hand and as fast as possible operate the diverter to the bath position.

**7.5.2.7** Monitor and record the mixed water temperature until it has stabilised.

**7.5.2.8** Repeat the procedure to give 3 sets of results for each test specimen.

## **7.5.3 Expression of results**

Assess the temperature transient obtained during 7.5.2.5 and 7.5.2.7 to determine the duration at or above each 1K temperature rise shown in Table 10 for the appropriate application. Refer transient temperature rises to the mixed water temperature appropriate to the outlet.

## **7.5.4 Requirement**

**7.5.4.1** The average duration of the transient temperature rise at or above each 1K temperature rise given in Table 10 for the appropriate application, shall be not greater than the values given in Table 10. Individual test results shall not exceed the permitted duration by more than 10%.

**7.5.4.2** No steady mixed water temperature after stabilisation shall differ from the actual initial setting of the outlet concerned by more than 2K.

## **7.6 Mixed water temperature overshoot on operation of second outlet**

### **7.6.1 Principle**

The purpose of the test is to determine the characteristics of any transient mixed water temperature rise which may occur during the operation of the second outlet of a valve having two separately operating thermostatically controlled outlet mechanisms and sharing a common inlet.

### **7.6.2 Procedure**

**7.6.2.1** Connect the mixing valve to the test rig and adjust the mixed water temperature and flow rate at each outlet separately to the appropriate initial setting given for that application in Table 9. Set the lowest temperature application first and then the highest.

NOTE ensure that the other outlet is closed when setting each initial condition.

**7.6.2.2** After a stabilisation period of not less than 120s ensure that the initial conditions are still within the requirements of Table 9 for that application and record these values.

**7.6.2.3** Within 120s of recording the values in 7.6.2.2 for the highest temperature application rapidly open, by hand and as fast as possible, the outlet appropriate to the lowest temperature application whilst monitoring the mixed water temperature at both outlets.

When both mixed water temperatures have stabilised cease monitoring.

**7.6.2.4** Within 120s of the cessation of monitoring in 7.6.2.3 rapidly close, by hand and as fast as possible, the outlet appropriate to the highest temperature application whilst monitoring the mixed water temperature at the other outlet.

When the outlet temperature has stabilised cease monitoring.

**7.6.2.5** Within 120s of the cessation of monitoring in 7.6.2.4 rapidly open, by hand and as fast as possible, the outlet appropriate to the highest temperature application whilst monitoring the mixed water temperature at both outlets.

When both mixed water temperatures have stabilised cease monitoring.

**7.6.2.6** Within 120s of the cessation of monitoring in 7.6.2.5 rapidly close, by hand and as fast as possible, the outlet appropriate to the lowest temperature application whilst monitoring the mixed water temperature at the other outlet.

When the outlet temperature has stabilised cease monitoring.

**7.6.2.7** Repeat the procedure to give 3 sets of results for each test specimen.

### **7.6.3** *Expression of results*

Assess the temperature transients obtained during 7.6.2.3, 7.6.2.4, 7.6.2.5, and 7.6.2.6 to determine the duration of any temperature rise above the initial conditions recorded in 7.6.2.2 in accordance with the values shown in Table 10 for the appropriate application temperature.

### **7.6.4** *Requirement*

**7.6.4.1** The average duration of any transient temperature rise for the appropriate application shall be not greater than the values given in Table 10. Individual test results shall not exceed the permitted duration by more than 10%.

**7.6.4.2** No steady mixed water temperature after stabilisation shall differ from the actual initial setting of the outlet concerned by more than 2K.

**Table 10: Permitted duration of transient mixed water temperature rise**

Rise in mixed water temperature from actual initial setting K			Duration s	Bidet	Reference (see NOTE) °C	
Bidet Shower Washbasin	Bath fill up to 44°C	Bath fill up to 46°C			Shower Washbasin	Bath fill
+ 2	+ 4	+ 2	10 or more	40	43	48
+ 3	+ 5	+ 3	6.30	41	44	49
+ 4	+ 6	+ 4	4.00	42	45	50
+ 5	+ 7	+ 5	2.50	43	46	51
+ 6	+ 8	+ 6	1.90	44	47	52
+ 7	+ 9	+ 7	1.20	45	48	53
+ 8	+ 10	+ 8	0.75	46	49	54
+ 9	+ 11	+ 9	0.50	47	50	55
+ 10	+ 12	+ 10	0.25	48	51	56

NOTE: This temperature is the value corresponding to the permitted temperature rise above the maximum set mixed water temperature.

## 7.7 Mixed water temperature overshoot on starting from ambient

### 7.7.1 Purpose

The purpose of the test is to determine the characteristic of any transient rise in the mixed water temperature which may occur when water is drawn off after a prolonged period of non-use.

NOTE: Over a period of several hours the installed mixing valve will cool to ambient temperature. This commonly results in the thermostat adjusting the valve mechanism to fully open the hot water port, and thereby shut off the cold water port. Subsequently, as water is drawn off the thermostat must respond quickly to limit the temperature of mixed water as hot water flows into the valve.

### 7.7.2 Procedure

**7.7.2.1** Connect the mixing valve to the test rig (see Annex B).

**7.7.2.2** Starting from the initial setting (see Table 9), allow mixed water to flow for  $2 \text{ min} \pm 5 \text{ s}$  and then measure and record the mixed water temperature.

**7.7.2.3** Close off the hot and cold water supply valves and open the valve 7 in the cross-over pipe. Supply both inlets with cold water at a temperature of  $20 \pm 1 \text{ °C}$  at a total flow rate at least equal to half the set flow rate in Table 9.

**7.7.2.4** After  $5 \text{ min} \pm 15 \text{ s}$  close off the mixed water flow. In the case of mixing valves intended for single point use, and having an integral atmospheric discharge nozzle, this shall be achieved by closing the integral flow control. In all other cases close the valve 5 in the discharge pipework.

**7.7.2.5** Close the valve 7 and restore the hot and cold water supplies, opening the bleed valves 8 until the set supply temperatures are regained. Ensure that the flow pressures will be the same as before.

**7.7.2.6** For mixing valves intended for single point use, and having an integral atmospheric discharge nozzle, rapidly open, by hand and as fast as possible, the integral flow control to the same position it was in to achieve the initial setting. In all other cases rapidly open, by hand and as fast as possible, the valve 5 in the discharge pipework.

**7.7.2.7** Monitor and record the mixed water temperature.

**7.7.2.8** Repeat the procedure to give 3 sets of results for each sample.

### **7.7.3** *Expression of results*

The temperature transient obtained shall be assessed to determine the duration at or above each 1 K temperature rise shown in Table 10 for the appropriate designation. For the 3 test results on each sample calculate the average duration at each temperature rise. Transient temperature rises shall be referred to the mixed water temperature existing at the start of each of the 3 tests.

NOTE: An example of the assessment of test results is given in Annex E.

### **7.7.4** *Requirements*

**7.7.4.1** The average duration of the transient temperature rise at or above each 1 K temperature rise shown in Table 10 for the appropriate designation shall not be longer than the values in Table 10. Individual test results shall not exceed the permitted duration by more than 10%.

**7.7.4.2** For each result the final mixed water temperature shall not differ from the actual initial setting of the sample concerned by more than 2 K.

## **7.8** **Mixed water temperature overshoot on adjustment of mixed water temperature**

### **7.8.1** *Purpose*

The purpose of the test is to determine, for thermostatic mixing valves having a user adjustable mixed water temperature setting, the characteristic of any transient rise in the mixed water temperature which may occur when the mixed water temperature setting is suddenly changed from a cool setting to the maximum setting.

### **7.8.2** *Procedure*

**7.8.2.1** Connect the mixing valve to the test rig (see Annex B).

**7.8.2.2** Starting from the initial setting (see Table 9), allow mixed water to flow for 2 min  $\pm$  5 s and then measure and record the mixed water temperature.

**7.8.2.3** Adjust the position of the temperature control to give a mixed water temperature of  $30 \pm 1$  °C (or, if the lowest temperature available is greater than this, then to the lowest temperature available.)

**7.8.2.4** After 3 min  $\pm$  15 s rapidly adjust, by hand and as fast as possible, the temperature control to the maximum temperature stop.

**7.8.2.5** Monitor and record the mixed water temperature.

**7.8.2.6** Repeat the procedure to give 3 sets of results for each sample.

### **7.8.3** *Expression of results*

The temperature transient obtained shall be assessed to determine the duration at or above each 1 K temperature rise shown in Table 10 for the appropriate designation. For the 3 test

results on each sample calculate the average duration at each temperature rise. Transient temperature rises shall be referred to the mixed water temperature existing at the start of each of the 3 tests.

NOTE: An example of the assessment of test results is given in Annex E.

#### **7.8.4 Requirements**

**7.8.4.1** The average duration of the transient temperature rise at or above each 1 K temperature rise shown in Table 10 for the appropriate designation shall not be longer than the values in Table 10. Individual test results shall not exceed the permitted duration by more than 10%.

**7.8.4.2** For each result the final mixed water temperature shall not differ from the actual initial setting of the sample concerned by more than 2 K.

#### **7.9 Thermal shut-off**

##### **7.9.1 Purpose**

The purpose of the test is to determine:

**7.9.1.1** In the event of complete and sudden failure of the cold water supply:

- a) The characteristic of any transient rise in the mixed water temperature which may occur.
- b) The maximum rise in mixed water temperature resulting from prolonging the supply failure.

**7.9.1.2** In the event of complete and sudden restoration of the cold water supply following a supply failure:

- a) The characteristic of any transient rise in the mixed water temperature which may occur.
- b) The steady temperature to which the mixed water returns.

**7.9.1.3** In the event of complete and sudden failure of the hot water supply:

That the flow rate decays rapidly to an acceptable leakage rate or the rate of reduction in mixed water temperature is not excessive.

**7.9.1.4** In the event of complete and sudden restoration of the hot water supply following a supply failure:

- a) The characteristic of any transient rise in the mixed water temperature which may occur.
- b) The steady temperature to which the mixed water returns.

##### **7.9.2 Procedure**

**7.9.2.1** Connect the mixing valve to the test rig (see Annex B).

**7.9.2.2** Starting from the initial setting, isolate any branched take-offs in the cold water supply line, including the cold water pressure measuring line. Also isolate the outlet pressure measuring line, if open.

**7.9.2.3** Instantaneously isolate the cold water supply and continuously monitor the mixed water temperature.

- 7.9.2.4** Leave the cold water supply isolated for  $15 \text{ min} \pm 30 \text{ s}$  and then instantaneously restore the cold water, ensuring that the flow pressure will be the same as before. Continue to monitor the mixed water temperature.
- 7.9.2.5** Re-connect the cold water pressure measuring line and, if necessary, readjust the flow pressures. Record the mixed water temperature.
- 7.9.2.6** Isolate any branched take-offs in the hot water supply line, including the hot water pressure measuring line. Also isolate the outlet pressure measuring line, if open.
- 7.9.2.7** Instantaneously isolate the hot water supply and simultaneously commence collection of the mixed water discharge. Continuously monitor the mixed water temperature. After  $5 \pm 0.5 \text{ s}$  commence collection of the mixed water discharge in a separate vessel. The second collection period shall be for  $30 \pm 0.5 \text{ s}$ . The collected volumes may be taken as the time integrated output of a rate of flow meter provided that the response time of the meter is taken into account.
- 7.9.2.8** Leave the hot water supply isolated for  $5 \text{ min} \pm 15 \text{ s}$  and then instantaneously restore the hot water supply, ensuring that the flow pressure will be the same as before, and monitor the mixed water temperature.
- 7.9.2.9** Re-connect the hot water pressure measuring line and, if necessary, readjust the flow pressures. Record the mixed water temperature.
- 7.9.2.10** Repeat the procedure to give 3 sets of results for each sample.

### **7.9.3** *Expression of results*

- 7.9.3.1** The temperature transient obtained for each cold water isolation, for each cold water restoration, and for each hot water restoration shall be assessed to determine the duration at or above each 1 K temperature rise shown in Table 10 for the appropriate designation. For the 3 results of each of these tests calculate the average duration at each temperature rise. Transient temperature rises shall be referred to the mixed water temperature existing at the start of each of the 3 tests.

NOTE: An example of the assessment of test results is given in Annex E.

- 7.9.3.2** For the 3 test results for hot water isolation determine the average volume of water collected in the first 5s after isolation of the hot water supply and also the average volume of water collected in the subsequent 30s. Determine the minimum temperature of mixed water during the first 5s after isolation.

### **7.9.4** *Requirements*

- 7.9.4.1** For cold water isolation and restoration, and for hot water restoration the average duration of the transient temperature rise at or above each 1 K temperature rise shown in Table 10 for the appropriate designation shall not be longer than the values in Table 10. Individual test results shall not exceed the permitted duration by more than 10%. If the water discharges in a cycle i.e. increasing in flow until the valve reacts and flow stops, then each of these transient events shall for the appropriate designation comply with the requirements detailed in table 10.
- 7.9.4.2** For each result the final mixed water temperature, after restoration of the cold water supply and after restoration of the hot water supply, shall not differ from the actual initial setting of the sample concerned by more than 2 K.

**Table 11: Leakage flow of cold water**

	During first 5s after hot water isolation		During 5 to 35s after hot water isolation
Application	Reduction in mixed water temperature from actual initial setting	Discharge	Discharge
	K	litres	litres
Bidet	3	0.25	0.75
Shower Washbasin	6	0.25	0.75
Bath fill up to 44°C	9	0.5	1.5
Bath fill up to 46°C	11	0.5	1.5

**7.9.4.3** For hot water isolation:

- a) During the first 5s after hot water isolation either the average volume of water discharged shall not exceed the appropriate values given in Table 11 or, if this is exceeded, the average reduction in mixed water temperature shall not exceed the appropriate values given in Table 11. Individual test results shall not exceed the permitted volume by more than 10% or the permitted temperature reduction by more than 0.5K.
- b) During the subsequent 30s the average volume of water discharged shall not exceed the appropriate values given in Table 11. Individual test results shall not exceed the permitted volume by more than 10%.

**7.10 Temperature stability with changing water supply pressure****7.10.1 Purpose**

The purpose of the test is to determine:

- a) The change in mixed water temperature when one supply pressure is varied over the whole operating pressure range whilst the other supply pressure remains constant.
- b) The change in mixed water temperature when one supply pressure is reduced to a very low value whilst the other supply pressure remains constant.

NOTE: This represents an extreme supply starvation condition.

- c) The steady temperature to which the mixed water returns when supply pressure is restored.

**7.10.2 Procedure**

**7.10.2.1** Connect the mixing valve to the test rig (see Annex B).

**7.10.2.2** Starting from the initial setting, slowly adjust the cold water supply pressure in steps to the values shown in Table 12.

**7.10.2.3** Measure and record the mixed water temperature after each pressure change.

**7.10.2.4** With the initial setting regained, slowly adjust the hot water supply pressure in steps to the values shown in Table 12.

**7.10.2.5** Measure and record the mixed water temperature after each pressure change.

**7.10.2.6** Repeat the procedure to give 3 sets of results for each sample.

### 7.10.3 *Expression of results*

7.10.3.1 For the 3 test results calculate, for each numbered pressure change, the average change in mixed water temperature from the actual initial setting.

### 7.10.4 *Requirements*

7.10.4.1 After each change in supply pressure, the average change in mixed water temperature from the actual initial setting of the sample concerned shall not be greater than the values given in Table 12. Individual test results shall not exceed the permitted temperature change by more than 0.5 K.

**Table 12: Changes in water supply pressure and permitted temperature change**

	Supply pressure bar		Permitted change in mixed water temperature from actual initial setting K			
	All -HP	All -LP	Bidet	Shower Washbasin	Bath fill up to 44°C	Bath fill up to 46°C
First change	2 ± 0.1	0.4 ± 0.02	+2/-3	+2/-6	+2/-9	+2/-11
Second change	1 ± 0.05	0.2 ± 0.01	+2/-3	+2/-6	+2/-9	+2/-11
Third change *)	0.5 ± 0.02	0.1 ± 0.005	3	+3/-6	+3/-9	+3/-11
Fourth change initial	3 ± 0.1	0.6 ± 0.02	2	2	2	2
Fifth change	5 ± 0.2	1 ± 0.05	+2/-3	+2/-6	+2/-9	+2/-11
Sixth change initial	3 ± 0.1	0.6 ± 0.02	2	2	2	2

\*) This represents a condition outside the supply conditions for normal use.

## 7.11 **Temperature stability with changing water supply temperature**

### 7.11.1 *Purpose*

The purpose of the test is to determine:

- a) The change in mixed water temperature when one supply temperature is varied over the whole operating temperature range whilst the other supply remains constant.
- b) The steady temperature to which the mixed water returns when the supply temperature is restored.

### 7.11.2 *Procedure*

7.11.2.1 Connect the mixing valve to the test rig (see Annex B).

7.11.2.2 Starting from the initial setting, adjust the cold water supply temperature to the values given in Table 13. Dwell at each cold water temperature for more than 2 min.

7.11.2.3 Record mixed water temperature 2 min ± 5 s after each temperature change.

7.11.2.4 Starting from the initial setting, adjust the hot water supply temperature to the values given in Table 13. Dwell at each hot water temperature for more than 2 min.

7.11.2.5 Record mixed water temperature 2 min ± 5 s after each temperature change.

### 7.11.3 *Requirements*

7.11.3.1 After each change in supply temperature, the change in mixed water temperature from the actual initial setting of the sample concerned shall not be greater than the values in Table 13.

**Table 13: Changes in water supply temperature and permitted temperature change**

	Supply temperature C		Permitted temp change K
	Hot water	Cold water	
First change	Actual initial setting minus $5 \pm 1$ K	Actual initial setting minus $8 \pm 1$ K	2
Second change	Actual initial setting plus $8 \pm 1$ K	Actual initial setting plus $5 \pm 1$ K	2
Third change	Actual initial setting $\pm 1$ K	Actual initial setting $\pm 1$ K	2

**7.12 Temperature stability at reduced flow rate****7.12.1 Purpose**

The purpose of the test is to determine, for thermostatic mixing valves having a set flow rate according to Table 9 greater than the appropriate value in Table 14:

- a) The change in mixed water temperature when the flow rate is reduced to a low value with unequal supply pressures.
- b) The steady temperature to which the mixed water returns when the flow rate and supply pressures are restored.

**7.12.2 Procedure**

**7.12.2.1** Connect the mixing valve to the test rig (see Annex B).

**7.12.2.2** starting from the initial setting, reduce the cold water supply pressure to between 80 and 85% of the set flow pressure.

**7.12.2.3** Slowly reduce flow rate to the appropriate value specified in Table 14 maintaining the flow pressures. If the mixing valve incorporates an integral flow control which allows the flow rate to be adjusted independent of the temperature, then this control shall be used to reduce the flow rate. Otherwise the flow rate shall be reduced by means of the tap 6.

**7.12.2.4** Measure and record the mixed water temperature after the above procedure.

**7.12.2.5** Restore the cold water supply pressure to the initial setting and then return the flow rate to the initial set value.

**7.12.2.6** Measure and record the mixed water temperature.

**7.12.2.7** Having regained the initial setting, reduce the hot water supply pressure to between 80 and 85% of the set flow pressure.

**7.12.2.8** Slowly reduce flow rate to the appropriate value specified in Table 14 maintaining the flow pressures, and using the same control as in 7.10.2.3.

**7.12.2.9** Measure and record the mixed water temperature after the above procedure.

**7.12.2.10** Restore the hot water supply pressure to the initial setting and then return the flow rate to the initial set value.

**7.12.2.11** Measure and record the mixed water temperature.

**7.12.2.12** Repeat the procedure to give 3 sets of results for each sample.

### 7.12.3 Expression of results

- 7.12.3.1** For the 3 test results of flow reduction with hot pressure greater than cold calculate the average change in mixed water temperature from the actual initial setting.
- 7.12.3.2** For the 3 test results of flow reduction with cold pressure greater than hot calculate the average change in mixed water temperature, from the actual initial setting.

**Table 14: Reduced flow rates and permitted temperature change**

Application	Reduced flow rate l/min	Permitted temperature change K
Bidet, Shower, Washbasin	$4 \pm 0.1$	2
Bath fill	$10 \pm 0.2$	2

### 7.12.4 Requirements

- 7.12.4.1** After the reduction in flow rate, the average change in mixed water temperature from the actual initial setting of the sample concerned shall not be greater than the values given in Table 14. Individual test results shall not exceed the permitted temperature change by more than 0.5 K.
- 7.12.4.2** After restoration of the supply pressures and flow rate to the initial setting the average change in mixed water temperature from the actual initial setting of the sample concerned shall not be greater than 2 K. Individual test results shall not exceed 2.5 K.

**Table 15: Summary of thermal performance requirements for each sample**

Clause No.	Value	Run 1	Run 2	Run 3	Requirement
7.5.2.2	Shower Initial	T <sub>0</sub>	T <sub>2</sub>	T <sub>4</sub>	T <sub>0</sub> as table 9
7.5.2.3	Bath Initial	T <sub>1</sub>	T <sub>3</sub>	T <sub>5</sub>	T <sub>1</sub> as table 9
7.5.2.5	Shower Transient Shower Final	δT <sub>0</sub> T <sub>2</sub>	δT <sub>2</sub> T <sub>4</sub>	δT <sub>4</sub> T <sub>6</sub>	Av.{δT <sub>0</sub> , δT <sub>2</sub> , δT <sub>4</sub> } as table 10 T <sub>2</sub> , T <sub>4</sub> , T <sub>6</sub> each = T <sub>0</sub> ±2
7.5.2.7	Bath Transient Bath Final	δT <sub>1</sub> T <sub>3</sub>	δT <sub>3</sub> T <sub>5</sub>	δT <sub>5</sub> T <sub>7</sub>	Av.{δT <sub>1</sub> , δT <sub>3</sub> , δT <sub>5</sub> } as table 10 T <sub>3</sub> , T <sub>5</sub> , T <sub>7</sub> each = T <sub>1</sub> ±2
7.6.2.2	Lower Initial Higher Initial	T <sub>0</sub> T <sub>1</sub>	T <sub>6</sub> T <sub>7</sub>	T <sub>12</sub> T <sub>13</sub>	T <sub>0</sub> as table 9 T <sub>1</sub> as table 9
7.6.2.3	Lower Transient Higher Transient Lower Final Higher Final	δT <sub>0</sub> δT <sub>1</sub> T <sub>2</sub> T <sub>3</sub>	δT <sub>6</sub> δT <sub>7</sub> T <sub>8</sub> T <sub>9</sub>	δT <sub>12</sub> δT <sub>13</sub> T <sub>14</sub> T <sub>15</sub>	Av.{δT <sub>0</sub> , δT <sub>6</sub> , δT <sub>12</sub> } as table 10 Av.{δT <sub>1</sub> , δT <sub>7</sub> , δT <sub>13</sub> } as table 10 T <sub>2</sub> , T <sub>8</sub> , T <sub>14</sub> each = T <sub>0</sub> ±2 T <sub>3</sub> , T <sub>9</sub> , T <sub>15</sub> each = T <sub>1</sub> ±2



## 8. Designation

Thermostatic mixing valves complying with this Specification are designated by:

- a) The intended operating pressure range.
- b) The intended application.

**Table 16: Designation codes**

Code	Operating pressure range	Application
-HP-B	High pressure	Bidet
-HP-S	High pressure	Shower
-HP-W	High pressure	Washbasin
-HP-T44	High pressure	Bath with fill temperature up to 44°C
-HP-T46	High pressure	Bath with fill temperature up to 46°C
-HP-D44	High pressure	Bath (up to 44°C fill) and shower (up to 41°C)
-HP-D46	High pressure	Bath (up to 46°C fill) and shower (up to 41°C)
-LP-B	Low pressure	Bidet
-LP-S	Low pressure	Shower
-LP-W	Low pressure	Washbasin
-LP-T44	Low pressure	Bath with fill temperature up to 44°C
-LP-T46	Low pressure	Bath with fill temperature up to 46°C
-LP-D44	Low pressure	Bath (up to 44°C fill) and shower (up to 41°C)
-LP-D46	Low pressure	Bath (up to 46°C fill) and shower (up to 41°C)

The last element of the designation codes is given in Table 16. In every case this element shall be preceded by “Thermostatic mixing valve-NHS Model Specification”. Elsewhere in this Specification, for brevity, the last element only is quoted and is referred to as “Abbreviated designation”.

Where a thermostatic mixing valve is suitable for more than one application the code can include the final element of each application: e.g. “Thermostatic mixing valve- NHS Model Specification -LP-B/S/W” would be suitable for bidet, shower, or washbasin applications in the low operating pressure range.

Where, for reasons of water economy a flow rate less than 8 l/min. is required for the application, thermostatic mixing valves of -B, -S, and -W designations having a flow rate less than 8 l/min when tested according to 7.3 shall carry the designation suffix E.

## 9. Marking

Thermostatic mixing valves complying with this Specification shall be permanently and legibly marked on the product with the manufacturer’s name or identification mark and unique model reference, sufficient to enable the designation of the product to be compared with the corresponding information on any certificate of compliance with this Specification. Where the marking is applied to a detachable part of the valve e.g. a cap or index, this detachable part shall be attached to the valve by means of a fixing that requires a tool, other than a standard screwdriver, to remove the part.

NOTE: The durability of the marking should be such that it is unlikely to be removed by normal operation and maintenance. The marking should be positioned so that it can be readily identified.

The unique identification cannot be:

- Located where disconnection of the hot and cold pipework is required to verify the product by its unique identification mark.
- Located on the water supply pipe.
- Located in such a position that it requires isolation of the water supply and disassembly to verify the product by its unique identification mark.

## **10. Installation and operating instructions**

The manufacturer shall provide installation, operating and maintenance instructions. These shall include:

- a) information on the designation of the thermostatic mixing valve concerned (see 8).
- b) information on the commissioning and routine in-service tests to be performed as described in 11.
- c) information on the frequency of in-service tests and service work as described in Annex F.
- d) information on the need for any anti-backsiphonage devices (e.g. check valves) required to be installed with the mixing valve together with the specification of such devices. This specification shall be sufficient to enable the combination of mixing valve and anti-backsiphonage devices tested in accordance with this specification to be replicated on site.
- e) the need for the inclusion of any isolating valves etc. to enable on site tests to be made.
- f) details of suitable outlet fittings (e.g. draw-off taps etc.).

## **11. Commissioning and in-service tests**

### **11.1 Commissioning**

#### **11.1.1 Purpose**

During commissioning simple checks of the water supply must be undertaken to ensure that the water supply is appropriate for the installation of the thermostatic mixing valve, the water supplies must be audited, see flowchart stage 1 (see page 36). Limited performance testing is also undertaken to provide a performance reference for future in-service testing. It is assumed that the supply pipework is free from debris or detritus prior to undertaking the commissioning of the valve.

#### **11.1.2 Procedure**

##### **11.1.2.1 Check that:**

- The designation of the thermostatic mixing valve matches the intended application
- The water supply pressures and temperatures are within the range of operating pressures for the designation of the valve, see Table 1.
- The temperature differential of the thermostatic mixing valve is appropriate for the supply conditions.
- That the in-line or integral strainers/check valves are clean
- That any isolating valves are fully open.

- That the TMV installation has been set up and commissioned in compliance with the manufacturer's instructions

**11.1.2.2 Check the mixed water temperature and if necessary** adjust the temperature of the mixed water up to a maximum temperature (as indicated in table 2) in accordance with the manufacturer's instructions. Carry out the following commissioning test sequence (see flowchart stage 2, page 37):

- Record the temperature and pressure of the hot and cold water steady state supplies.
- Record the temperature of the mixed water at the maximum available flow.
- Record the temperature of the mixed water at approximately 50% of the available flow.
- Isolate the cold water supply to the mixing valve and monitor the mixed water outlet.

If there is no flow after 5 seconds then restore the cold water supply and verify that the final stabilised mixed water temperature is no more than 2°C above the temperature taken at b), and does not exceed the values in Table 17. If the final stabilised mixed water temperature is more than 2°C above the set temperature b) then the valve must be adjusted and re-commissioned.

If after 5 seconds there continues to be a flow of water from the mixed water outlet then collect any water discharging into a suitably graduated measuring vessel for 60 seconds.

The volume of water collected shall be less than 120ml.

NOTE: The supply conditions whilst undertaking this test must be within the supply conditions stated in Table 1

Restore the cold water supply and record the stabilised mixed water outlet temperature and verify that the final stabilised mixed water temperature is no more than 2°C above the set temperature b). If the final stabilised mixed water temperature is more than 2°C above the set temperature b) then the valve must be adjusted and re-commissioned.

NOTE: The final stabilised mixed water temperature must not exceed the values in Table 17.

**Table 17: Guide to maximum stabilised temperatures recorded during in service test**

Application	Mixed water temperature
	°C
Bidet	40
Shower	43
Washbasin	43
Bath (44°C fill)	46
Bath (46°C fill)	48

## 11.2 In-service test

### 11.2.1 Purpose

The purpose of in-service tests is to regularly monitor and record the thermal performance of the thermostatic mixing valve. A change in performance may indicate either a change

in the supply conditions or the need for maintenance work to be undertaken. The water supply conditions must be confirmed and compared with previous in-service test audits or commissioning test results as the supply conditions will have an impact upon the results of the test. See flowchart HTM-04 (page 38) audit of supplies to fittings stage 1.

## 11.2.2 Procedure

**11.2.2.1** Carry out the in-service test procedure using the same measuring equipment or equipment to the same specifications as that used for commissioning the valve, see flowchart field test audit stage 3 (page 38). The supply conditions whilst undertaking this test shall be within the supply conditions stated in Table 1.

- a) Record the temperature and pressure of the hot and cold water steady state supplies.
- b) Record the temperature of the mixed water at the maximum available flow.
- c) Record the temperature of the mixed water at approximately 50% of the available flow.
- d) Isolate the cold water supply to the mixing valve and monitor the mixed water outlet.

**11.2.2.2** If there is no flow after 5 seconds then restore the cold water supply and verify that the final stabilised mixed water temperature is no more than 2°C above the temperature taken at b).

If after 5 seconds there continues to be a flow of water from the mixed water outlet then collect any water discharging into a suitably graduated measuring vessel for 60 seconds.

The volume of water collected shall be less than 120ml.

**11.2.2.3** Restore the cold water supply and record the stabilised mixed water outlet temperature and verify that the final stabilised mixed water temperature is no more than 2°C above the set temperature b).

**11.2.2.4** If the mixed water temperature at b) has changed by more than  $\pm 1^\circ\text{C}$  from the previous test results, being either commissioning or in-service test results, record the change and before re-adjusting the mixed water temperature check:

- That the in-line or integral strainers/check valves are clean.
- Any in-line or integral check valves or other anti-backsiphonage devices are in good working order.
- That any isolating valves are fully open.

**11.2.2.5** Repeat the cold water isolation test

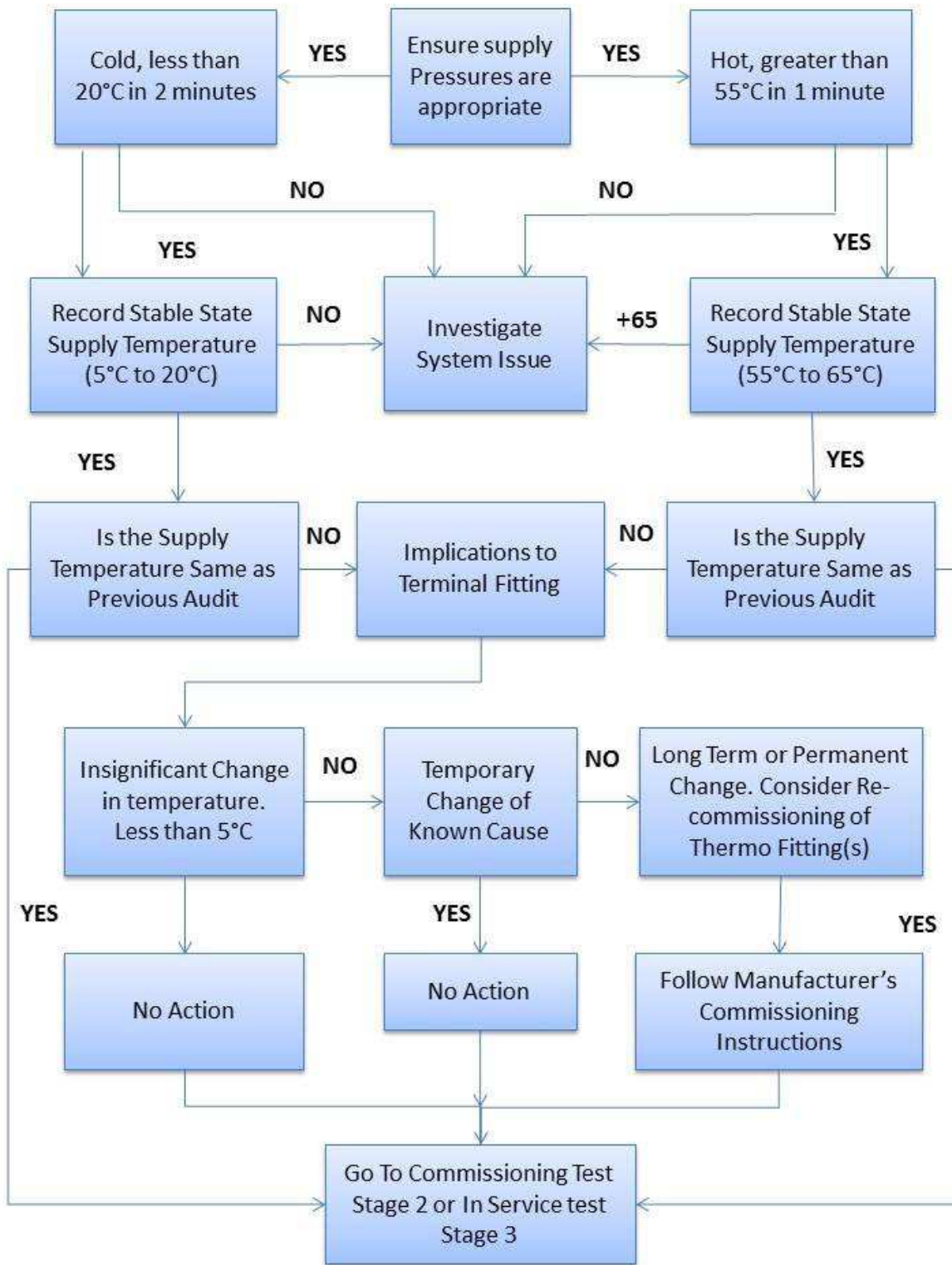
If the final mixed water temperature upon restoration is:

- Greater than the values in Table 17
- And /or the maximum temperature exceeds the corresponding value from the previous test results by more than about 2°C

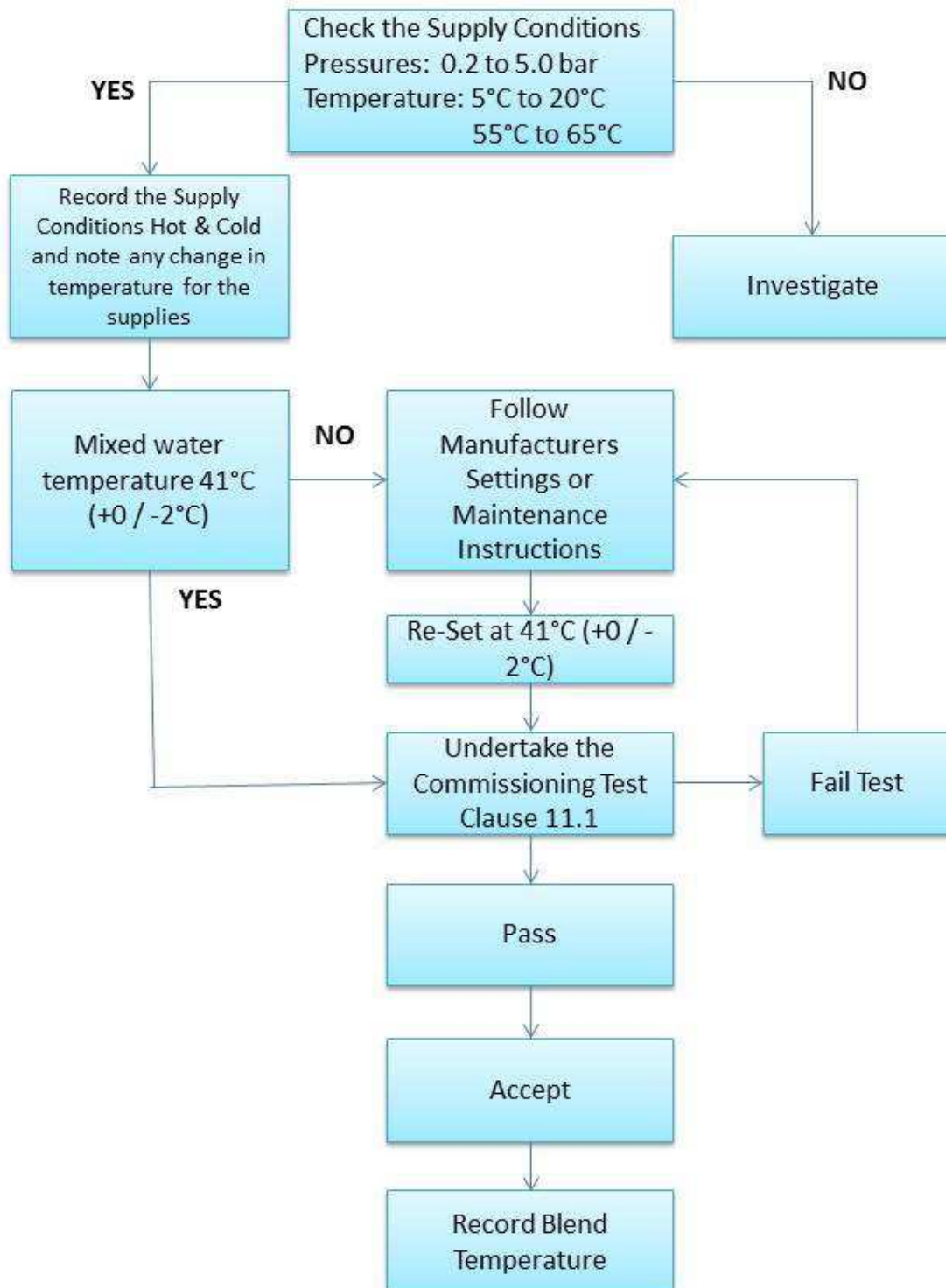
The water supply conditions must be checked, see flowchart HTM-04-01 audit of supplies to fittings stage 1 (page 38), or the need for service work is indicated. In either case the valve must be adjusted and commissioned in accordance with 11.1.

NOTE: - In-service tests should be carried out with a frequency, which identifies a need for service work before an unsafe water temperature can result. In the absence of any other instruction or guidance, the procedure described in Annex F may be used

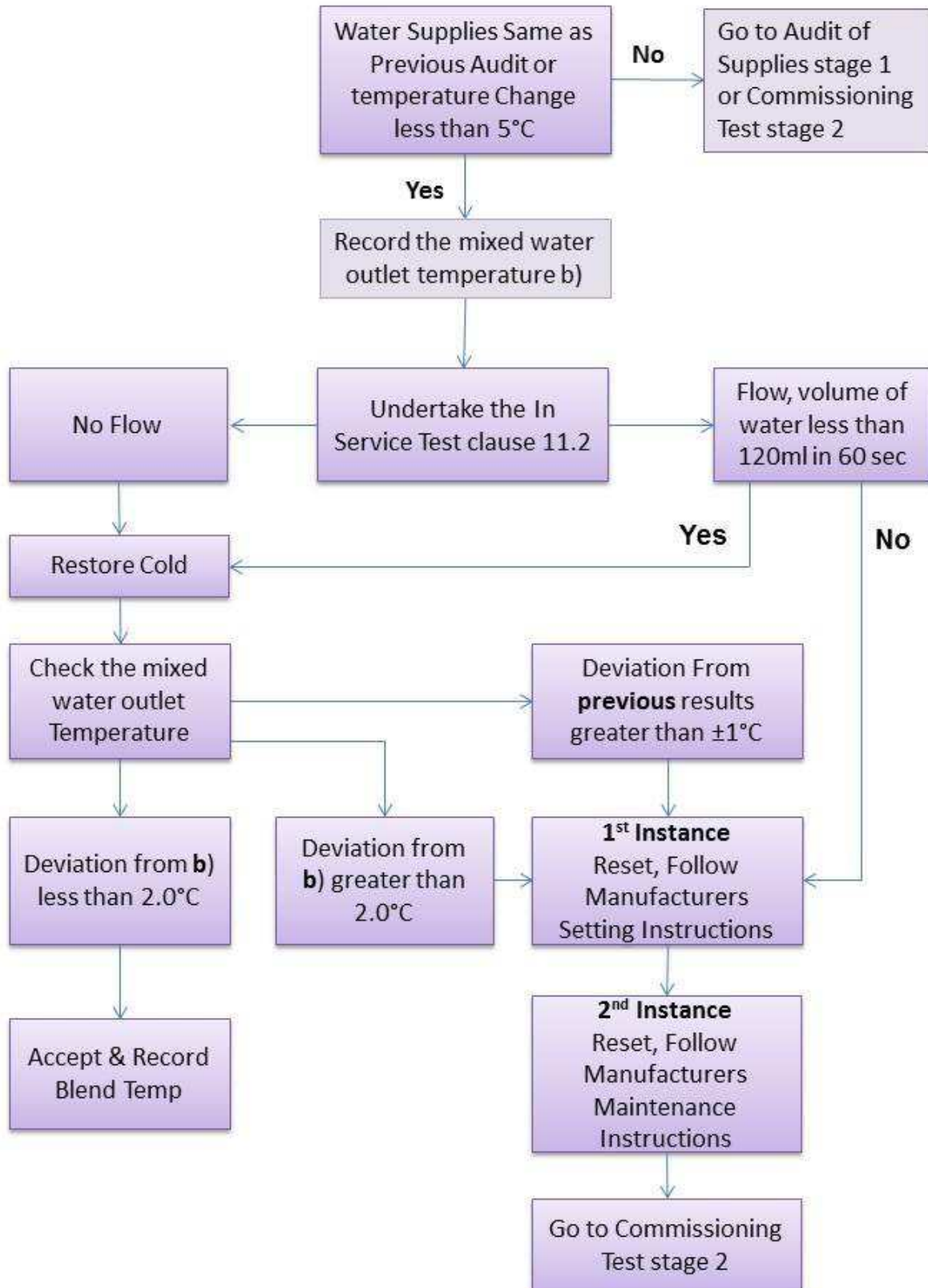
### HTM-04-01 Audit of Supplies to Fittings Stage 1



## Commissioning Test Stage 2 (example shown Washbasin Set at 41°C)



### In Service Test Stage 3



## Annex A (normative)

### Apparatus for durability test on thermostat

#### A.1 Test rig

##### A.1.1 General

The test rig shall comply with Figure A.1 in respect of dimensions, equipment and general arrangement. However, some details will need to differ in order to suit particular mixing valves and water supply facilities.

If the test rig is supplied with recycled water this shall not deteriorate in quality during the test, and shall remain free of grease, debris etc.

##### A.1.2 Description

###### A.1.2.1 Inlets

The inlet pipework shall include:

- a) a quick acting shut-off valve (7 and 8) with remote actuation, such as a solenoid valve, in each supply
- b) a flow meter ( $Q_h$  and  $Q_c$ ). Alternatively, the mixed water flow rate may be measured by determining the volume of discharge collected in a known time.
- c) provision to accommodate a temperature measuring device ( $T_h$  and  $T_c$ )
- d) a branch to an arrangement for cross-connecting the supplies
- e) a straight pipe 1, of the same nominal bore as the inlet connection of the mixing valve and of length not greater than 260 mm between the temperature measuring device and the pressure take-off tee 4
- f) a pressure take-off tee 4 complying with Figure A.2 and Table A.1 and of the same nominal size as the pipe 1
- g) a pipe 2 of the same nominal bore as the inlet connection of the mixing valve under test and of length not greater than 310 mm

NOTE: Pipe elbows and other fittings supplied with the mixing valve are considered to be part of the mixing valve, not part of the test rig.

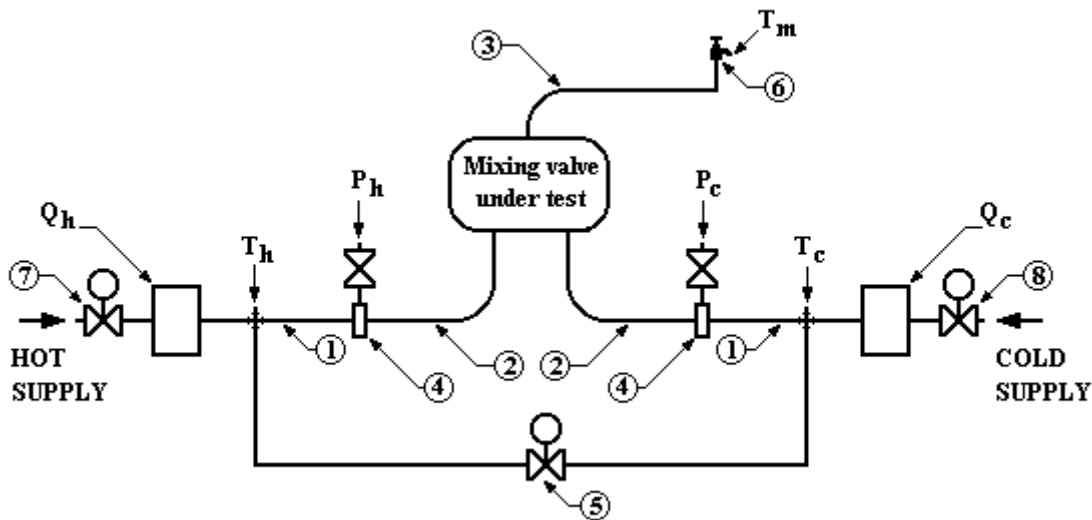
- h) an arrangement for cross-connecting the supplies through a branch containing valve 5. Valve 5 shall be of a quick acting shut-off type with remote actuation, such as a solenoid valve.
- i) lagging over the whole length of both inlet pipes between the temperature measuring device and the inlet connection of the mixing valve. This lagging shall be of mineral wool with a thickness of at least 25 mm, or of equivalent insulating value.

###### A.1.2.2 Outlet

For mixing valves which do not have an integral atmospheric discharge nozzle, outlet pipework must be fitted. This shall have a total length between the mixing valve outlet connection and the inlet of the draw-off tap not greater than 610 mm and shall include:

- a) a draw-off tap 6 of the same nominal size as the pipe 3. The discharge nozzle of this tap shall be the highest point of the outlet
- b) provision to accommodate a temperature measuring device ( $T_m$ )

NOTE: Pipe elbows and other fittings supplied with the mixing valve are considered to be part of the mixing valve, not part of the test rig.



**Figure A.1: Test rig for durability test on thermostat**

### A.1.2.3 Operating devices

The valves 5, 7, and 8 shall be operated by means of a timing device in a defined cycle:

- a) start with valves 7 and 8 open and valve 5 closed
- b)  $10 \pm 1$  s after the rate of increase in the mixed water temperature has reduced to not more than 1 K/s (see A.2.3.3) close valve 7 and open valve 5
- c)  $15 \pm 1$  s after the rate of decrease in the mixed water temperature has reduced to not more than 1 K/s (see A.2.3.3) revert to (a)
- d) at the frequency specified in 6.3.3.5, when at stage (a), 20 s after the rate of increase in the mixed water temperature has reduced to not more than 1 K/s (see A.2.3.3) close valve 8. After a further 60 s revert to (a).

## A.2 Measurement of parameters

### A.2.1 Pressure measurement

The flow pressures of the hot water supply,  $P_h$ , the cold water supply,  $P_c$ , and the mixed water,  $P_m$ , shall be measured with an accuracy of 1.0%.

### A.2.2 Flow measurement

The flow rates of hot water,  $Q_h$ , and cold water,  $Q_c$ , shall be measured with an accuracy of 2.0%. The flow rate of mixed water is the sum ( $Q_h + Q_c$ ). If the mixed water flow rate is determined by the collection method the accuracy shall be 3%.

### A.2.3 Temperature measurement

#### A.2.3.1 Mounting

The thermally sensitive part of sensing elements shall be fully immersed.

In the case of the mixed water temperature, the thermometer element shall be rigidly mounted in contact with the water outlet, and arranged so that all discharges pass over or along the full extent of the thermally sensitive part of the element. The thermally sensitive part of the element shall be located in air 30 to 50 mm from the end of the outlet.

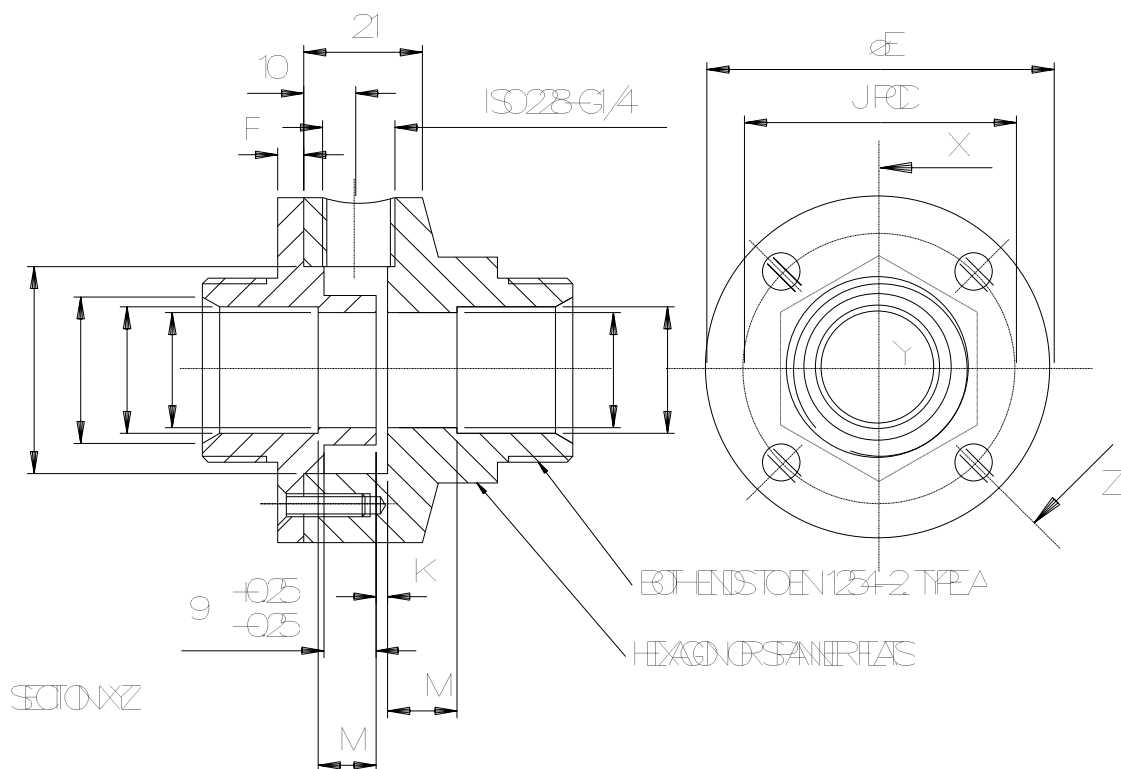
### A.2.3.2 Accuracy

The temperature of the hot water supply,  $T_h$ , the cold water supply,  $T_c$ , and the mixed water,  $T_m$ , shall be measured with an accuracy of 0.5 K.

### A.2.3.3 Rate of change

The rate of temperature change referred to in A.1.2.3 shall be determined on the basis of the temperature change in each of 2 successive periods of 0.5s.

Dimensions in millimetres



NOTE 1: Unspecified tolerance  $\pm 1$

NOTE 2: Tube ends to be square, without burrs and inserted to full depth of dimension A

**Figure A.2: Pressure take-off tee**

**Table A.1: Dimensions of pressure take-off tees**

DN	Dimensions in millimetres			
	10	15	20	25
A	10.2 ± 0.05	15.2 ± 0.05	22.25 ± 0.05	28.25 ± 0.05
B	18.5 ± 0.5	25.5 ± 0.5	35.5 ± 0.5	46.5 ± 0.5
C	9 ± 0.05	13.85 ± 0.05	20.6 ± 0.1	26.6 ± 0.1
E	42	49	59	70
F	4	4	4	4
J	30	37	47	58
K	0.5 ± 0.1	0.6 ± 0.1	0.7 ± 0.1	0.9 ± 0.1
L	13.5 ± 0.5	18.5 ± 0.5	25.5 ± 0.5	32.5 ± 0.5
M	3	5.5	9	12
Size of screws	M4×15	M4×15	M4×15	M5×15
Number of screws	4	4	4	4

**Annex B** (normative)

**Apparatus for performance tests**

**B.1 Test rig**

**B.1.1 General**

The test rig shall comply with Figure B.1 in respect of dimensions, equipment and general arrangement. However, some details will need to differ in order to suit particular mixing valves and water supply facilities.

**B.1.2 Description**

**B.1.2.1 Inlets**

The inlet pipework shall include:

- a) a quarter turn spherical plug valve in the supply pipe
- b) a flow meter ( $Q_h$  and  $Q_c$ )

NOTE 1: Invalid readings of the flow meters will result if the bleed valve(s) 8 are open.

- c) provision to accommodate a temperature measuring device ( $T_h$  and  $T_c$ )
- d) a branch to bleed valve 8
- e) a straight pipe 1, of the same nominal bore as the inlet connection of the mixing valve and of length  $250 \pm 10$  mm between the temperature measuring device and the pressure take-off tee 4
- f) a pressure take-off tee 4 complying with Figure A.2 and Table A.1 and of the same nominal size as the pipe 1
- g) a pipe 2 of the same nominal bore as the inlet connection of the mixing valve under test and of length  $300 \pm 10$  mm. Only bends of radius  $R \geq 4 \times$  the bore of the pipe are permitted in this pipe, and the bends shall not total more than  $90^\circ$

NOTE 2: Pipe elbows and other fittings supplied with the mixing valve are considered to be part of the mixing valve, not part of the test rig.

- h) an arrangement for cross-connecting the supplies through a branch containing valve 7 connected between the branches to bleed valves 8
- i) lagging over the whole length of both inlet pipes between the temperature measuring device and the inlet connection of the mixing valve. This lagging shall be of mineral wool with a thickness of at least 25 mm, or of equivalent insulating value.

### **B1.2.2 Outlet**

For mixing valves which do not have an integral atmospheric discharge nozzle, outlet pipework must be fitted. This shall have a total length between the mixing valve outlet connection and the inlet of the draw-off tap of  $600 \pm 10$  mm and shall include:

- a) a pipe 3 between the mixing valve outlet connection and the pressure take-off tee 4. This pipe shall be of the same nominal bore as the outlet connection of the mixing valve under test and of length  $300 \pm 10$  mm. Only bends of radius  $R \geq 4 \times$  the bore of the pipe are permitted in this pipe, and the bends shall not total more than  $90^\circ$

NOTE: Pipe elbows and other fittings supplied with the mixing valve are considered to be part of the mixing valve, not part of the test rig.

- b) a pressure take-off tee 4 complying with Figure A.2 and Table A.1 and of the same nominal size as the pipe 3
- c) a quarter turn spherical plug valve 5 of the same nominal size as the pipe 3
- d) a draw-off tap 6 of the same nominal size as the pipe 3. The discharge nozzle of this tap shall be the highest point of the outlet
- e) provision to accommodate a temperature measuring device ( $T_m$ )

## **B.2 Measurement of parameters**

### **B.2.1 Pressure measurement**

The flow pressures of the hot water supply,  $P_h$ , the cold water supply,  $P_c$ , and the mixed water,  $P_m$ , shall be measured with an accuracy of 1.0%. The datum for pressure measurement shall be taken at the lowest point of the atmospheric end of the discharge nozzle of the tap 6, or the nozzle of the integral discharge spout etc.

### **B.2.2 Flow measurement**

The flow rates of hot water,  $Q_h$ , and cold water,  $Q_c$ , shall be measured with an accuracy of 2.0%. The flow rate of mixed water is the sum ( $Q_h + Q_c$ ).

### **B.2.3 Temperature measurement**

#### **B.2.3.1 Mounting**

The thermally sensitive part of sensing elements shall be fully immersed.

In the case of the mixed water temperature, the thermometer element shall be rigidly mounted in contact with the water outlet, and arranged so that all discharges pass over or along the full extent of the thermally sensitive part of the element. The thermally sensitive part of the element shall be located in air 30 to 50 mm from the end of the outlet.

### B.2.3.2 Accuracy

The temperature of the hot water supply,  $T_h$ , the cold water supply,  $T_c$ , and the mixed water,  $T_m$ , shall be measured with an accuracy of 0.2 K.

### B.2.3.3 Response time

The mixed water temperature shall be measured with instrumentation having a total system response such that a change in reading equal to 90% of a step change is indicated in a time of  $0.3 \pm 0.05$  s. This response time shall be verified by means of the procedure specified in Annex C.

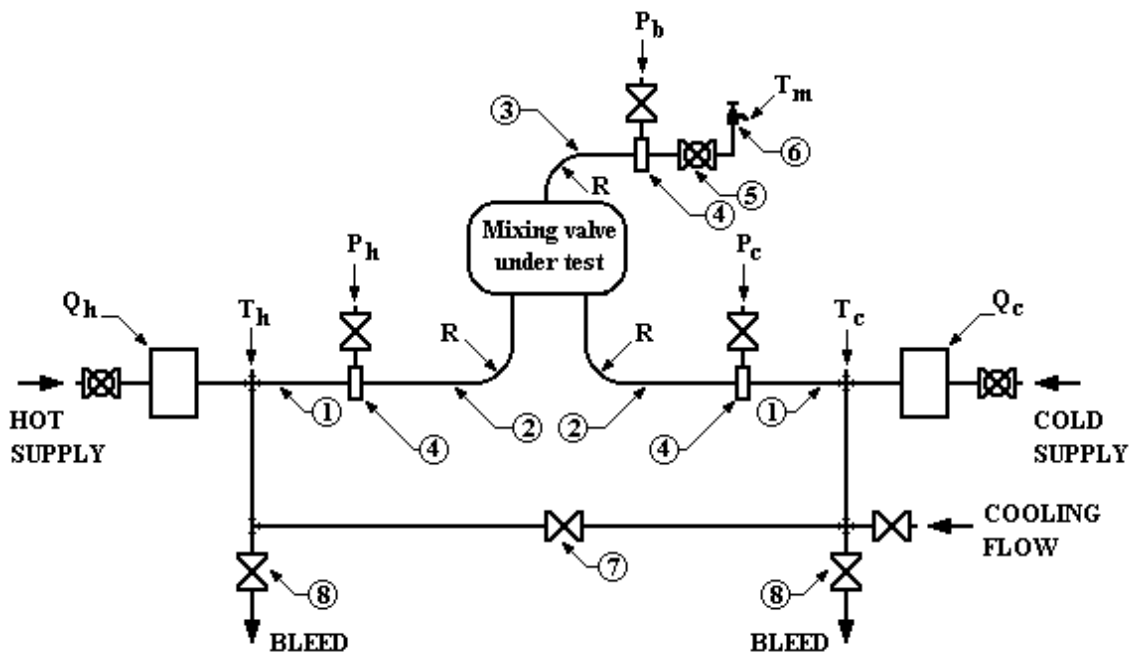


Figure B.1: Test rig for performance tests

### B.2.4 Angular position

The angular position of the temperature control shall be measured with an accuracy of  $0.5^\circ$  angular. Linear movement shall be measured with an accuracy of 0.5 mm.

### B.2.5 Duration of transients

Transient events shall be timed to an accuracy of 0.1s.

## Annex C (normative)

### Determination of thermometer response time

#### C.1 Purpose

The purpose is to determine the response time of the complete water temperature measuring system specified in Annex B for the mixed water temperature. This consists of, for example, a sensor (thermometer element or thermocouple) together with all associated equipment necessary to obtain a reading of Celsius temperature.

## C.2 Method

The method specified involves plunging the sensor from air at ambient temperature into flowing water at a higher temperature and measuring the time taken for the reading of Celsius temperature to rise by 90% of the difference between the air and water temperatures.

NOTE: The method specified is appropriate to the measurements of transient temperatures required by this specification and should provide repeatable results. However, the method should not be regarded as capable of measuring the absolute response time. To do this additional test equipment is needed.

## C.3 Apparatus

### C.3.1 Water system

A water supply is required which can be adjusted both for temperature and flow rate and which is discharged through a pipe or nozzle into the atmosphere. The minimum dimension A of the water stream discharged into air shall not be less than  $5 \times D$ , where

A = smallest cross-section dimension of the water stream in air between the end of the pipe or nozzle and 100 mm from the end of the pipe or nozzle when the flow velocity in the pipe or nozzle is  $1 \pm 0.1$  m/s,

D = the largest cross-section dimension of the immersed part of the thermometer element or sensor.

NOTE: In general the cross-section dimensions of the water stream are approximately equal to the cross-section dimensions of the pipe or nozzle.

### C.3.2 Measuring equipment

The measuring equipment shall be the same as that used for the tests in 7. To enable the response time to be determined there shall be provision for synchronising the plunging of the sensor into water with the commencement of the time interval measurement.

NOTE 1: Where a data logging system is used the measured response time will frequently be over-estimated, but never under-estimated. Although a scan interval of 0.2s is sufficiently fast to achieve the required accuracy of timing in B.2.5, for the determination of thermometer response time this scan interval can over-estimate the response time by more than 10% in the range of permitted response times. A scan interval of 0.1s should not over-estimate by more than 0.01s and the possible error is reduced by more rapid scanning.

NOTE 2: It may be sufficient to manually co-ordinate the plunging of the sensor into water and the commencement of timing. However, practice is necessary to achieve repeatable results.

## C.4 Procedure

**C.4.1** In the pipe or nozzle establish a flow of water having a velocity of  $1 \pm 0.1$  m/s. The dimensions of the water stream discharging into the atmosphere shall have the dimensions specified in C.3.1.

**C.4.2** Measure the air temperature  $T_a$  close to the water stream. The air temperature shall be constant  $\pm 0.2$  K.

NOTE: To achieve the required constancy of air temperature a draught protected environment may be needed.

- C.4.3** Adjust the temperature of the water stream in air  $T_w$  such that  $(T_w - T_a) = 20 \pm 2$  K. The water stream temperature shall be constant  $\pm 0.2$  K and the velocity in the pipe or nozzle shall remain at  $1 \pm 0.1$  m/s.
- C.4.4** With the test sensor in air close to the water stream record the temperature which it indicates in association with its connected equipment (transmitter, amplifier, data logger, pen recorder etc.). Then simultaneously plunge the sensor into the water stream and commence timing. The attitude of the sensor within the water stream shall be oblique to the flow with the tip of the sensor not more than 100 mm from the end of the pipe or nozzle and with the whole of the sensitive part of the sensor immersed. The temperature indicated by the test sensor and its associated equipment shall be monitored until the indication is constant  $\pm 0.2$  K.
- C.4.5** From a graph of the indicated temperature versus time determine the response time  $\tau_{90}$  as the time taken to reach 90% of the indicated difference  $(T_w - T_a)$ .
- C.4.6** Repeat the procedure C.4.3 to C.4.5 to give at least 5 consecutive measurements of  $\tau_{90}$  which are constant to within 10% of their average value.

NOTE: With the exception of synchronisation (co-ordination) errors, the errors inherent in the procedure should tend to result in a larger value of response time than the absolute value. For this reason greater confidence may be placed in the smallest values measured, unless they are likely to be the result of synchronisation error.

## C.5 Results

The response time  $\tau_{90}$  shall be taken as the average of the 3 smallest values of at least 5 consecutive measurements of  $\tau_{90}$  which are constant to within 10% of their average value.

## Annex D (normative)

### D.1 Testing of further samples

In the event that no more than one of the three samples initially selected should fail to satisfy the requirements of the performance tests for a specific designation by margins no greater than specified in Table D.1, a further two samples may be selected, using the same random selection procedure. If the failed valve had been subjected to the durability of thermostat test specified in 6.3 then one of the two additional samples shall also be subjected to this test. If the two additional samples satisfy all of the requirements for that failed designation then the product will be deemed to comply with this Specification.

**Table D.1: Maximum margins of failure**

Requirement	Margin of failure
7.5.4.1; 7.6.4.1; 7.7.4.1; 7.8.4.1; 7.9.4.1	+ 10 % on average duration of transient temperature rises.
7.5.4.2; 7.6.4.2; 7.7.4.2; 7.8.4.2; 7.9.4.2; 7.12.4.2	0.3 K on each steady mixed water temperature after restoration of initial supply conditions.
7.9.4.3	+ 10 % on average leakage volume; 0.5 K on average reduction in mixed water temperature.
7.10.4.1; 7.11.3.1; 7.12.4.1;	0.5 K on average change in mixed water temperature.

## Annex E (informative)

### E.1 Assessment of transient values

An example of a transient temperature variation is shown in Figure E.1. The following information is taken from the graph:

- a) The duration at or above 45°C = 2.9 - 0.5 = 2.4s
- b) The duration at or above 46°C = 2.5 - 0.53 = 1.97s
- c) The duration at or above 47°C = 2.25 - 0.57 = 1.68s
- d) The duration at or above 48°C = 1.99 - 0.6 = 1.39s
- e) The duration at or above 49°C = 1.73 - 0.7 = 1.03s
- f) The duration at or above 50°C = 1.52 - 0.7 = 0.82s
- g) The duration at or above 51°C = 1.35 - 0.75 = 0.5s
- h) The duration at or above 52°C = 1.13 - 0.8 = 0.33s
- i) The duration at or above 53°C = < 0.25s

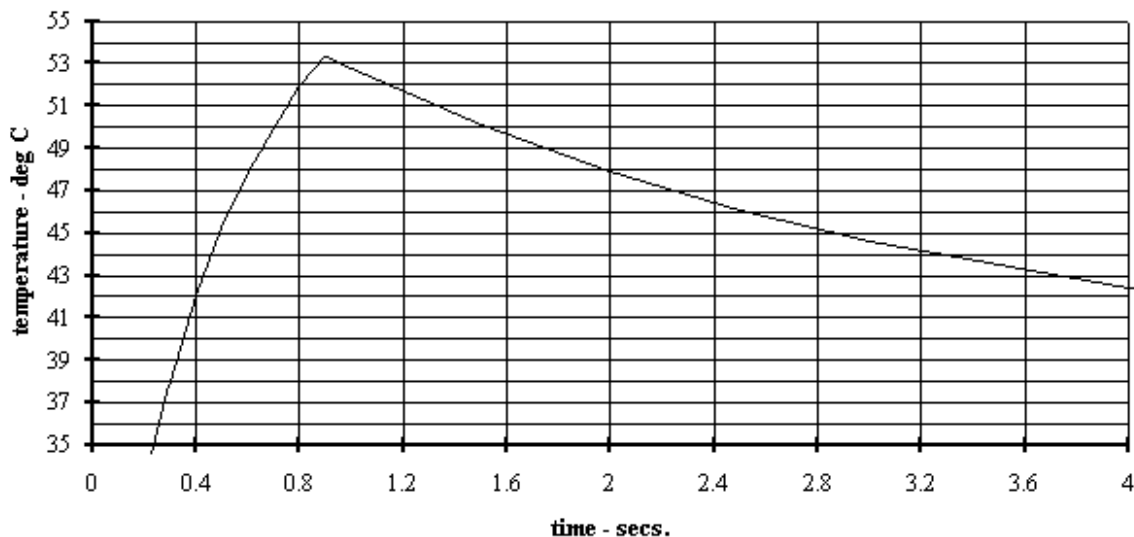


Figure E.1: Example of transient temperature variation

## Annex F (informative)

### Frequency of in-service tests

#### F.1 General

In the absence of any other instruction or guidance on the means of determining the appropriate frequency of in-service testing, the following procedure may be used.

Changes to the mixed water outlet temperature may be attributed to a change in the supply conditions from those experienced at the time of the previous audit(s). The water supplies must be audited see flowchart stage 1 (page 36) to ascertain where remedial action is required i.e. supplies or valve.

**F.1.1** 6 to 8 weeks after commissioning, carry out the test given in 11.2.2.

**F.1.2** 12 to 15 weeks after commissioning, carry out the test given in 11.2.2.

**F.1.3** Depending on the results of F.1.1 and F.1.2 several possibilities exist:

- a) If no significant changes (e.g.  $\leq 1$  K) in mixed water temperatures are recorded between commissioning and F.1.1, or between commissioning and F.1.2 the next in-service test can be deferred to 24 to 28 weeks after commissioning.
- b) If small changes (e.g. 1 to 2 K) in mixed water temperatures are recorded in only one of these periods, necessitating adjustment of the mixed water temperature, then the next in-service test can be deferred to 24 to 28 weeks after commissioning.
- c) If small changes (e.g. 1 to 2 K) in mixed water temperatures are recorded in both of these periods, necessitating adjustment of the mixed water temperature, then the next in-service test should be carried out at 18 to 21 weeks after commissioning.
- d) If significant changes (e.g.  $> 2$  K) in mixed water temperatures are recorded in either of these periods, necessitating service work, then the next in-service test should be carried out at 18 to 21 weeks after commissioning.

**F.1.4** The general principle to be observed after the first 2 or 3 in-service tests is that the intervals of future tests should be set to those which previous tests have shown can be achieved with no more than a small change in mixed water temperature.

## **Annex G** (normative)

### **G.1. General.**

G1.1 This Annex details alternative tests for mixing valves that do not have a conventional temperature control lever for adjusting the mixed water temperature. All other test requirements for such products are the same as those specified in the main text of this Standard.

G.1.2 The two categories of electronic temperature adjustment covered by this Annex are,

- **Category A valves:** Where the mixed water temperature controller produces progressive temperature increase/decrease for the time it is activated.
- **Category B valves:** Where the mixed water temperature controller produces a predetermined step temperature increase/decrease for each time it is activated.

The indication of temperature adjustment will normally be visual but audible/vibratory indications are acceptable.

### **G.2. Flowrate and Sensitivity of temperature control, alternative to angular or linear movement.**

#### **G2.1. Purpose**

The purpose of the test is:

To determine the flowrate of the mixed water. To determine the ease with which the mixed water temperature can be adjusted to the correct value for the intended application. To ensure that the electronic temperature control is not operated inadvertently. To enable the user to be aware of what the mixed water temperature is doing when making adjustments.

If a thermostatic mixing valve is suitable for more than one designation, this test can be conducted for all of these in a single test if the user adjustment range for mixed water temperature can be set to provide all of the required mixed water temperatures in one setting.

## **G.2.2 Procedure**

**G.2.2.1.** Connect the mixing valve to the test rig (see Annex B).

**G.2.2.2.** Fully open any integral flow control. Where outlet pipework is required, also open fully the valve 5 and the tap 6. Ensure that the bleed valves 8 are closed.

**G.2.2.3.** For mixing valves with user adjustment of the mixed water temperature, adjust the maximum mixed water temperature stop so that the full range of mixed water temperatures required in this test is available. For mixing valves with a pre-set temperature, access the mixed water temperature adjustment.

**G.2.2.4.** With the pressure losses and supply temperatures specified in Table 8 set the temperature control/adjustment to give a mixed water temperature equal to the first setting specified in Table 7.

Where outlet pipe work is required, adjust the tap 6 to give the required pressure loss.

**G.2.2.5.** Record the mixed water flowrate and temperature, and record the position of the temperature control/adjustment. Where outlet pipe work is required, record the outlet pressure.

**G.2.2.6.** For **category A** valves as specified above, activate the temperature controller until the mixed water temperature reaches the values equivalent to settings 2, 3, 4 or 5 in Table 7 as determined by the designation of the mixing valve.

At each setting, record the mixed water flow rate, the temperature and the time to reach each setting. Alternatively the total time taken for the temperature to move from first to the last setting can be measured and used to calculate the average time taken per position.

For **category B** valves as specified above, set the temperature control/adjustment to give a mixed water temperature equal to the first setting in Table 7. Activate the temperature controller one increment and measure the incremental change in the mixed water temperature. Continue to activate the temperature controller in single incremental steps measuring flow rate and mixed water temperature change at each setting, until the range determined by settings 1-5 in Table 7 and the designation of the mixing valve has been covered.

Where outlet pipework is required, record the outlet pressure.

For category A and B valves measure from the sensor the maximum distance required to activate the temperature adjustment as appropriate.

## **G.2.3. Expression of results**

Record the flow rates.

For category A valves, record the flow rate at each of the mixed water temperature settings determined by Table 7. Record the time taken to increase the mixed water temperature from the value equivalent to setting 1 to settings 2, 3, 4 or 5 in Table 7, as determined by the designation of the mixing valve. Alternatively the total time taken for the temperature to

move from the first to the last setting can be measured so that an average time per setting can be calculated.

For category B valves, record the temperature change for each incremental adjustment required to increase the mixed water temperature from the value equivalent to setting 1 to setting 2,3, 4 or 5 in Table 7, as determined by the designation of the mixing valve.

#### **G.2.4. Requirements**

For category A valves, the temperature/time increase characteristic specified in Table 7 shall be a maximum of 1°C per second throughout the temperature range.

For category B valves, each step change in temperature shall be 1°C maximum.

The flow rate shall at no point be less than the value specified in Table 8 for the designation of valve except that for those with suffix E the flow rate shall be less than 8l/min.

The maximum distance for activation of the electronic temperature controller shall be 50mm.

A visual/audible/vibratory indication built into the product is required to inform the user whether the temperature is rising or falling when they are adjusting the mixed water temperature as well as indicating its maximum and minimum temperature positions.

### **G.3. Mixed water temperature overshoot on adjustment of mixed water temperature**

#### **G.3.1. Purpose**

The purpose of the test is to determine, for thermostatic mixing valves having a user adjustable mixed water temperature setting, the characteristic of any transient rise in the mixed water temperature which may occur when the mixed water temperature setting is suddenly changed from a cool setting to the maximum setting.

#### **G.3.2. Procedure**

**G.3.2.1.** Connect the mixing valve to the test rig (see Annex B).

**G.3.2.2.** Starting from the initial setting (see Table 9), allow mixed water to flow for 2 min  $\pm$  5 s and then measure and record the mixed water temperature.

**G.3.2.3.** Adjust the position of the temperature control to give a mixed water temperature of 30 $\pm$  1°C. (Or, if the lowest temperature available is greater than this, then to the lowest temperature available.)

**G.3.2.4.** After 3 min  $\pm$  15 s rapidly adjust, by hand and as fast as possible, the temperature of the mixed water. For category A valves this shall be done by activating the temperature controller until the mixed water temperature reaches its maximum position. For category B valves this is done by activating the temperature controller as quickly and as many times as is necessary for the mixed water temperature to reach its maximum position.

**G.3.2.5.** Monitor and record the mixed water temperature.

**G.3.2.6.** Repeat the procedure to give 3 sets of results for each sample.

#### **G.3.3. Expression of results**

The temperature transient obtained shall be assessed to determine the duration at or above each 1 K temperature rise shown in Table 10 for the appropriate designation. For the 3 test results on each sample calculate the average duration at each temperature rise. Transient

temperature rises shall be referred to the mixed water temperature existing at the start of each of the 3 tests.

NOTE: An example of the assessment of test results is given in Annex E.

#### **G.3.4.Requirements**

The average duration of the transient temperature rise at or above each 1 K temperature rise shown in Table 10 for the appropriate designation shall not be longer than the values in Table 10. Individual test results shall not exceed the permitted duration by more than 10%.

For each result the final mixed water temperature shall not differ from the actual initial setting of the sample concerned by more than 2 K.



Thorne & Derrick  
+44 (0) 191 490 1547  
[www.heatingandprocess.com](http://www.heatingandprocess.com)