

SXCS Stainless Steel Control Stations



IP66

Application

Industrial and Hazardous areas

Protection Degree

IP66

Certification

ATEX, IECEx & InMetro

Ex e II T4 or Ex ed IIC T4

Max ambient range: -20°C to +55°C

Material

Stainless Steel 316L (1.4404)



Configuration options (see typical layout drawings overleaf)

Part Number	Dimensions (mm)	Max. Power Dissipation (W)	Maximum Populations		
			Operators Only	Ammeters Only	Operators & Ammeters
SXCS66	152x152x102	4	1 x Op	N/A	N/A
SXCS0	152x229x140	5.5	2 x Op	N/A	N/A
SXCS0.5	184x274x140	6	3 x Op	2 x Am	1 x Op, 1 x Am
SXCS1	234x324x140	8	8 x Op**	2 x Am	2 x Op, 2 x Am
SXCS1.5	306x306x140	9	9 x Op**	4 x Am	6 x Op, 2 x Am
SXCS2	372x324x140	10	9 x Op	4 x Am	6 x Op, 2 x Am
SXCS3	372x448x140	12	12 x Op**	12 x Am	6 x Op, 2 x Am
SXCS4	372x510x140	12.5	Details available upon request		
SXCS5	510x510x140	14			
SXCS6	510x780x140	16			
SXCS7	650x950x140	19.5			
SXCS8	800x1250x140	34			

Op = Operator (Push Button, E-Stop, Indicator Lamp or Selector Switch) - Allow 1W power dissipation per operator

Am = Ammeter - Allow 0.5W power dissipation per ammeter

** When fitted with maximum number of operators, NO additional terminals may be fitted due to max. power dissipation limit

Available operator, ammeter and terminal types (see parts list overleaf)

Push Button	Momentary, 1NC/1NO, 2NC or 2NO contacts. Coloured/marked inserts as required
Emergency Stop	Push-Pull, 1NC/1NO, 2NC or 2NO contacts. Red/yellow mushroom head
Mushroom Head	Push-Pull, 1NC/1NO, 2NC or 2NO contacts. Colour: black. Optional key release
Key Release Push Button	1NC/1NO, 2NC or 2NO contacts. Colour: black
Indicator Lamp	Red/green/yellow/blue or white available
Illuminated Push Button	Red/green/yellow/blue or white available. Available with 1NC or 1NO contacts
Selector Switch	2 or 3 position. 2-pole contact configurations and label inserts to suit application Small switch handle (39mm dia) as standard. Large handle (60mm dia) also available
Ammeter	Direct measuring with x2 overload scale (max scale: 0-15A/30A) 1A or 5A current transformer with x2 or x5 overload scale (max scale: 0-600A/3000A)
Terminals	Direct termination as standard, 2.5/4mm ² Ex screw terminals fitted where requested



THORNE & DERRICK
INTERNATIONAL

Thorne & Derrick
+44 (0) 191 410 4292
www.heatingandprocess.com

Maximum cable entries

	Top face c/w removable gland plate				Bottom face c/w removable gland plate			
	M20	M25	M32	M40	M20	M25	M32	M40
SXCS66	8	6	3	2	8	6	3	2
SXCS0	2	1	1	1	2	1	1	1
SXCS0.5	4	2	2	1	4	2	2	1
SXCS1	6	3	2	2	6	3	2	2
SXCS1.5	10	5	4	3	10	5	4	3
SXCS2	14	6	5	4	14	6	5	4
SXCS3	12	7	5	4	12	7	5	4
SXCS4	14	6	5	4	14	6	5	4
SXCS5	20	10	7	6	20	10	7	6
SXCS6	20	10	7	6	20	10	7	6
SXCS7	28	14	10	8	28	14	10	8
SXCS8	36	18	12	10	36	18	12	10

Ordering information

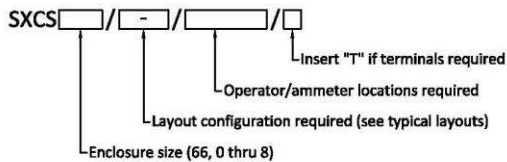
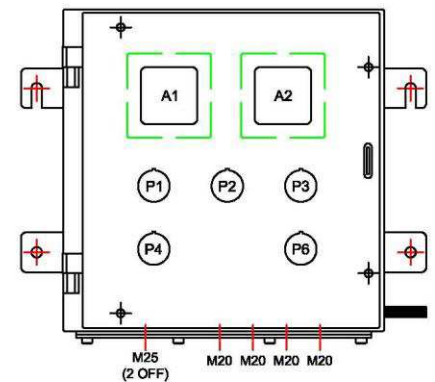
Example Order Code:

SXCS(1.5)/(6-2)/(P1P2P3P4P6A1A2)/II

P1 = P1 71 03 P6 = K4 70 03
P2 = P3 70 A1 = M7WA 25 / 5-2
P3 = K8 70 05 A2 = M7WA 50 / 5-2
P4 = P1 71 23 T = 32 x SAK 2.5 Ex
ENTRIES = 2 x 25.5mm, 4 x 20.5mm bottom side

SXCS1.5 control station (306x306x140mm), fitted with:

- 1 off Momentary pushbutton, 2NC contacts, green "ON" label insert
- 1 off Push-Pull mushroom head emergency stop, 1NC/1NO contacts
- 1 off 3-position selector switch, "0 · I" label insert
- 1 off Momentary pushbutton, 2NC contacts, red "OFF" label insert
- 1 off 3-position selector switch, "0 I II" label insert
- 1 off 5A ammeter for connection to CT, 0-25A measuring scale with x2 overload scale (50A)
- 1 off 5A ammeter for connection to CT, 0-50A measuring scale with x2 overload scale (50A)
- 32 off SAK 2.5 Ex terminals rail mounted
- 2 off 25.5mm & 4 off 20.5mm entries in gland plate on bottom side of enclosure



Electrical data

Push Button Emergency Stop Mushroom Head Key Release Push Button	Utilization category (per BS EN 60947-1)	AC12	AC15	DC13	DC13
	Rated voltage	250V	250V	110V	24V
	Rated current	16A	10A	0.5A	1A
	Maximum ambient temperature	+40°C	+55°C	+55°C	+55°C
Indicator Lamp	Suitable for 24-240Vac / 24-36Vdc supply. Alternative supply option: 220-380Vac				
Illuminated Push Button	Utilization category (per BS EN 60947-1)	AC15		DC13	
	Rated voltage	250V		24V	
	Rated current	6A		1A	
	Maximum ambient temperature	+55°C		+55°C	
Terminals	Lamp suitable for 24-240Vac / 24-36Vdc supply				
	Terminal type	AKZ 2.5	AKZ 4	SAK 2.5	SAK 4
	Maximum cable size	2.5mm ²	4mm ²	2.5mm ²	4mm ²
	Maximum voltage	176V	275V	550V	550V
	Maximum current	15A*	28A	15A*	28A

*limited as per hazardous area certificate

OPERATORS ONLY		AMMETERS ONLY	
 <p data-bbox="245 488 403 521">SXCS66/1-0</p>	<p data-bbox="544 297 564 443" style="writing-mode: vertical-rl; transform: rotate(180deg);">ABT24575 rev A</p>		
 <p data-bbox="256 797 395 831">SXCS0/2-0</p>			
 <p data-bbox="245 1106 403 1140">SXCS0.5/3-0</p>	<p data-bbox="544 909 564 1055" style="writing-mode: vertical-rl; transform: rotate(180deg);">ABT24577 rev A</p>	 <p data-bbox="644 1106 898 1140">SXCS0.5/0-2/*****</p>	 <p data-bbox="1139 1106 1297 1140">SXCS0.5/1-1</p>
 <p data-bbox="209 1415 440 1449">SXCS1/8-0/*****</p>	<p data-bbox="544 1218 564 1364" style="writing-mode: vertical-rl; transform: rotate(180deg);">ABT24580 rev A</p>	 <p data-bbox="703 1415 839 1449">SXCS1/0-2</p>	 <p data-bbox="1102 1415 1334 1449">SXCS1/2-2/*****</p>
 <p data-bbox="197 1724 451 1758">SXCS1.5/9-0/*****</p>	<p data-bbox="544 1527 564 1673" style="writing-mode: vertical-rl; transform: rotate(180deg);">ABT24583 rev A</p>	 <p data-bbox="644 1724 898 1758">SXCS1.5/0-4/*****</p>	 <p data-bbox="1091 1724 1345 1758">SXCS1.5/6-2/*****</p>
 <p data-bbox="201 2033 448 2067">SXCS3/12-0/*****</p>	<p data-bbox="544 1836 564 1982" style="writing-mode: vertical-rl; transform: rotate(180deg);">ABT24586 rev A</p>	 <p data-bbox="647 2033 895 2067">SXCS3/0-12/*****</p>	 <p data-bbox="1102 2033 1334 2067">SXCS3/6-6/*****</p>

