

BusBar Box



THORNE &
DERRICK
INTERNATIONAL

Thorne & Derrick
+44 (0) 191 410 4292
www.heatingandprocess.com

11kV

This 11kV busbar enclosure is designed to safely carry high voltage supplies with extreme current loadings in Zone 1 hazardous areas. Suitable for connectors over 400mm², the enclosure is capable of connecting three phases plus neutral and up to six conductors per phase. The busbar box is certified for ATEX, IECEx and InMetro applications.



- 3200A per phase
- Fault rated 90kA for 1 second
- DTS-01 deluge tested enclosure
- Heavy duty machined hinges with lift off cover pad-lockable cover

Enclosure Ratings

Product Reference*	Width (mm)	Depth (mm)	Height (mm)	Max Voltage (kV)	Maximum Current (A)	Maximum Ways	Max No. Conductors per Way	Appox Weight (kg)
BBB(x-x)	770 - 1250	770	675 - 1250	11	3000	4	6	255

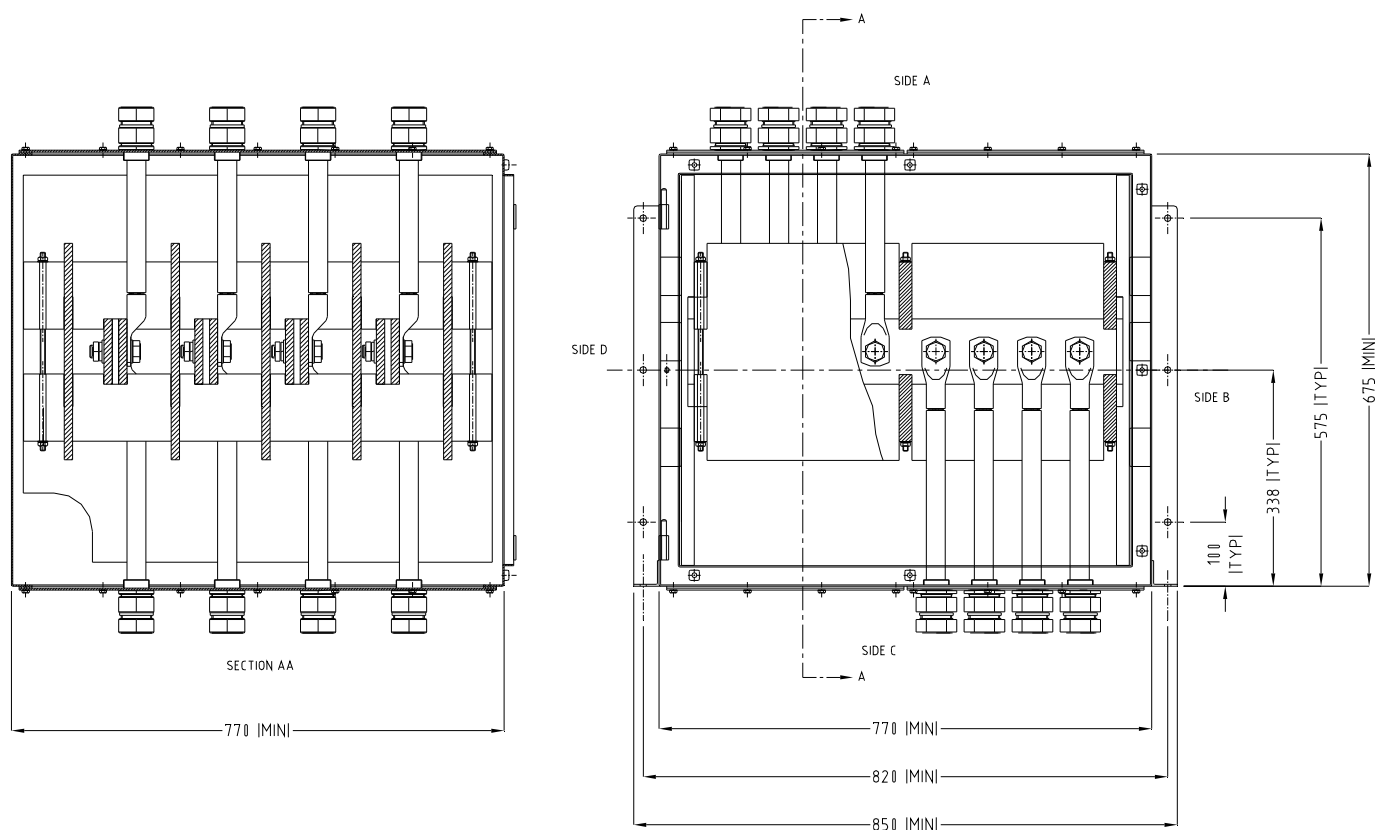
* (x-x) demotes the number of connectors per phase, 1st position = top, 2nd position = bottom. For example: BBB(6-3) = 6 x conductors per phase top entry and 3 x conductor per phase bottom entry.

Standard Specifications

Enclosure Type	High Voltage
Ingress Protection	IP66 to EN60529, Type 4X, DTS-01
Impact Resistance	>7Nm
Material	2mm 316L Stainless Steel (EN 1.4404) enclosure with orbital finish, silicone gasket and captive 316 stainless steel fasteners, 5mm 316L (EN 1.4404) Stainless Steel gland plates
Ambient Temp Rating	-40°C to +40°C T5/T6, -40°C to +60°C T6
Temp Classification	Refer to certificate
Crimp Lugs	16mm ² to 800mm ²
Earthing	Via studs on enclosure, door and gland plates
Mounting	Via heavy duty 3mm thick external angle frames
Certification	
Area Classification	Zone 1 & 21, Gas and Dust / Class 1 Division 2 / InMetro
Type of Protection	Ex e (Increased Safety), Ex tb (Dust Protected)
Apparatus Coding	Ex e IIC T5/T6 Gb, Ex tb IIIC T65°C /T55°C Db
Certificate Number	ATEX: Sira 99ATEX3177 / IECEx: SIR 12.0155 / TÜV 11.0322



Dimensions



Options

ACH	Anti-condensation heater
EP	Electro-polished
PS	Epoxy powder coated, smooth finish (RAL colour may be specified)
PT	Epoxy powder coated, Hammer Grey

Add the required suffix to the product reference.

Example: BBB(6-3)ACHPS = Bus Bar box, 6 x conductors per phase top entry and 3 x conductor per phase bottom entry, fitted with anti-condensation heater and epoxy powder coated with a smooth finish.

Accessories

ABDM2010SS	M20 Breather drain
ABDM2510SS	M25 Breather drain