

■ GENERAL

The CS1000 is a 1 kV single-pole connecting device without breaking capacity. The connection and disconnection must be made off-load.

Live parts are protected against contact test finger (IP2X/IPXXB), according to IEC/EN 60529.

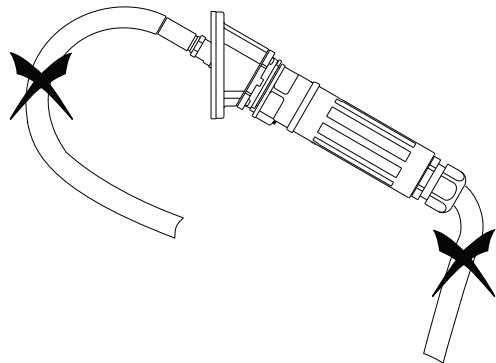
When connected, accessories have an IP66/IP67 protection. The socket-outlet alone has an IP66/IP67 protection when the cap is in place.

■ WARNINGS

- These accessories must be installed by a qualified electrician, according to applicable installation standards and to the present instruction sheet.
- Use a conductor cross-section suitable for the load.
- The tightening torque must not be transmitted to the insulating part of the accessory. Maintain the rear of the contact with a suitable key while tightening.
- Respect tightening torques.
- These accessories must be used according to their designed destination, in a strict respect of the required operation of

connection and disconnection.

- **Marechal** accessories must be used with **Marechal** complementary accessories only. Any repair or service must be achieved with genuine **Marechal** parts only.
- The cables must not exert any constraint on the accessories.



■ INSTALLATION

- The nominal current and voltage must be indicated on the supplied adhesive stickers which must be then filled out legibly and affixed on the accessories.

WIRING

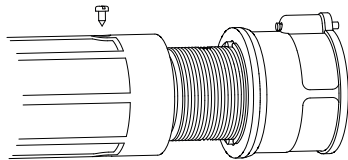
- Five sizes of lugs and threaded ferrules are available (see general catalogue).

Lug for conductor mm ²		Inner diameter mm	Current A
Flexible	Stranded		
50	70	11	200
70	95	13,1	250
95	120	14,5	300
120	150	16,2	350
150	185	18	400

- Strip the conductor by about 30 mm, according to the ferrule used.
- Crimp the threaded lug or the ferrule with an appropriate die (NFC 20-130 or VDE 0220 or another). A double hexagonal crimping is recommended. For threaded lugs, do not crimp beyond the line.
- Apply a torque of 40 N.m.

ASSEMBLY OF THE HANDLE

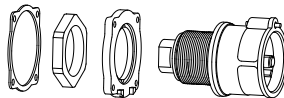
Screw handle onto the product and tighten the cable gland with an appropriate tool. Block the rotation of the handle with the supplied screw.



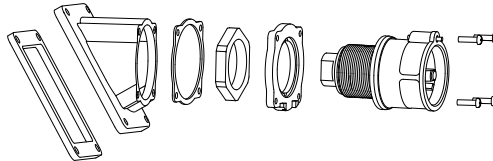
FINAL ASSEMBLY

Depending on the configuration used, assemble the components as shown:

Assembly on adapter plate

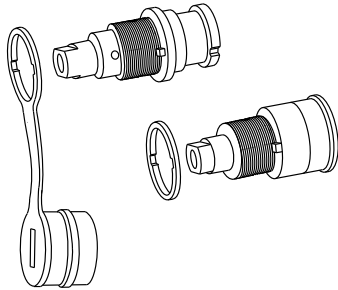


Assembly on angle adapter



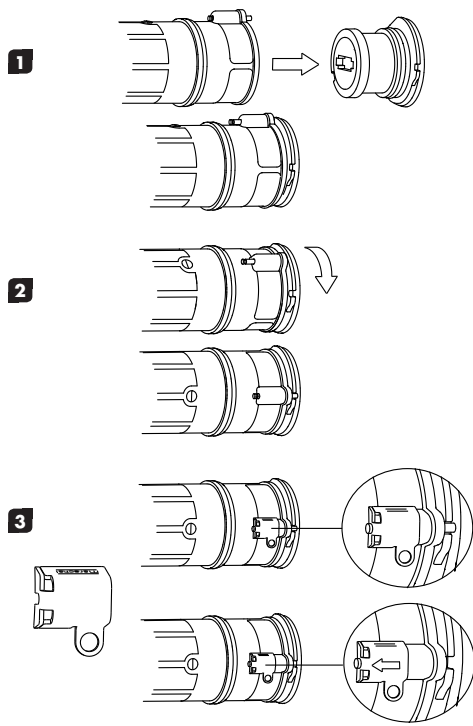
COLOUR-CODED RING AND COLOUR-CODED RING WITH ATTACHED CAP

The colour-coded rings allow visual identification of the pole, according to the standardized colour code. Place these rings between the inlet or socket-outlet and its rear accessory or panel board. These rings act as seals. For socket-outlets and connectors, the cap is attached to the colour-coded ring.



■ OPERATION

- (1) Insert the plug into the corresponding socket-outlet.
- (2) Turn a quarter of a turn to the right until locked.
- (3) To withdraw the plug, push the locking finger backwards

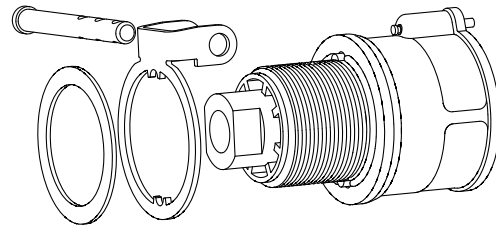


with the key provided and turn the plug a quarter of a turn to the left.

Put the cap back in place.

PADLOCKING OPTION

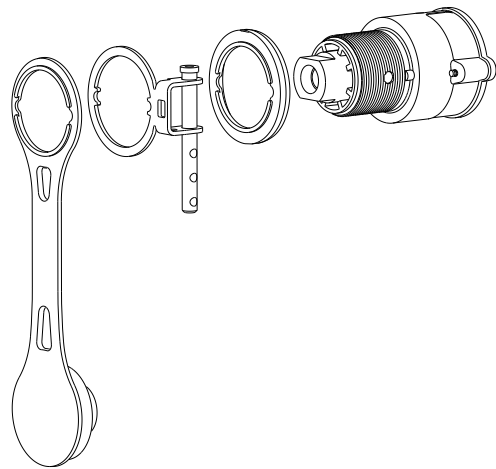
Place the padlocking rings as shown below:



Once connected, insert the shaft and padlock it.

OPTIONAL PLUG CAP

Assemble plug cap as shown below:



■ MAINTENANCE

- Ensure that the fixing screws, caps and cable glands are tight.
- Check the cleanliness of contact surfaces. Any deposit can be rubbed off with a clean cloth. If necessary, replace damaged contacts.
- Inspect periodically the O ring of the socket-outlet/connector.

■ DECLARATION OF CONFORMITY

These accessories use the **Marechal** technology. They have been designed, manufactured and controlled in a strict respect of the requirements and rules of international and European standards and particularly the European Low Voltage Directive 2006/95/EC. They bear the CE marking whenever applicable.

Note: The CE marking does not apply to spare parts and components supplied separately.

Whenever these accessories fall within its scope:

We,
MARECHAL ELECTRIC S.A.,
5 avenue de Presles - F-94417 Saint-Maurice Cedex - France

Declare that the CS1000s satisfy the measures set in the European Low Voltage Directive 2006/95/EC and in the application decrees of Member States.

Affixing year of CE marking: 2010

Saint-Maurice
Quality Manager
MARECHAL ELECTRIC S.A.

■ RESPONSIBILITY

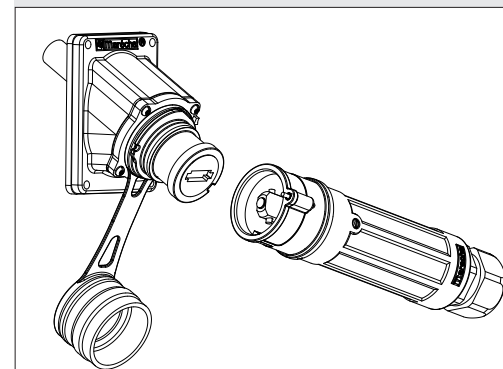
In the case **Marechal** accessories are associated with accessories or spare parts other than from **Marechal** the CE marking is invalidated and MARECHAL ELECTRIC S.A.'s responsibility cannot be engaged. MARECHAL ELECTRIC S.A.'s responsibility is strictly limited to the obligations expressly agreed in its general sales conditions. Any penalty or indemnity provided herein will be considered as lump damages, redeeming from any other sanctions.



MARECHAL ELECTRIC S.A. is a member of the international association, BECMA: the Butt-contact Electrical Connectors Manufacturers' Association.

INSTRUCTION SHEET

Marechal Technology



N° 27e - Rev. : 2 - 07/2013

CS1000



THORNE &
DERRICK
INTERNATIONAL

Thorne & Derrick
+44 (0) 191 410 4292
www.heatingandprocess.com