



DSN37C

MULTI-CONTACT CONNECTORS GRP

16 A
IP66/IP67

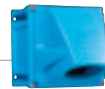
TYPICAL CONFIGURATION



WALL MOUNTING SOCKET **DSN37C**



PLUG **DSN37C**



Wall box poly 70°
51CA058



Socket-outlet
61C4003



Straight handle poly
616A013



Inlet
61C8003

ELECTRICAL FEATURES

Maximum voltage	480 V
Impulse withstand voltage	5 kV / Pollution degree 3
Contact resistance	< 2mΩ
Permitted current range	4-20 mA / 16 A
Rated current percontact (max)	16 A
Total current carried	≤ 360 A
Flexible wiring (min-max)	1 - 2,5 mm ²
Wiring (terminals)	crimping
Keying positions	3

CLIMATIC FEATURES

Ambient temperature	-40 °C to +60 °C
IP protection connected plug	IP66/IP67
IP protection lid closed	IP66/IP67
Salt, Fog performance	200 hrs minimum connected
Resistance to fluids	Motor oils, petrol, fats, detergents...

MECHANICAL FEATURES

Butt contacts	Female contacts: copper alloy silver plated / Male contacts: Silver-nickel tips
Contact protection	Silvering
Load cycles	More than 5000 cycles
Shock resistance	IK08
Vibration	Frequency 5-1000 Hz, 1g / (90 minutes on each critical frequency) according to IEC 6068-2-6

**SOCKET-
OUTLET** female
DSN37C (16 A)



INLET male
DSN37C (16 A)



Umax	Contacts	Part no.	Part no.
480 V	37 contacts	61C4003	61C8003

Each product is supplied with 3 bags of 13 contacts depending on the maximum configuration.
This allows you to set up the product to suit your needs.

BAG OF 13 CONTACTS (SUPPLIED WITH INSULATION SLEEVES AND FERRULES)

Female socket-outlet Part Number	01AA213
Male inlet Part Number	61CA113

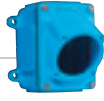


BOXES

Cable gland
not included



**Wall box
poly 30°**



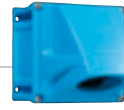
**Wall box metal +
inclined poly 30°**



**Wall box metal +
straight metal sleeve**



**Wall box metal +
inclined metal 70°**



**Wall box poly +
inclined poly 70°**

Entry					
M25	616A053	616A653	696A095	873A053	Not drilled and without cable gland Part no. 51CA058
M32		616A653419	696A095419	873A053419	
M40		616A653420	696A095420	873A053420	

SLEEVES



**Inclined
poly 30°**

616A027



**Inclined
poly 70°**

51CA757



**Straight
metal**

696A127



**Inclined
metal 70°**

873A087

HANDLES



Straight poly



**Straight poly with
poly cable gland**



**Straight metal
with metal cable
gland**



**Straight poly
without cable
gland with metric
threaded entry**

10-30 mm	616A013	5-12 mm	616A25320P	7-13 mm	616A95320M	M20	616A253417
10-30 mm	616A473*	9-18 mm	616A753	8-16 mm	616A963	M25	616A253418
		14-25 mm	616A25332P	16-24 mm	616A95332M	M32	616A253419
		18-32 mm	616A25340P	22-32 mm	616A95340M	M40	616A253420

*With built-in finger draw plate (recommended for inline connections)

ACCESSORIES & OPTIONS

**Locking with shaft for 3 padlocks
ø 4 mm (padlocks not supplied)**

Socket no. + 844

**Locking with shaft for 2 padlocks
ø 8 mm (padlocks not supplied)**

Socket no. + Z1646

Lockable plug: contact us

E-Stop button

Socket no. + 453

Inlet cap

616A426

**Closing mechanism (in-line connections)
(a pair of finger draw plates)**

616A346

180° opening lid

Socket no. + 10

Self-returning lid

Socket no. + R

180° opening and self-returning lid

Socket no. + 18



ACCESSORIES & OPTIONS

Crimping tool

61CA500



Helavia sleeve expansion tool

61CA400

**Bag of 13 heat shrink
insulation sleeves**

61CA083