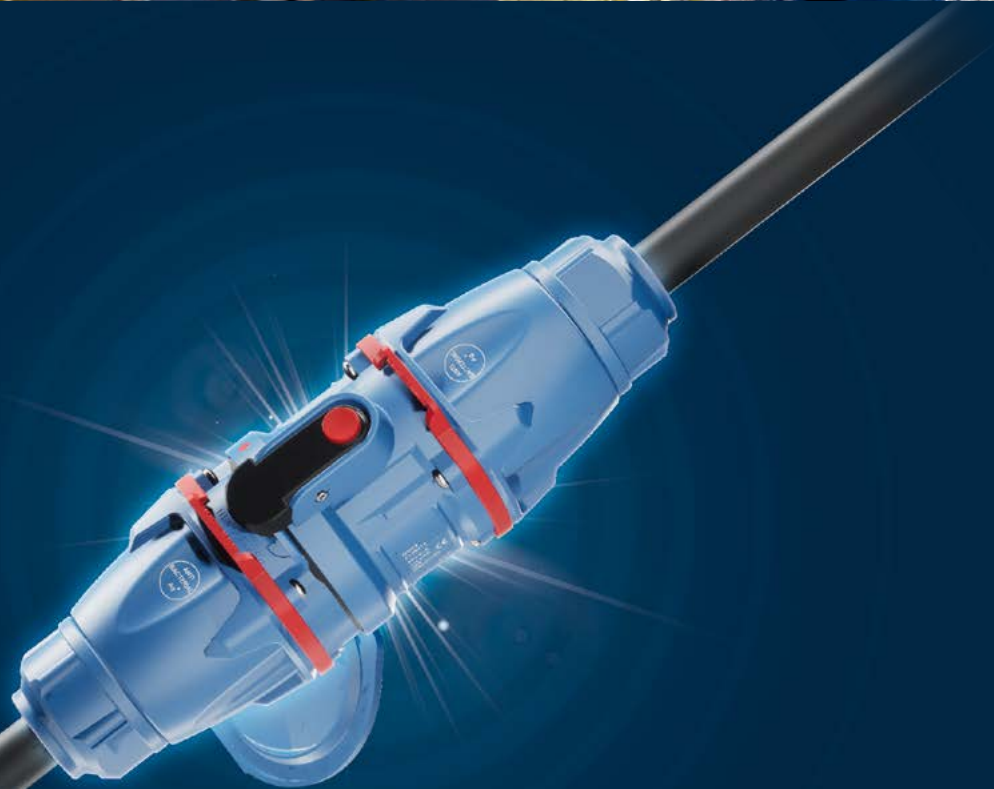




**THE  
ESSENTIAL**  
UP TO 1250 A



### LASER MARKING

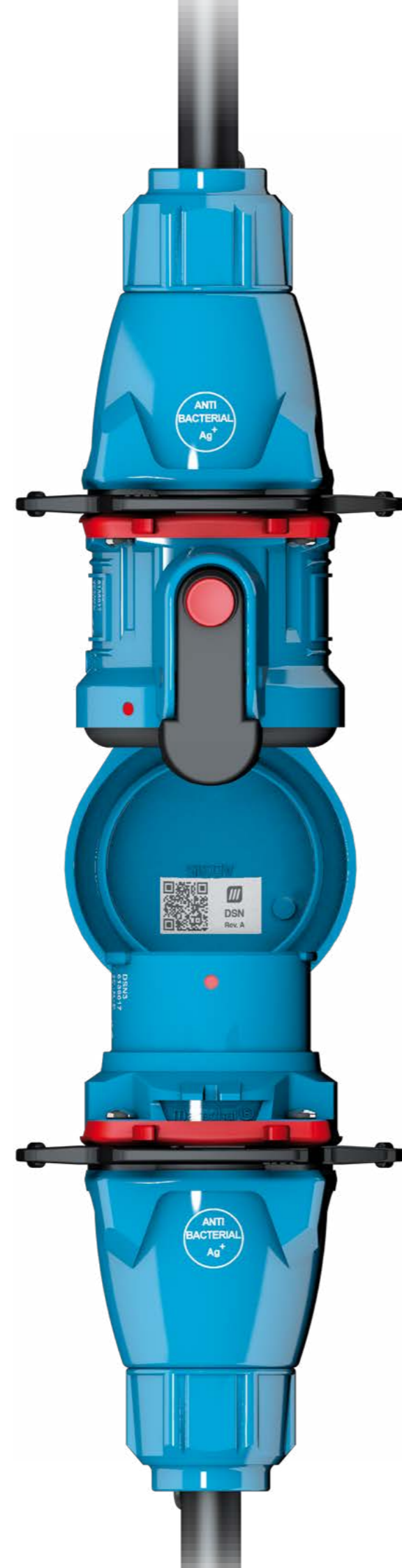
Simple and permanent product identification.

### QR CODE

Instant access to instructions for use.

### ANTIBACTERIAL TREATMENT

Contamination prevention.



Since 1952, MARECHAL ELECTRIC has been the reference in terms of power connection safety.

At the heart of innovation MARECHAL ELECTRIC continues to invest in the most advanced materials and reliable technologies.

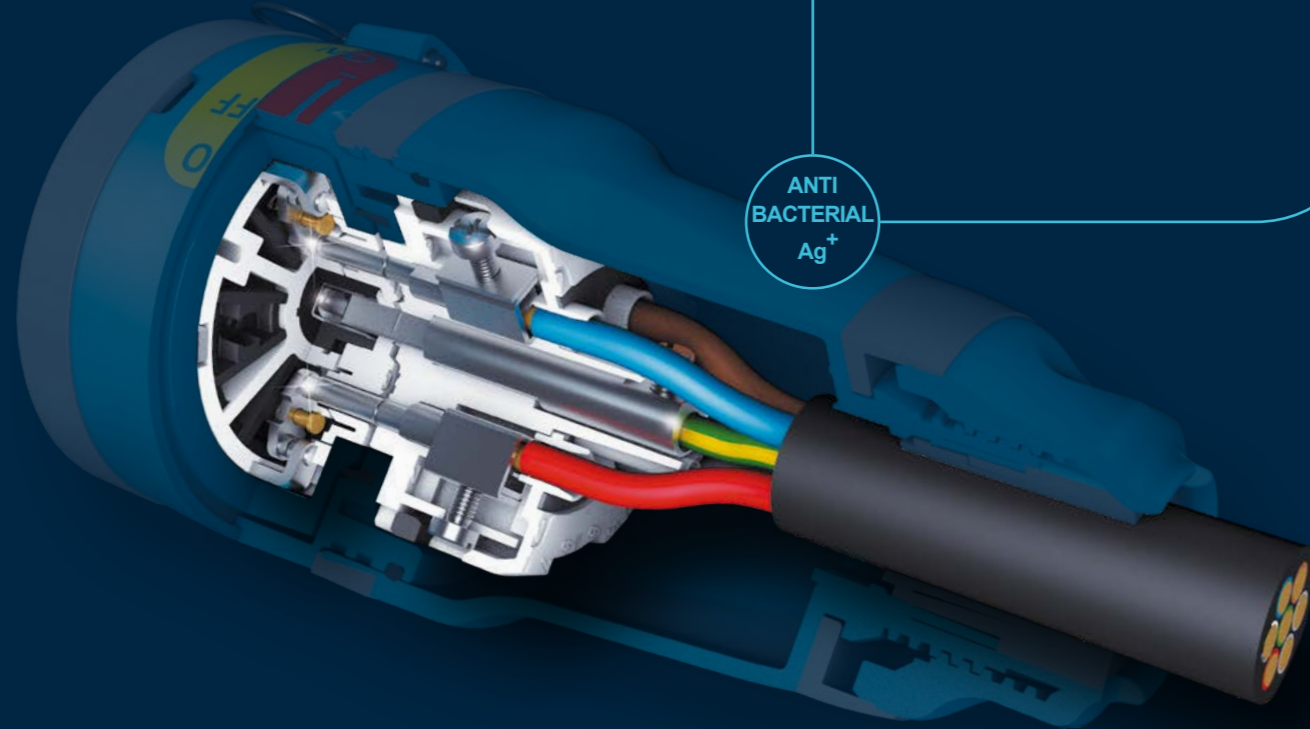
MARECHAL® offers both for industrial and Ex environments, connectors, socket-outlets, switch-rated DECONTACTOR™ socket-outlets and the first separable switch-disconnector EVO40.

All of our products are designed, manufactured and controlled in France, in strict compliance with the requirements of international IEC, EN and UL standards.

EVO40 SWITCH-DISCONNECTOR 18.5 kW .....	4
ANTIBACTERIAL SERIES .....	8
COMPACT SOCKET 16/30 A.....	9
DECONTACTOR™	
AN UNRIVALLED LEVEL OF SAFETY .....	10
DECONTACTOR™ 20 A .....	12
DECONTACTOR™ 32 A .....	13
DECONTACTOR™ 63 A .....	14
DECONTACTOR™ 90 A .....	15
DISTRIBUTION BOX 16 - 90 A .....	15
DECONTACTOR™ 125 A/150 A .....	16
DECONTACTOR™ 200 A/250 A .....	17
HEAVY-DUTY PLUGS & SOCKETS UP TO 660 A .....	19
SINGLE POLE POWER CONNECTOR FROM 400 TO 1250 A .....	20
MULTICONTACT FROM 7 TO 37 PIN .....	22
MAKING MOBILITY SAFE.....	24
RETTBOX®S 20 A/32 A .....	25
SOCKET OR JUNCTION BOXES.....	26
JUNCTION BOXES .....	26

# EVO40 18.5 kW SEPARABLE SWITCH- DISCONNECTOR

ANTI  
BACTERIAL  
Ag<sup>+</sup>



## VISIBLE AND FULLY APPARENT BREAKING

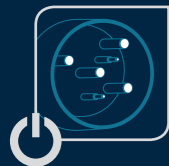
EVO40 is a separable switch-disconnector with a manual rotary selector switch included, from 2 to 6 poles. It is designed for making and breaking on load as well for low voltage circuit current interruption, as per IEC/EN 60947-3 standard. Its robust mechanism enables opening and separation, even in overload and overvoltage cases (AC-23/AC-3).

### EVO OFFERS:

- better continuity of service:
  - no need for a 30 mA residual current device (RCD): no nuisance tripping,
  - reduced and simplified maintenance,
  - reduced downtimes,
- compact design: space and cost savings,
- securing and simplifying interventions: for maintenance or replacement of an equipment, EVO can be separated in two parts and padlocked. When separated, EVO has an IP4X/IPXXD rating. There is therefore no need for electrically-qualified personnel nor for protection procedures to be followed.

### ADDITIONAL FEATURES

- Electrical endurance of **15,000 cycles** (when used with In AC-23A 690VAC/40 A).
- Rated insulation voltage up to 1000VAC.
- **Fast double** current interruption per pole with **clear visible break**.
- Self-cleaning silver alloy contacts with silver-plated tips and a unique and patented "twist" mechanism.
- **Compact design** (50° or 90° angled versions wall box).
- Up to 12 keying positions.



Switch-disconnectors in the AC-22A/AC-23A (18.5 kW) and AC-3 (11 kW) categories. Up to 6 poles + earth.

### LOAD-BREAKING CAPACITY

kW/V	230 V	400 V	690 V
AC-21A/AC-22A	40 A	40 A	40 A
AC-23A	11 kW	18,5 kW	18,5 kW
AC-3	7,5 kW	11 kW	11 kW



**Contacts with silver-nickel tips.**  
Exceptional connection quality.



**Padlockable in OFF position** for strict compliance with LOTO procedures.



**IP4X/IPXXD safety shutter.**  
Optimum protection against electric shock.  
No access to live parts.



**IK09.** Glass-fibre reinforced poly enclosure.

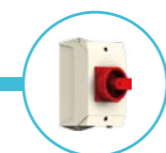


**IP66/IP67/IP69** in ON and OFF positions.

### STANDARD INSTALLATION



30 mA residual current device  
+  
Circuit breaker



rotary switch disconnector



Cable coupler



### EVO SOLUTION



Circuit breaker

EVO



# 18,5 kW



**U MAX**  
690 V



## EVO40

- 2,5-10 mm<sup>2</sup> <sup>(a)</sup>  
2,5-16 mm<sup>2</sup> <sup>(b)</sup>
- Antibacterial
- IP66/IP67  
IP69
- POLY
- IK09
- 25 °C  
+60 °C
- AC-21/AC-22  
AC-23/AC-3

<sup>(a)</sup> Flexible. <sup>(b)</sup> Stranded.



Voltage	Poles	Supply	Load	Straight sleeve	70° inclined sleeve	Handle <sup>(1)</sup>	90° wall box <sup>(2)</sup>
190-250 V AC	6P+E	814403W*	814803W*	51LM0	51LM7	511P0D21AG	51LC9000
380-440 V AC	6P+E	814401W*	814801W*	51LM0	51LM7	511P0D21AG	51LC9000
660-690 V AC	6P+E	814405W*	814819W*	51LM0	51LM7	511P0D21AG	51LC9000
Load side cap IP66/IP67 padlockable		Included					

<sup>(1)</sup> Gland size 5-21 mm.

<sup>(2)</sup> Without drilling, top entry. Reversible wall box for 50° angle with bottom entry.

\* For 2P+E versions, replace the last digit of the reference by 2, for 3P+E versions, by 3, and for 4P+E versions, by 4.

### ADDITIONAL PADLOCKING KEYS

Packaging = 10      814A541

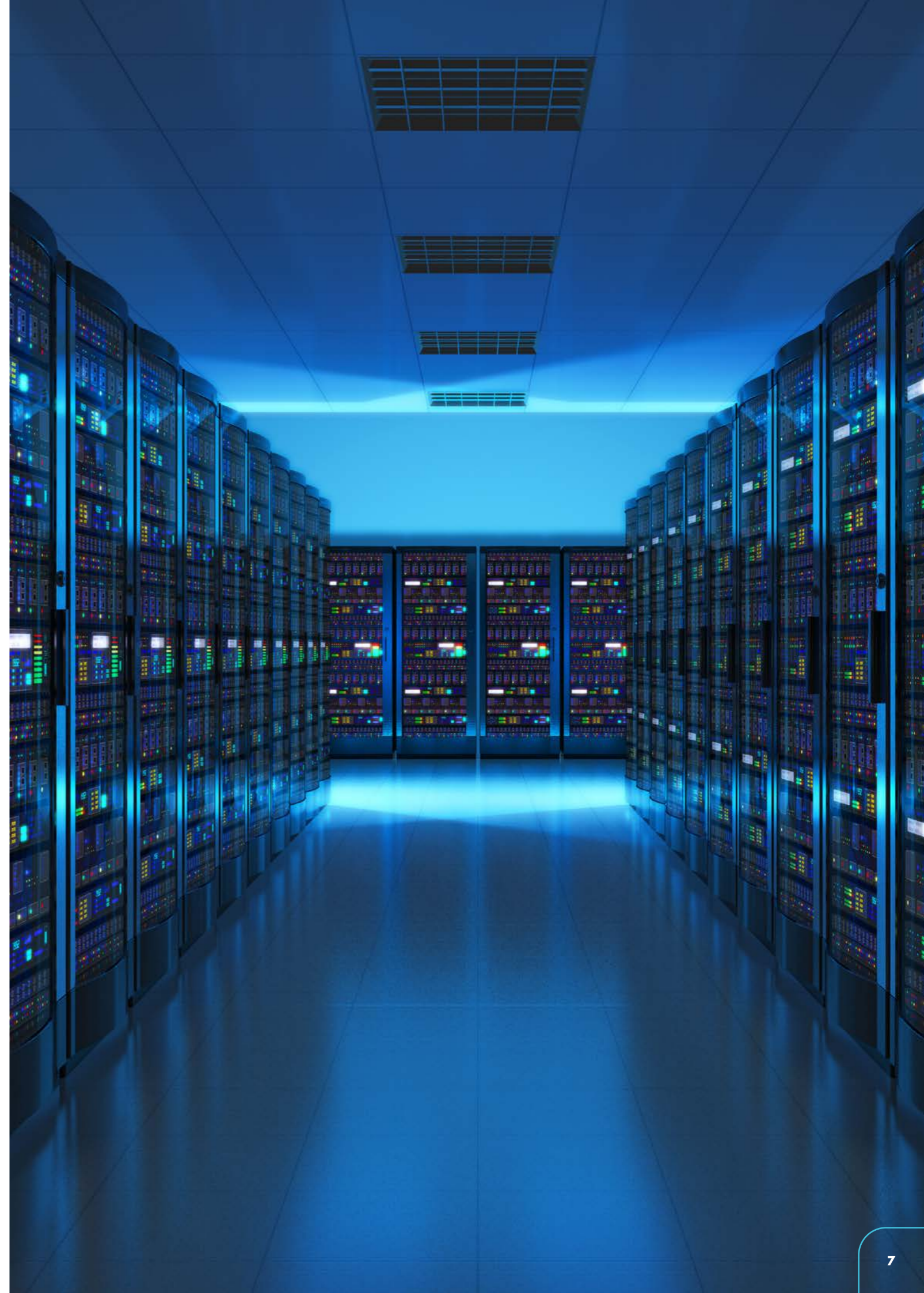
### SAFETY HASP FOR UP TO 6 PADLOCKS

     613A541



**i** A padlocking key is supplied with each supply/load.

**POSSIBLE INSTALLATIONS**



## ANTIBACTERIAL

### A new safety requirement

Made from a selection of resistant materials, our poly handles, injected with silver ions (Ag<sup>+</sup>), provide an effective, long-lasting barrier that limits the proliferation of bacteria.

ANTI  
BACTERIAL  
Ag<sup>+</sup>

### A wide range of applications

Pharmaceutical industry, food industry, chemical industry, healthcare facilities, industrial kitchens, water treatment... all sectors of activity are concerned. The high temperature tolerance of the antibacterial additive makes it ideal for use in all high temperature cleaning processes.

## GET ALL THE BENEFITS OF MARECHAL® TECHNOLOGY



### Simple, precise identification

The laser marking on the handle guarantees antibacterial treatment.



### Healthy and safe environments

Using "antibacterial" treated accessories reduces the presence of microorganisms and the risk of contamination in many industries.



### Safe to use

The active ingredient complies with regulations on biocides.



### Excellent performance

Mechanical performance, watertightness and UV resistance remain fully in line with MARECHAL® standards.



### A long-lasting additive

The antibacterial additive is not a coating, it is injected into the mass.



### Resistant to high temperatures

The antibacterial treatment applied to MARECHAL® products is resistant to high temperatures and retains its effectiveness.

# 16 A

U MAX  
480 V

## COMPACT CONNECTOR



# PNC



Voltages	Pole configuration	Socket-outlet	Inclined socket	Wall mounting socket	Coupler socket	Plug	Appliance inlet
480 V AC/V DC	5P	01E4007	01E4007	01E4007	01E3007 <sup>(1)</sup>	01E1007 <sup>(1)</sup>	01E8007
	+ accessories	/	551M3 +251A457-E	551B3M20 +251A457-E	/	/	/

<sup>(1)</sup> Gland size 11-15 mm.

# 30 A

U MAX  
500 V

## COMPACT PLUGS & SOCKETS



# PN



*i* Metal references are available in the main catalogue or [marechal.com](http://marechal.com).

Voltages	Pole configuration	Socket-outlet	Inclined socket	Wall mounting socket	Coupler socket	Plug	Appliance inlet
190-250 V AC	1P+N+E + accessories	01N4015 /	01N4015 511M3	01N4015 511B3M20 <sup>(1)</sup>	01N4015 511P6D18AG <sup>(2)</sup>	01N8015 511P6D18AG <sup>(2)</sup>	01N8015 /
380-440 V AC	3P+E + accessories	01N4013 /	01N4013 511M3	01N4013 511B3M20 <sup>(1)</sup>	01N4013 511P6D18AG <sup>(2)</sup>	01N8013 511P6D18AG <sup>(2)</sup>	01N8013 /
190-250 V AC	3P+N+E + accessories	01N4017 /	01N4017 511M3	01N4017 511B3M20 <sup>(1)</sup>	01N4017 511P6D18AG <sup>(2)</sup>	01N8017 511P6D18AG <sup>(2)</sup>	01N8017 /
380-440 V AC	3P+N+E + accessories	01N4017 /	01N4017 511M3	01N4017 511B3M20 <sup>(1)</sup>	01N4017 511P6D18AG <sup>(2)</sup>	01N8017 511P6D18AG <sup>(2)</sup>	01N8017 /

<sup>(1)</sup> M20 threading - <sup>(2)</sup> Gland size 9-18 mm. The main catalogue contains all the available contacts configurations.

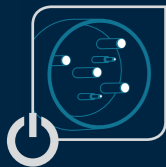
## ACCESSORIES AND OPTIONS

PRODUCT	Locking with padlock ø 4 mm (padlocks not supplied)	Inlet cap	180° Opening lid	Self-returning lid (without full closure IP40)
PN	Socket ref. + 843	01NA426	Socket ref. + 10	Socket ref. + R
PNC	/	01EA126	/	/

## DECONTACTOR™ AN UNRIVALLED SAFETY LEVEL

The only socket-outlet with built-in switch up to **250 A/110 kW**.

ANTI  
BACTERIAL  
Ag<sup>+</sup>



Built-in switch up to 250 A.



Padlocking facility for strict compliance with LOTO procedures.



Spring-mounted crimped braid and butt contacts with silver-nickel tips. Exceptional connection quality.



Elastic ring connection terminals. Prevent terminal loosening due to conductor creep, vibration or thermal shock.



IP4X/IPXXD safety shutter. Optimum protection against electric shock. No access to live parts.



Poly IK09 or metal IK10 enclosures. Resistant to the harshest environments (mechanical shock, vibration, EMC, corrosion).



Standard IP66/IP67/IP69.



## MAIN OPTIONS



### LOCKOUT-TAGOUT CAPABILITY

The use of MARECHAL® products can be part of your LOCKOUT-TAGOUT procedures.



### STOP-LATCH

This option is ideal for quick disconnection of machinery and equipment by employees wearing gloves.

The latch is fitted with a red label with warning «stop» for ease of identification.

**The use of this latch is not recommended in case of extension cables.**



### IN-LINE CONNECTIONS

A pair of finger draw plates to aid closing.



### SELF-EJECTING SERIES

Self-ejecting systems avoid damage to the electrical installation when the mobile equipment is moved.



### INDUSTRIAL/DOMESTIC ADAPTER

In order to allow the connection of an appliance fitted with a domestic plug to an industrial type socket-outlet, MARECHAL ELECTRIC has developed an adapter which features a MARECHAL® single phase industrial plug and a 10/16 A - 230 V domestic socket. The adapter includes a 6 x 32 mm 10/16 A fuse-link.

Part numbers (P/N°) for these products:

TYPE		DSN1	DSN3	DS1	PN
France 16 A fuse	Poly	6118015D11	6138015D11	3118015D11	01N8015D11
	Metal	-	-	-	09N8015D11
United Kingdom 16 A fuse	Poly	6118015D40	6138015D40	3118015D40	01N8015D40
	Metal	-	-	-	09N8015D40
Germany 16 A fuse	Poly	6118015D30	6138015D30	3118015D30	01N8015D30
	Metal	-	-	-	09N8015D30
Italy 16 A fuse	Poly	6118015D06	6138015D06	3118015D06	01N8015D06
	Metal	-	-	-	09N8015D06

# 20 A



**U MAX**  
500 V

**DECONTACTOR™**  
SWITCH + SOCKET-OUTLET

## DSN1



<sup>(a)</sup> Flexible. <sup>(b)</sup> Stranded.



**i** Metal version available soon.



Voltages	Pole configuration	Socket-outlet	Inclined socket	Wall mounting socket	Coupler socket	Plug	Appliance inlet
190-250 V AC	1P+N+E + accessories	6114015 /	6114015 511M3	6114015 511B3M20 <sup>(1)</sup>	6114015 511POD18AG <sup>(2)</sup>	6118015 511POD18AG <sup>(2)</sup>	6118015 /
380-440 V AC	3P+E + accessories	6114013 /	6114013 511M3	6114013 511B3M20 <sup>(1)</sup>	6114013 511POD18AG <sup>(2)</sup>	6118013 511POD18AG <sup>(2)</sup>	6118013 /
190-250 V AC 380-440 V AC	3P+N+E + accessories	6114017 /	6114017 511M3	6114017 511B3M20 <sup>(1)</sup>	6114017 511POD18AG <sup>(2)</sup>	6118017 511POD18AG <sup>(2)</sup>	6118017 /

<sup>(1)</sup> M20 threading - <sup>(2)</sup> Gland size 9-18 mm.  
The main catalogue contains all the available contacts configurations.

# 20 A



**U MAX**  
550 V

**DECONTACTOR™**  
SWITCH + SOCKET-OUTLET

## DXN1



<sup>(a)</sup> Flexible. <sup>(b)</sup> Stranded.

Ⓜ II 2 G D Ex db eb IIC T6/T5 Gb Ex tb IIIC T70°C/T90°C Db



**i** Available for zones 2-22 without breaking capacity. Metal version available soon.



Voltages	Pole configuration	Socket-outlet	Inclined socket	Wall mounting socket	Coupler socket	Plug	Appliance inlet
190-250 V AC	1P+N+E + accessories	2514015 /	2514015 251A057	2514015 251AB53 <sup>(1)</sup>	2514015 251A753 <sup>(1)</sup>	2518015 251A753 <sup>(1)</sup>	2518015 /
380-440 V AC	3P+E + accessories	2514013 /	2514013 251A057	2514013 251AB53 <sup>(1)</sup>	2514013 251A753 <sup>(1)</sup>	2518013 251A753 <sup>(1)</sup>	2518013 /
380-440 V AC	3P+N+E + accessories	2514017 /	2514017 251A057	2514017 251AB53 <sup>(1)</sup>	2514017 251A753 <sup>(1)</sup>	2518017 251A753 <sup>(1)</sup>	2518017 /

<sup>(1)</sup> Gland size 10-14 mm.  
The main catalogue contains all the available contacts configurations.

ACCESSORIES AND OPTIONS



DECONTACTOR™	In-line connections (a pair of finger draw plates to aid closing)	Inlet cap IP66/IP67	Self-returning lid (without full closure IP40)	Locking pin for 2 padlocks Ø 8 mm (padlocks not supplied)
DSN1	611A346	611A426	Socket ref. + R	Socket ref. + 843
DXN1	611A346	Included	Socket ref. + R	Socket ref. + 843

# 32 A



**U MAX**  
690 V

**DECONTACTOR™**  
SWITCH + SOCKET-OUTLET

## DSN3



<sup>(a)</sup> Flexible. <sup>(b)</sup> Stranded.



**i** Metal version available soon.



Voltages	Pole configuration	Socket-outlet	Inclined socket	Wall mounting socket	Coupler socket	Plug	Appliance inlet
190-250 V AC	1P+N+E + accessories	6134015 /	6134015 512M3	6134015 512B3M20 <sup>(1)</sup>	6134015 512POD21AG <sup>(2)</sup>	6138015 512POD21AG <sup>(2)</sup>	6138015 /
380-440 V AC	3P+E + accessories	6134013 /	6134013 512M3	6134013 512B3M20 <sup>(1)</sup>	6134013 512POD21AG <sup>(2)</sup>	6138013 512POD21AG <sup>(2)</sup>	6138013 /
190-250 V AC 380-440 V AC	3P+N+E + accessories	6134017 /	6134017 512M3	6134017 512B3M20 <sup>(1)</sup>	6134017 512POD21AG <sup>(2)</sup>	6138017 512POD21AG <sup>(2)</sup>	6138017 /

<sup>(1)</sup> M20 threading - <sup>(2)</sup> Gland size 5-21 mm.  
The main catalogue contains all the available contacts configurations.

# 32 A



**U MAX**  
750 V

**DECONTACTOR™**  
SWITCH + SOCKET-OUTLET

## DXN3



<sup>(a)</sup> Flexible. <sup>(b)</sup> Stranded.

Ⓜ II 2 G D Ex db eb IIC T6/T5 Gb Ex tb IIIC T57°C/T77°C Db



**i** Available for zones 2-22 without breaking capacity. Metal version available soon.



Voltages	Pole configuration	Socket-outlet	Inclined socket	Wall mounting socket	Coupler socket	Plug	Appliance inlet
190-250 V AC	1P+N+E + accessories	2534015 /	2534015 253A027	2534015 253AB53 <sup>(1)</sup>	2534015 253A783 <sup>(2)</sup>	2538015 253A783 <sup>(2)</sup>	2538015 /
380-440 V AC	3P+E + accessories	2534013 /	2534013 253A027	2534013 253AB53 <sup>(1)</sup>	2534013 253A783 <sup>(2)</sup>	2538013 253A783 <sup>(2)</sup>	2538013 /
380-440 V AC	3P+N+E + accessories	2534017 /	2534017 253A027	2534017 253AB53 <sup>(1)</sup>	2534017 253A783 <sup>(2)</sup>	2538017 253A783 <sup>(2)</sup>	2538017 /

<sup>(1)</sup> Gland size 10-14 mm - <sup>(2)</sup> Gland size 12-18 mm.  
The main catalogue contains all the available contacts configurations.

ACCESSORIES AND OPTIONS



DECONTACTOR™	In-line connections (a pair of finger draw plates to aid closing)	Inlet cap IP66/IP67	Self-returning lid (without full closure IP40)	Locking pin for 2 padlocks Ø 8 mm (padlocks not supplied)
DSN3	613A346	613A426	Socket ref. + R	Socket ref. + 843
DXN3	613A346	253A426	Socket ref. + R	Socket ref. + 843

# 63 A



**U MAX**  
1 000 V

**DECONTACTOR™**  
SWITCH + SOCKET-OUTLET

## DSN6

- 6-16 mm<sup>2</sup> (a) / 10-25 mm<sup>2</sup> (b)
- Ag<sup>+</sup> Anti-bacterial
- 2/4 AUX
- IP66/IP67 IP69
- POLY
- IK09
- 40°C / +60°C
- AC-22 / AC-23

(a) Flexible. (b) Stranded.



**i** Metal version available soon.



Voltages	Pole configuration	Socket-outlet	Inclined socket	Wall mounting socket	Coupler socket	Plug	Appliance inlet
190-250 V AC	1P+N+E + accessories	6164015 /	6164015 513M3	6164015 513B3M25 <sup>(1)</sup>	6164015 513P0D30AG <sup>(2)</sup>	6168015 513P0D30AG <sup>(2)</sup>	6168015 /
380-440 V AC	3P+E + accessories	6164013 /	6164013 513M3	6164013 513B3M25 <sup>(1)</sup>	6164013 513P0D30AG <sup>(2)</sup>	6168013 513P0D30AG <sup>(2)</sup>	6168013 /
190-250 V AC 380-440 V AC	3P+N+E + accessories	6164017 /	6164017 513M3	6164017 513B3M25 <sup>(1)</sup>	6164017 513P0D30AG <sup>(2)</sup>	6168017 513P0D30AG <sup>(2)</sup>	6168017 /

<sup>(1)</sup> M25 threading - <sup>(2)</sup> Gland size 10-30 mm.  
The main catalogue contains all the available contacts configurations.

# 63 A



**U MAX**  
750 V

**DECONTACTOR™**  
SWITCH + SOCKET-OUTLET

## DXN6



- ZONE 1, 21
- 6-16 mm<sup>2</sup> (a) / 6-25 mm<sup>2</sup> (b)
- 2 AUX
- IP66/IP67
- POLY
- IK09
- 40°C / +60°C

(a) Flexible. (b) Stranded.



**i** Available for zones 2-22 without breaking capacity. Metal version available soon.



Ⓢ II 2 G D Ex db eb IIC T6/T5 Gb Ex tb IIIC T87°C/T107°C Db

Voltages	Pole configuration	Socket-outlet	Inclined socket	Wall mounting socket	Coupler socket	Plug	Appliance inlet
190-250 V AC	1P+N+E + accessories	2564015 /	2564015 256A027	2564015 256AB8840P <sup>(1)</sup>	2564015 256A753 <sup>(2)</sup>	2568015 256A753 <sup>(2)</sup>	2568015 /
380-440 V AC	3P+E + accessories	2564013 /	2564013 256A027	2564013 256AB8840P <sup>(1)</sup>	2564013 256A753 <sup>(2)</sup>	2568013 256A753 <sup>(2)</sup>	2568013 /
380-440 V AC	3P+N+E + accessories	2564017 /	2564017 256A027	2564017 256AB8840P <sup>(1)</sup>	2564017 256A753 <sup>(2)</sup>	2568017 256A753 <sup>(2)</sup>	2568017 /

<sup>(1)</sup> Gland size 22-32 mm - <sup>(2)</sup> Gland size 12-18 mm.  
The main catalogue contains all the available contacts configurations.

ACCESSORIES AND OPTIONS



DECONTACTOR™	In-line connections (a pair of finger draw plates to aid closing)	Inlet cap IP66/IP67	Self-returning lid (without full closure IP40)	Locking pin for 2 padlocks Ø 8 mm (padlocks not supplied)
DSN6	616A346	616A426	Socket ref. + R	Socket ref. + 843
DXN6	616A346	256A426	Socket ref. + R	Socket ref. + 843

# 90 A



**U MAX**  
1 000 V

**DECONTACTOR™**  
SWITCH + SOCKET-OUTLET

## DS6

- 10-25 mm<sup>2</sup> (a) / 10-35 mm<sup>2</sup> (b)
- 2/4 AUX
- IP66/IP67
- POLY METAL
- IK09 / IK10
- 40°C / +60°C
- AC-22 / AC-23

(a) Flexible. (b) Stranded.



**i** Metal references are available in the main catalogue or [marechal.com](http://marechal.com).



Voltages	Pole configuration	Socket-outlet	Inclined socket	Wall mounting socket	Coupler socket	Plug	Appliance inlet
190-250 V AC	1P+N+E + accessories	3164015 <sup>(3)</sup> /	3164015 <sup>(3)</sup> 514M3	3164015 <sup>(3)</sup> 514B3M40 <sup>(1)</sup>	3164015 <sup>(3)</sup> 514P0D35 <sup>(2)</sup>	3168015 <sup>(3)</sup> 514P0D35 <sup>(2)</sup>	3168015 <sup>(3)</sup> /
380-440 V AC	3P+E + accessories	3164013 <sup>(3)</sup> /	3164013 <sup>(3)</sup> 514M3	3164013 <sup>(3)</sup> 514B3M40 <sup>(1)</sup>	3164013 <sup>(3)</sup> 514P0D35 <sup>(2)</sup>	3168013 <sup>(3)</sup> 514P0D35 <sup>(2)</sup>	3168013 <sup>(3)</sup> /
190-250 V AC 380-440 V AC	3P+N+E + accessories	3164017 <sup>(3)</sup> /	3164017 <sup>(3)</sup> 514M3	3164017 <sup>(3)</sup> 514B3M40 <sup>(1)</sup>	3164017 <sup>(3)</sup> 514P0D35 <sup>(2)</sup>	3168017 <sup>(3)</sup> 514P0D35 <sup>(2)</sup>	3168017 <sup>(3)</sup> /

<sup>(1)</sup> M40 threading - <sup>(2)</sup> Gland size 13-35 mm - <sup>(3)</sup> For 100 A version add suffix -228.  
The main catalogue contains all the available contacts configurations.

# Up to 90 A

## CD



## DISTRIBUTION BOX

Casing features :

- IP66/IP69<sup>(1)</sup>
- GRP<sup>(1)</sup>
- IK09<sup>(1)</sup>
- 40°C / +60°C<sup>(1)</sup>



**i** Configurations available upon request.

**i** You will find out our entire boxes range in the main catalogue or [marechal.com](http://marechal.com) (POLY, stainless steel, etc.).

<sup>(1)</sup> These characteristics may be modified by the installation of certain components (e.g. IP44 domestic sockets).

- ▶ IP66/IP69 water-and dust-tight
- ▶ Up to 10 modules
- ▶ Up to 2x 63 A DECONTACTOR™
- ▶ Complies with IEC/EN 61439-1 and IEC/EN 61439-3

- ▶ Composed of two parts fixed on hinges
- ▶ Pre-wired
- ▶ UV protected

ACCESSORIES AND OPTIONS



DECONTACTOR™	In-line connections (a pair of finger draw plates to aid closing)	Inlet cap IP66/IP67	Locking pin for 2 padlocks Ø 8 mm (padlocks not supplied)
DS6	316A346	316A426	Socket ref. + 843

# 150 A



**U MAX**  
1 000 V

## DECONTACTOR™ SWITCH + SOCKET-OUTLET

### DS9



<sup>(a)</sup> Flexible. <sup>(b)</sup> Stranded.



**i** Metal references are available in the main catalogue or [marechal.com](http://marechal.com).

Voltages	Pole configuration	Socket-outlet	Inclined socket	Wall mounting socket	Coupler socket	Plug	Appliance inlet
380-440 V AC	3P+E + accessories	3194013 /	3194013 515M3	3194013 595C3M40 <sup>(1)</sup>	3194013 555POD35 <sup>(2)</sup>	3198013 555POD35 <sup>(2)</sup>	3198013 /
190-250 V AC	3P+N+E + accessories	3194017 /	3194017 515M3	3194017 595C3M40 <sup>(1)</sup>	3194017 555POD35 <sup>(2)</sup>	3198017 555POD35 <sup>(2)</sup>	3198017 /
380-440 V AC							

<sup>(1)</sup> M40 threading - <sup>(2)</sup> Gland size 25-35 mm.

The main catalogue contains all the available contacts configurations.

# 125 A



**U MAX**  
750 V

## DECONTACTOR™ SWITCH + SOCKET-OUTLET

### DX9



<sup>(a)</sup> Flexible. <sup>(b)</sup> Stranded.

⊕ II 2 G Ex de IIC T6/T5 tD A21 T80°C/T90°C



Voltages	Pole configuration	Wall mounting socket	Coupler socket	Plug
380-440 V AC	3P+E + accessories	2694013 269AB5350M <sup>(1)</sup>	2694013 269A95350M <sup>(1)</sup>	269101350M <sup>(1)</sup>
380-440 V AC	3P+N+E + accessories	2694017 269AB5350M <sup>(1)</sup>	2694017 269A95350M <sup>(1)</sup>	269101750M <sup>(1)</sup>

<sup>(1)</sup> Gland size 23-35 mm.

The main catalogue contains all the available contacts configurations.

#### ACCESSORIES AND OPTIONS

DECONTACTOR™	Locking pin for 2 padlocks 8 mm (padlocks not supplied)	Inlet cap IP66/IP67	Inlet cap IP65
DS9	Socket ref. + 843	319A426	/
DX9	Included	/	269A926

# 250 A



**U MAX**  
1 000 V

## DECONTACTOR™ SWITCH + SOCKET-OUTLET

### DS2



<sup>(a)</sup> Flexible. <sup>(b)</sup> Stranded.



**i** Available in 350 A version without breaking capacity.

Voltages	Pole configuration	Socket-outlet	Inclined socket	Wall mounting socket	Coupler socket	Plug	Appliance inlet
380-440 V AC	3P+E +	3924013 /	3924013 596M6	3924013 596E6M63 <sup>(1)</sup>	3924013 556POD49 <sup>(2)</sup>	3928013 556POD49 <sup>(2)</sup>	3928013 /
190-250 V AC	3P+N+E +	3924017 /	3924017 596M6	3924017 596E6M63 <sup>(1)</sup>	3924017 556POD49 <sup>(2)</sup>	3928017 556POD49 <sup>(2)</sup>	3928017 /
380-440 V AC							

<sup>(1)</sup> M63 threading - <sup>(2)</sup> Gland size 45-49 mm.

The main catalogue contains all the available contacts configurations.

# 200 A



**U MAX**  
750 V

## DECONTACTOR™ SWITCH + SOCKET-OUTLET

### DX2



<sup>(a)</sup> Flexible. <sup>(b)</sup> Stranded.

⊕ II 2 G D Ex de IIC T3 tD A21 T91°C



Voltages	Pole configuration	Wall mounting socket	Coupler socket	Plug
380-440 V AC	3P+E + accessories	2674013 267AB53 <sup>(1)</sup>	2674013 267A963 <sup>(1)</sup>	2671013 <sup>(1)</sup> /
380-440 V AC	3P+N+E + accessories	2674017 267AB53 <sup>(1)</sup>	2674017 267A963 <sup>(1)</sup>	2671017 <sup>(1)</sup> /

<sup>(1)</sup> Gland size 36-48 mm.

The main catalogue contains all the available contacts configurations.

#### ACCESSORIES AND OPTIONS

DECONTACTOR™	Locking pin for 2 padlocks 8 mm (padlocks not supplied)	Inlet cap IP66/IP67	Inlet cap IP65
DS2	Socket ref. + 453	392A426	/
DX2	Included	/	267A926

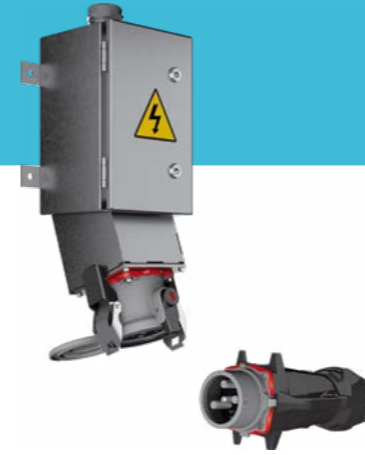


# 400 A



**U MAX**  
1 000 V

## DS4



<sup>(a)</sup> Flexible. <sup>(b)</sup> Stranded.

**i** You will find all the references in the main catalogue or [marechal.com](http://marechal.com).

- ▶ Automatic IP66/IP67
- ▶ Metal casing (IK10) with epoxy paint
- ▶ With a safety shutter 3P+E +2 pilots

# 660 A



**U MAX**  
1 100 V

## P66



**i** You will find all the references in the main catalogue or [marechal.com](http://marechal.com).

- ▶ I<sub>max</sub>: 660 A
- ▶ U<sub>max</sub>: 1,100 V AC/1,500 V DC
- ▶ Frequency: ≤ 500 Hz
- ▶ Number of contacts: 4P+E
- ▶ Number of operations: 2,000
- ▶ Copper-free aluminium alloy enclosure



# 400 A



U MAX  
500 V

## SINGLE POLE CONNECTORS



### DSP400

- 50-240 mm<sup>2</sup> <sup>(a)</sup>  
70-300 mm<sup>2</sup> <sup>(b)</sup>
- 2 PILOTS
- IP66/IP67
- POLY > IK09  
METAL > IK10
- 40°C  
+60°C

<sup>(a)</sup> Flexible. <sup>(b)</sup> Stranded.

*i* You will find all the references in the main catalogue or [marechal.com](http://marechal.com).

- ▶ Automatic IP66/IP67
- ▶ Electromechanical interlocking system
- ▶ Phases visual and mechanical coding
- ▶ Padlocking option

# 800 A



U MAX  
1 000 V

## SINGLE POLE CONNECTORS



### SP

- Available in 680 A
- 50-630 mm<sup>2</sup> <sup>(a)</sup>  
70-630 mm<sup>2</sup> <sup>(b)</sup>
- 2 PILOTS
- IP66/IP67
- POLY
- IK08
- 40°C  
+60°C

<sup>(a)</sup> Flexible. <sup>(b)</sup> Stranded.

*i* You will find all the references in the main catalogue or [marechal.com](http://marechal.com).

- ▶ Automatic IP66/IP67 water-and dust-tight
- ▶ Electromechanical interlocking system
- ▶ Phases visual and mechanical coding
- ▶ Padlocking option
- ▶ Optional operation lever

# 500 A



U MAX  
1 000 V

## SINGLE POLE CONNECTORS



### CS1000

- 50-300 mm<sup>2</sup> <sup>(a)</sup>  
70-400 mm<sup>2</sup> <sup>(b)</sup>
- IP66/IP67
- POLY
- IK08
- 40°C  
+60°C

<sup>(a)</sup> Flexible. <sup>(b)</sup> Stranded.

*i* You will find all the references in the main catalogue or [marechal.com](http://marechal.com).

- ▶ Automatic IP66/IP67
- ▶ Visual and mechanical coding
- ▶ Padlocking option

# 1250 A



U MAX  
1 000 V

## SINGLE POLE CONNECTORS



### DSP1250

- 50-630 mm<sup>2</sup> <sup>(a)</sup>  
70-630 mm<sup>2</sup> <sup>(b)</sup>
- 2 PILOTS
- IP66/IP67
- METAL
- IK10
- 40°C  
+60°C

<sup>(a)</sup> Flexible. <sup>(b)</sup> Stranded.

*i* You will find all the references in the main catalogue or [marechal.com](http://marechal.com).

- ▶ Automatic IP66/IP67 water-and dust-tight
- ▶ Electromechanical interlocking system
- ▶ Phases visual and mechanical coding
- ▶ Padlocking option



# 7 CONTACTS



**U MAX**  
500 V

# MULTICONTACT

25 A

## PN7C



<sup>(a)</sup> Flexible. <sup>(b)</sup> Stranded.



Voltages	Pole configuration	Socket-outlet	Inclined socket	Wall mounting socket	Coupler socket	Plug	Appliance inlet
500 V AC	<b>POLY</b> 7 pin + accessories	01P4061 /	01P4061 511M3	01P4061 511B3M20 <sup>(1)</sup>	01P4061 511P0D18AG <sup>(2)</sup>	01P8061 511P0D18AG <sup>(2)</sup>	01P8061 /
480 V AC	<b>METAL</b> 7 pin + accessories	09P4061 /	09P4061 591M3	09P4061 591C4M20 <sup>(1)</sup>	09P4061 591P020M <sup>(3)</sup>	09P8061 591P020M <sup>(3)</sup>	09P8061 /

<sup>(1)</sup> M20 threading - <sup>(2)</sup> Gland size 9-18 mm. <sup>(3)</sup> Gland size 7-13 mm.

# 12 CONTACTS



**U MAX**  
480 V

# MULTICONTACT

16 A

## PN12C



<sup>(a)</sup> Flexible.



Voltages	Pole configuration	Socket-outlet	Inclined socket	Wall mounting socket	Coupler socket	Plug	Appliance inlet
480 V AC	<b>POLY</b> 12 pin + accessories	01A4001 /	01A4001 511M3	01A4001 511B3M20 <sup>(1)</sup>	01A4001 511P0D18AG <sup>(2)</sup>	01A8001 511P0D18AG <sup>(2)</sup>	01A8001 /
480 V AC	<b>METAL</b> 12 pin + accessories	09A4001 /	09A4001 591M3	09A4001 511B3M20 <sup>(1)</sup>	09A4001 591P020M <sup>(3)</sup>	09A8001 591P020M <sup>(3)</sup>	09A8001 /

<sup>(1)</sup> M20 threading - <sup>(2)</sup> Gland size 9-18 mm. <sup>(3)</sup> Gland size 7-13 mm.

### ACCESSORIES AND OPTIONS



PRODUCT	Locking with padlock Ø 4 mm (padlocks not supplied)	Inlet cap	180° Opening lid	Self-returning lid (without full closure IP40)	Bag of 13 females/males contacts
PN7C	Socket ref. + 843	01NA426	Socket ref. +10	Socket ref. + R	/
PN12C	Socket ref. + 843	01NA426	Socket ref. +10	Socket ref. + R	01AA213 /01AA113

# 12 CONTACTS



**U MAX**  
480 V

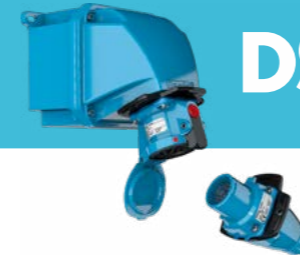
# MULTICONTACT

16 A

## DSN12C



<sup>(a)</sup> Flexible.



Voltages	Pole configuration	Socket-outlet	Inclined socket	Wall mounting socket	Coupler socket	Plug	Appliance inlet
480 V AC	12 pin + accessories	61A4001 /	61A4001 511M3	61A4001 511C7000 <sup>(1)</sup>	61A4001 511P0D18 <sup>(2)</sup>	61A8001 511P0D18 <sup>(2)</sup>	61A8001 /

<sup>(1)</sup> M20 threading - <sup>(2)</sup> Gland size 9-18 mm.

# 24/37 CONTACTS



**U MAX**  
480 V

# MULTICONTACT

16 A

## DSN24C DSN37C



<sup>(a)</sup> Flexible.



Voltages	Pole configuration	Socket-outlet	Inclined socket	Wall mounting socket	Coupler socket	Plug	Appliance inlet
480 V AC	24 pin + accessories	61B4002 /	61B4002 512M3	61B4002 512C7000 <sup>(1)</sup>	61B4002 512P0D21AG <sup>(2)</sup>	61B8002 512P0D21AG <sup>(2)</sup>	61B8002 /
480 V AC	37 pin + accessories	61C4003 /	61C4003 513M3	61C4003 513C7000 <sup>(1)</sup>	61C4003 513P0D30AG <sup>(3)</sup>	61C8003 513P0D30AG <sup>(3)</sup>	61C8003 /

<sup>(1)</sup> Without threading - <sup>(2)</sup> Gland size 5-21 mm. <sup>(3)</sup> Gland size 10-30 mm.

### ACCESSORIES AND OPTIONS



PRODUCT	Locking pin for 2 padlocks Ø 8 mm (padlocks not supplied)	Inlet cap IP66/IP67	In-line connections (a pair of finger draw plates to aid closing)	Self-returning lid (without full closure IP40)	Bag of 13 females/males contacts
DSN12C	Socket ref. + 843	611A426	611A346	Socket ref. + R	01AA213/01AA113
DSN24C	Socket ref. + 843	613A426	613A346	Socket ref. + R	01AA213/61CA113
DSN37C	Socket ref. + 843	616A426	616A346	Socket ref. + R	01AA213/61CA113

**MAKING  
MOBILITY SAFE**

**20 A/32 A**

**U MAX  
480 V**

**RETTBOX® S**



**AUTOMATIC  
ELECTROMECHANICAL SELF-EJECTION**



**i** You will find all the references in the main catalogue or [marechal.com](http://marechal.com).

- ▶ Compact, including load-breaking, self-ejecting socket-outlet for mobile applications
- ▶ Power supply of an auxiliary battery charger for all equipment on-board a vehicle.
- ▶ Reinforced thermoplastics box with 7 contacts and a 12 V/24 V solenoid coil used to eject the mobile socket-outlet upon starting of the vehicle.
- ▶ Voltage presence and battery charging light indicators.
- ▶ **Air feeding duct in option**



**SAFE**

RETTBOX® S is the perfect response to your day-to-day safety requirements, automatically disconnecting the power supply when the vehicle is started.

**SIMPLE**

RETTBOX® S has been designed to make installation easy for you, and can be handled with one hand, whether you're a user, installer or body builder.

**SMART**

RETTBOX® S has been designed to meet your space and design constraints, thanks to the the symmetry of its plate and its thinness.



U MAX 750 V



**B2X**

- Contact us to configure the box that meets your needs.
- You will find all the references in the main catalogue or marechal.com.

- ▶ **Ex** II 2 G D Ex e IIC Gb, Ex tb IIIC Db
- ▶ Intrinsic safety capability
- ▶ IP66/IP67 Water-and dust-tight
- ▶ POLY casing, exists with hinges
- ▶ With Ex e certified terminals
- ▶ Terminals configurations for 25 A, 32 A, 45 A and 63 A
- ▶ Dimensions 120x120x90 mm or 160x160x90 mm



## JUNCTION BOXES



- ▶ **Ex** Ex eb IIC Gb, Ex tb IIIC Db
- ▶ Intrinsic safety capability
- ▶ IP66 Water-and dust-tight
- ▶ Multi-contact connectors and socket-outlets on the same enclosure
- ▶ Socket-outlets configurations up to 680 A
- ▶ POLY casing, aluminium, stainless steel 316L
- ▶ From -55 °C to +60 °C



U MAX 1000 V



**MXBS**

- Contact us to configure the box that meets your needs.
- You will find all the references in the main catalogue or marechal.com.



**CONTROL STATIONS,  
FLAMEPROOF ENCLOSURES,  
LED LIGHTING...**

## DEFINITIONS

<b>Ingress protection</b> according to IEC/EN 60529	<b>1<sup>st</sup> digit: protection against solid foreign objects</b> 2 = protection against dangerous live parts with a finger 4 = protection against dangerous live parts with a wire of a diameter superior or equal to 1mm 5 = protection against dust 6 = dustproof	<b>2<sup>nd</sup> digit: protection against ingress of water</b> 4 = protection against water splashes 5 = protection against water jets 6 = protection against powerful water jets (fire hose) 7 = protection against a 30-minutes immersion up to 1m 8 = protection against a prolonged immersion for a determined period 9 = protection against high pressure water jets at high temperature
<b>Index of resistance to mechanical shocks</b> according to IEC/EN 62262	IK08 = withstands a shock of 1.7 kg to 30 cm (5 joules) IK09 = withstands a shock of 5 kg to 20 cm (10 joules) IK10 = withstands a shock of 5 kg to 40 cm (20 joules)	
<b>Switching capacity</b> according to IEC/EN 60947-3	AC-21 = Resistive on load breaking (simple switchgear, lighting) AC-22 = Mix resistive and inductive on load breaking AC-23 = High inductive on load breaking (motor) AC-3 = Start And Switching Off - Squirrel Cage Motors	
<b>Pilot and auxiliary</b>	<p><b>Pilot</b> A pilot circuit is meant to electrically control a switchgear that energizes/ de-energizes a socket-outlet after plugging, and before unplugging an apparatus, to protect the operator. This switchgear is controlled:</p> <ul style="list-style-type: none"> <li>• by means of a microswitch located inside the socket-outlet (non-crossing pilot circuit), mechanically operated by the plug;</li> <li>• by means of a contact or a pair of contacts, plug side and socket-outlet side (crossing pilot circuit), that make last and break first (LIFO: last-in/first-out), integrated in the control circuit.</li> </ul> <p><b>Auxiliaries</b> Additional to the main contacts, auxiliary contacts are located plug side and socket-outlet side, and are intended for signal, communication, thermistor, etc.</p>	

## HAZARDOUS AREA CERTIFICATION

<b>ATEX</b>	Certification according to European directive 2014/34/EU on all equipments used in or related to explosive atmospheres.		
<b>IECEX</b>	Complying with international standards for electrical and non-electrical equipment for use in potentially explosive atmosphere areas.		
<b>Presence of potentially explosive atmosphere</b>	<b>Permanent</b>	<b>Occasional</b>	<b>Rare</b>
Zoning for gas & vapours	Zone 0	Zone 1	Zone 2
Zoning for dust & fiber	Zone 20	Zone 21	Zone 22

■ Performance level of MARECHAL® devices.



**THE SWITCH-RATED  
DECONTACTOR™  
GUARANTEES THE BEST LEVEL  
OF SAFETY.**