

GAS GROUP IIC

CPS../EMH.. Series enclosures - Aluminium

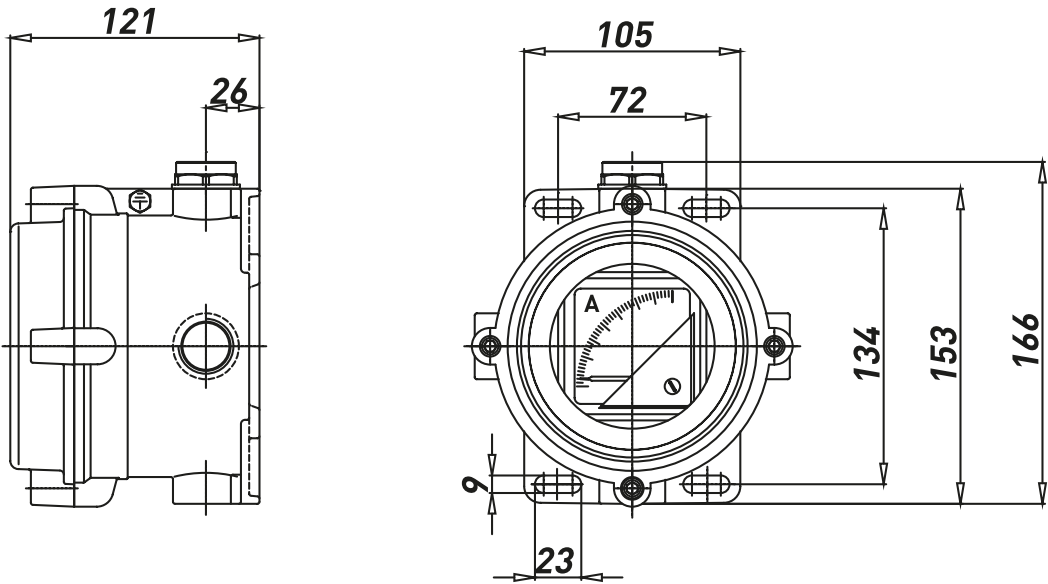


CPS/EMH.. series instrument housings are based on the features of our CPS.. boxes and offer Ex d IIC mode of protection. They are suitable for hazardous areas of industrial plants for indoor and outdoor applications.

TECHNICAL FEATURES

Material	Aluminium with low content of copper
IP rating	IP66
Ambient temperature range	-50°C to + 55°C (ATEX) -60°C to +60°C (IECEX)
Approvals	Certified 03ATEX0009 IECEX BKI 15.0002 TR CU
Marking	II 2 GD Ex d IIC T(*) Gb Ex tb IIIC T(*) Db IP66 Ex db IIC T6/T5/T4 * T6/T85°C, T5/T100°C, T4/T135°C
Surface treatment	Green colour polyurethane painting cycle RAL6003 (other colour available upon request)
Entries	Metric pitch 1.5, ANSI B1.20.1 NPT, UNI-6125
Standard certificate label	Made by self adhesive UV and corrosion resistant polyester, approved by certified Laboratory.

Dimensions CPS../EMH..



CPS../EMH.. enclosures

CODE RAL6003	TYPE	WINDOW DIAMETER	WEIGHT [Kg]
B070109010021	EMH-90 M25X1,5	90	1.40
B070109011021	EMH-90 3/4" NPT	90	1.40

Ammeter / Voltmer available on request.