

## GAS GROUP IIC

# GUB/EMH.. Series enclosures - Aluminium

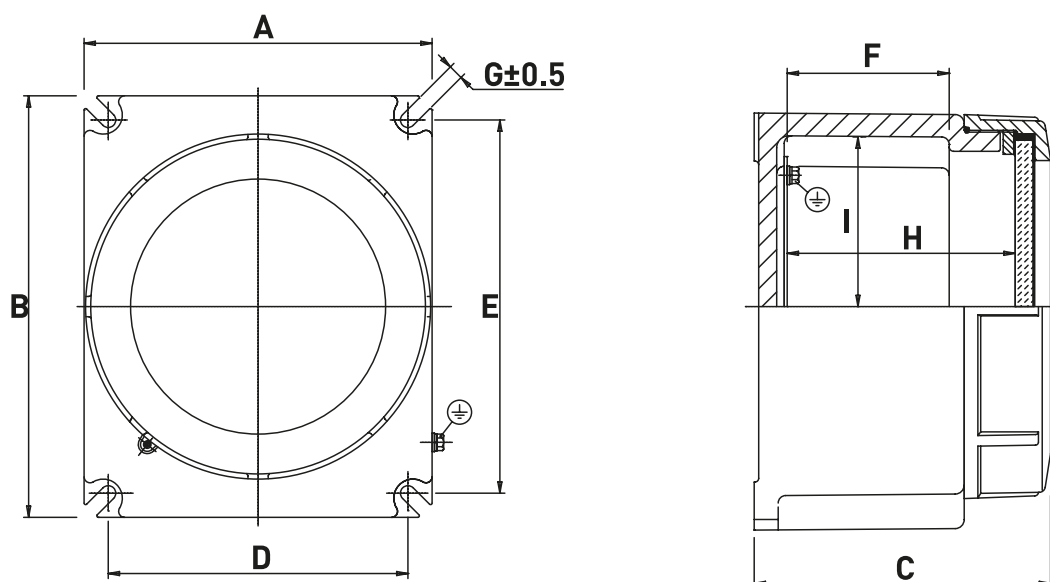


GUB/EMH.. series instrument housings are based on the features of our GUB.. enclosures and offer Ex d IIC mode of protection. They are suitable for hazardous areas of industrial plants for indoor and outdoor applications.

## TECHNICAL FEATURES

<b>Material</b>	Aluminium with low content of copper Stainless steel AISI 316 L (upon request) The sides A,B & C can be increased/decrease of 10%
<b>IP rating</b>	IP66
<b>Ambient temperature range</b>	-50°C to +55°C (ATEX) -60°C to +60°C (IECEX)
<b>Approvals</b> (Complete enclosures)	Certified 00ATEX0033X IECEX BKI 15.0003 TR CU
<b>Marking</b>	II 2 GD Ex d IIC T(*) Gb Ex tb IIIC T(*) Db IP66 * T6/T85°C, T5/T100°C, T4/T135°C
<b>Surface treatment</b>	Green colour polyurethane painting cycle RAL6003 (other colour available upon request)
<b>Entries</b>	Metric pitch 1.5, ANSI B1.20.1 NPT, UNI-6125
<b>Standard certificate label</b>	Made by self adhesive UV and corrosion resistant polyester, approved by certified Laboratory.
<b>Accessories available upon request</b>	Drain/breather valve Internal anticondensate painting Traffolyte/Stainless steel certificate label

## Dimensions GUB/EMH..



### GUB/EMH.. Series enclosures c/w internal mounting plate - Aluminium

TYPE	DIMENSIONS [mm]							WINDOW DIAMETER	WEIGHT [Kg]
	A	B	C	D	E	F	H		
EMH-160 + PS	210	210	160	180	180	78	115	155	6.00
EMH-175 + PS	232	281	185	202	251	97	141	170	8.90
EMH-200 + PS	257	298	200	227	268	106	150	195	11.90
EMH-230 + PS	295	330	236	259	295	140	189	230	15.80

For complete junction boxes is necessary to ask to the Sales Office.

### Maximum number of entries on sides A/B under ATEX directive

TYPE	EMH-160	EMH-175	EMH-200	EMH-230
M20 / 1/2"	5/5	5/7	7/9	7/9
M25 / 3/4"	5/5	5/7	7/9	7/9
M32 / 1"	3/3	5/5	5/7	5/7
M50 / 1" 1/2	2/2	2/3	2/3	3/5
M63 / 2"	1/1	2/2	2/2	2/3
M75 / 2" 1/2	-	1/2	1/2	2/2
M80 / 3"	-	1/1	1/2	1/2