

## FLAMEPROOF

# CP../CPS.. Series junction boxes



The CP../CPS.. range of enclosures, used for terminals wiring, grants Ex d or Ex e mode of protection.

Boxes are manufactured in aluminium with low content of copper and complete with threaded hubs suitable for cable glands or conduit, connection does not affect the internal void, which remains available for terminals wiring.

Internal and external screws are made of AISI316 stainless steel.

This series is tailor made on the base of customer specification, including quantity and type of operators.

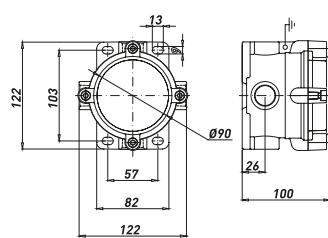
Based on the customer's needs and certificate requirements, our technical department will advise and select the most suitable combination.

These boxes are suitable for hazardous areas of industrial plants for indoor and outdoor applications.

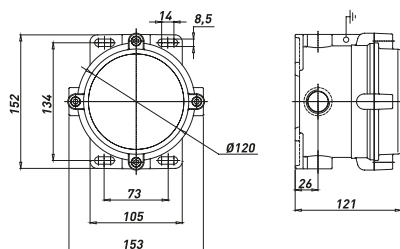
## TECHNICAL FEATURES

<b>Material</b>	Aluminium with low content of copper
<b>IP rating</b>	IP66
<b>Ambient temperature range</b>	-50°C to +60°C (ATEX) -60°C to +60°C (IECEX)
<b>Approvals</b>	Certified 03ATEX0009 IECEX BKI 15.0002 TR CU
<b>Marking</b>	STANDARD II 2 GD Ex d IIC T(*) Gb Ex tb IIIC T(*) Db IP66 * T6/T85°C, T5/T100°C, T4/T135°C  II 2 GD Ex e IIC T(*) Gb Ex t IIIC T(*) Db IP66 * T6/T85°C, T5/T100°C
<b>Surface treatment</b>	Painted by green colour polyurethane painting cycle RAL6003 (other colour available upon request)
<b>Thread</b>	Metric pitch 1.5, ANSI B1.20.1 NPT, UNI-6125
<b>Standard certificate label</b>	Made by self adhesive UV and corrosion resistant polyester, approved by certified Laboratory.
<b>Accessories available upon request</b>	Internal anticondensate painting Traffolyte/Stainless steel certificate label Terminals
<b>Maximum number of terminals</b>	(15 x 2,5 mm <sup>2</sup> / 12 x 4 mm <sup>2</sup> / 8 x 6 mm <sup>2</sup> )

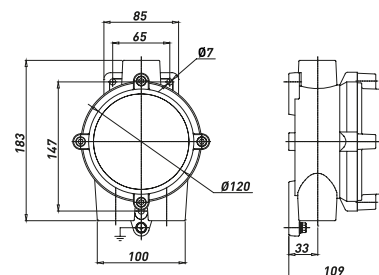
## Dimensions CP../CPS..



CPC/CPT/CPX



CPSC/CPST/CPSX



CPSG

### CP.. Series (Selection table)

N° OF ENTRIES		TYPE
2		CPC-26 2XM25
		CPC-26 2X3/4" GK
		CPC-26 2X3/4" NPT
3		CPT-26 3XM25
		CPT-26 3X3/4" GK
		CPT-26 3X3/4" NPT
4		CPX-26 4XM25
		CPX-26 4X3/4" GK
		CPX-26 4X3/4" NPT

For complete junction boxes is necessary to ask to the Sales Office.

### CPS.. Series (Selection table)

N° OF ENTRIES		TYPE
2		CPSC 2XM25
		CPSC 2XM32
		CPSC 2X3/4" GK
		CPSC 2X3/4" NPT
		CPSC 2X1" GK
		CPSC 2X1" NPT
3		CPST 3XM25
		CPST 3XM32
		CPST 3X3/4" GK
		CPST 3X3/4" NPT
		CPST 3X1" GK
		CPST 3X1" NPT
3		CPSG 3XM25
		CPSG 3XM32
		CPSG 3X3/4" GK
		CPSG 3X3/4" NPT
		CPSG 3X1" GK
		CPSG 3X1" NPT
4		CPSX 4XM25
		CPSX 4XM32
		CPSX 4X3/4" GK
		CPSX 4X3/4" NPT
		CPSX 4X1" GK
		CPSX 4X1" NPT

For complete junction boxes is necessary to ask to the Sales Office.