

## WELLGLASS

# Serie EVCC-PR tank inspection lights

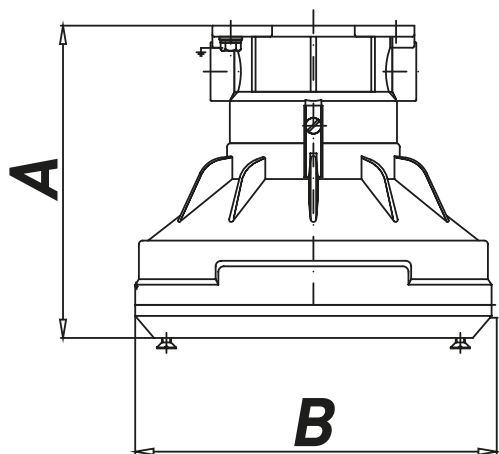


Tank inspection lights suitable for ON-SHORE and OFF-SHORE application by suitable painting cycle (upon request).

## TECHNICAL FEATURES

<b>Material</b>	Aluminium with low content of copper
<b>IP rating</b>	IP66
<b>Ambient temperature range</b>	-52°C to +60°C
<b>Approvals</b>	Certified 01ATEX0019X (standard) IECEX INE 15.0031X TR CU (marking upon request, ordering code to be required)
<b>Marking</b>	II 2 GD Ex d IIC T3 Gb Ex tb IIIC T200°C Db IP66
<b>Gaskets</b>	O-ring made of Nitrile Rubber (NBR)
<b>Surface treatment</b>	Green colour polyurethane painting cycle RAL6003 (other colour available upon request)
<b>Entries</b>	N° 2 entries M25x1,5 (plugs and cable glands excluded)
<b>Hardware and screws</b>	AISI304 Stainless steel external hardware and screws
<b>Lamps</b>	Included
<b>Rated operation voltage (UE)</b>	230V (standard) 220V, 240V (marking upon request)
<b>Frequency</b>	50/60 Hz
<b>Accessories available upon request</b>	Fixing flange for porthole

## Dimensions EVCC-PR



## (EVCC-PR) Tank inspection lights

TYPE	CODE	LAMP [W]	WEIGHT [Kg]	TEMP. CLASS	DIMENSIONS [mm]	
					A	B
EVCC-PR2/HA 42	A044621E2171D	42	3.10	T4	153	165
EVCC-PR3/HA 53	A044631F3171D	53	4.40	T4	170	195