



LED LIGHTING

LED EVCC-PR Series tank inspection lights

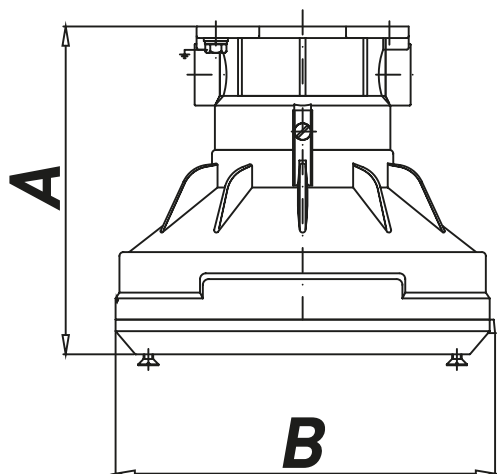


Tank inspection lights suitable for ON-SHORE and OFF-SHORE application by suitable painting cycle (upon request); LED version.

TECHNICAL FEATURES

Material	Aluminium with low content of copper
IP rating	IP66
Ambient temperature range	-52°C to +60°C
Approvals	Certified 01ATEX0019X (standard) TR CU (marking upon request, ordering code to be required) IECEX INE 15.0031X
Marking	II 2 GD Ex d IIC T3 Gb Ex tb IIIC T200°C Db IP66
Gaskets	O-ring made of Nitrile Rubber (NBR)
Surface treatment	Green colour polyurethane painting cycle RAL6003 (other colour available upon request)
Entries	N° 2 entries M25x1,5 (plugs and cable glands excluded)
Hardware and screws	AISI304 Stainless steel external hardware and screws
Lamps	Included
Rated operation voltage (UE)	230 V
Frequency	50/60 Hz
Accessories available upon request	Fixing flange for porthole

Dimensions LED EVCC



LED EVCC-PR tank inspection lights

TYPE	CODE	LAMP [W]	WEIGHT [Kg]	TEMP. CLASS	DIMENSIONS [mm]	
					A	B
EVCC-PR3/LED 7	A047631071G14	7	4.40	T3	170	195