

FLAMEPROOF

CP../EFSRC.. Series selector switches



The CP../EFSRC.. range of control stations are based on the features of our CP../CPS.. enclosures, offer an Ex d IIC mode of protection and they can be equipped with different components (push button, selector switches, potentiometers, signal lamps, rotary handles, ammeters, voltmeters, etc.)

Boxes are manufactured in aluminium with low content of copper and complete with threaded hubs suitable for cable glands or conduit, connection does not affect the internal void, which remains available for terminals wiring.

Internal and external screws are made of AISI316 stainless steel.

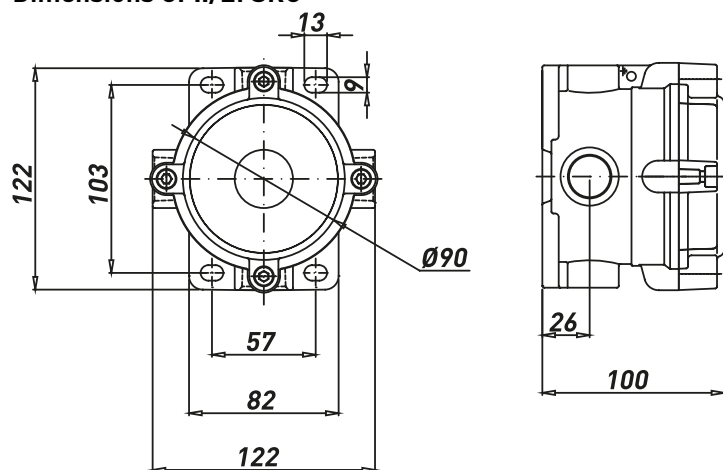
This series is tailor made on the base of customer specification, including quantity and type of operators. Based on the customer's needs and certificate requirements, our technical department will advise and select the most suitable combination.

These boxes are suitable for hazardous areas of industrial plants for indoor and outdoor applications.

TECHNICAL FEATURES

Material	Aluminium with low content of copper
IP rating	IP66
Ambient temperature range	-50°C to +60°C (ATEX) -60°C to +60°C (IECEX)
Approvals	Certified 03ATEX0009 IECEX BKI 15.0002 TR CU
Marking	II 2 GD Ex d IIC T(*) Gb Ex t IIIC T(*) Db IP66 * T6/T85°C, T5/T100°C, T4/T135°C
Surface treatment	Painted by green colour polyurethane painting cycle RAL6003 (other colour available upon request)
Thread	Metric pitch 1.5, ANSI B1.20.1 NPT, UNI-6125
Standard certificate label	Made by self adhesive UV and corrosion resistant polyester, approved by certified Laboratory.
Accessories available upon request	Internal anticondensate painting Traffolyte/Stainless steel certificate label Hot deep galvanized steel or Stainless Steel AISI316 stand / canopy.

Dimensions CP../EFSRC



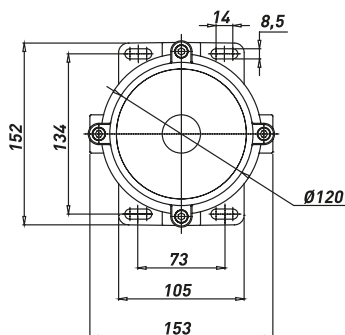
CPC/CPT/CPX EFSRC-1

CP../EFSRC Series push button stations (Selection table - empty boxes)

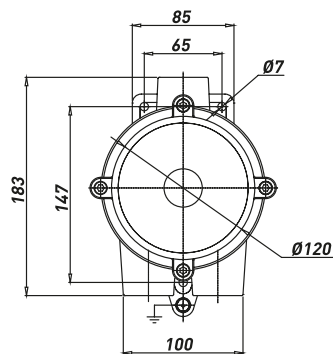
N° OF ENTRIES		TYPE
2		CPC-26 2XM25
		CPC-26 2X3/4"GK
		CPC-26 2X3/4"NPT
3		CPT-26 3XM25
		CPT-26 3X3/4"GK
		CPT-26 3X3/4"NPT
4		CPX-26 4XM25
		CPX-26 4X3/4"GK
		CPX-26 4X3/4"NPT

* For complete push button stations is necessary to ask to the Sales Office.

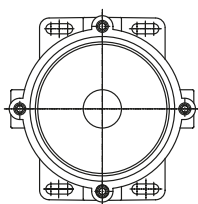
Dimensions CPS../EFSRC



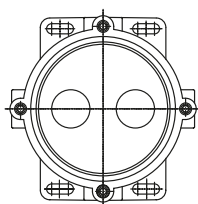
CPSC/CPST/CPSX



CPSG



EFSRC-1



EFSRC-2

CPS../EFSRC Series push button stations (Selection table - empty boxes)

N° OF ENTRIES		TYPE
2		CPSC 2XM25
		CPSC 2XM32
		CPSC 2X3/4" GK
		CPSC 2X3/4" NPT
		CPSC 2X1" GK
		CPSC 2X1" NPT
3		CPST 3XM25
		CPST 3XM32
		CPST 3X3/4" GK
		CPST 3X3/4" NPT
		CPST 3X1" GK
3		CPST 3X1" NPT
		CPSG 3XM25
		CPSG 3XM32
		CPSG 3X3/4" GK
		CPSG 3X3/4" NPT
4		CPSG 3X1" GK
		CPSG 3X1" NPT
		CPSX 4XM25
		CPSX 4XM32
		CPSX 4X3/4" GK
		CPSX 4X3/4" NPT
		CPSX 4X1" GK
		CPSX 4X1" NPT

* For complete push button stations is necessary to ask to the Sales Office.

Boxes takes following suffix:

- EFDCN; if assembled with push buttons, pilot lamps, potentiometer, etc.
- EFSRC; if assembled with step, change-over or selector switches.

CP../CPS.. EFSRC Series complete selector switches

TYPE	CODE	DIAGRAM	ENTRIES	WEIGHT [Kg]	AMBIENT TEMPERATURE
CPC-26/EFSRC-220	B08H315121112		M25X1,5	1.10	(-20°;+40°)
CPC-26/EFSRC-220	B08H315121122		3/4" NPT	1.10	(-20°;+40°)
CPC-26/EFSRC-220	B08H315121132		3/4" UNI-6125	1.10	(-20°;+40°)
CPC-26/EFSRC-320	B08H315131112		M25X1,5	1.15	(-20°;+40°)
CPC-26/EFSRC-320	B08H315131122		3/4" NPT	1.15	(-20°;+40°)
CPC-26/EFSRC-320	B08H315131132		3/4" UNI-6125	1.15	(-20°;+40°)
CPC-26/EFSRC-420	B08H315141112		M25X1,5	1.15	(-20°;+40°)
CPC-26/EFSRC-420	B08H315141122		3/4" NPT	1.15	(-20°;+40°)
CPC-26/EFSRC-420	B08H315141132		3/4" UNI-6125	1.15	(-20°;+40°)
CPSC-26/EFSRC-432	B08K315142112		M25X1,5	1.30	(-20°;+40°)
CPSC-26/EFSRC-432	B08K315142122		3/4" NPT	1.30	(-20°;+40°)
CPSC-26/EFSRC-432	B08K315142132		3/4" UNI-6125	1.30	(-20°;+40°)
CPC-26/EFSRC-D-220	B08H315221112		M25X1,5	1.15	(-20°;+40°)
CPC-26/EFSRC-D-220	B08H315221122		3/4" NPT	1.15	(-20°;+40°)
CPC-26/EFSRC-D-220	B08H315221132		3/4" UNI-6125	1.15	(-20°;+40°)
CPSC-26/EFSRC-D-320	B08K315231112		M25X1,5	1.20	(-20°;+40°)
CPSC-26/EFSRC-D-320	B08K315231122		3/4" NPT	1.20	(-20°;+40°)
CPSC-26/EFSRC-D-320	B08K315231132		3/4" UNI-6125	1.20	(-20°;+40°)
CPC-26/EFSRC-C-220	B08H315321112		M25X1,5	1.15	(-20°;+40°)
CPC-26/EFSRC-C-220	B08H315321122		3/4" NPT	1.15	(-20°;+40°)
CPC-26/EFSRC-C-220	B08H315321132		3/4" UNI-6125	1.15	(-20°;+40°)
CPSC-26/EFSRC-C-320	B08K315331112		M25X1,5	1.30	(-20°;+40°)
CPSC-26/EFSRC-C-320	B08K315331122		3/4" NPT	1.30	(-20°;+40°)
CPSC-26/EFSRC-C-320	B08K315331132		3/4" UNI-6125	1.30	(-20°;+40°)