

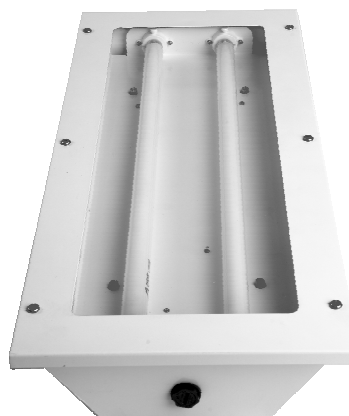
Xena Recessed Fluorescent

IP56

The Xena Ex e recessed fluorescent is designed for use in Zone 1 hazardous areas.

Key Features:

- Shallow body design reduces encroachment in to ceiling void, minimising space requirements
- Self contained battery backup for up to three hours emergency operation
- Optional micro switch to isolate supply when opening cover to allow for safe lamp and battery replacement



Luminaire Ratings

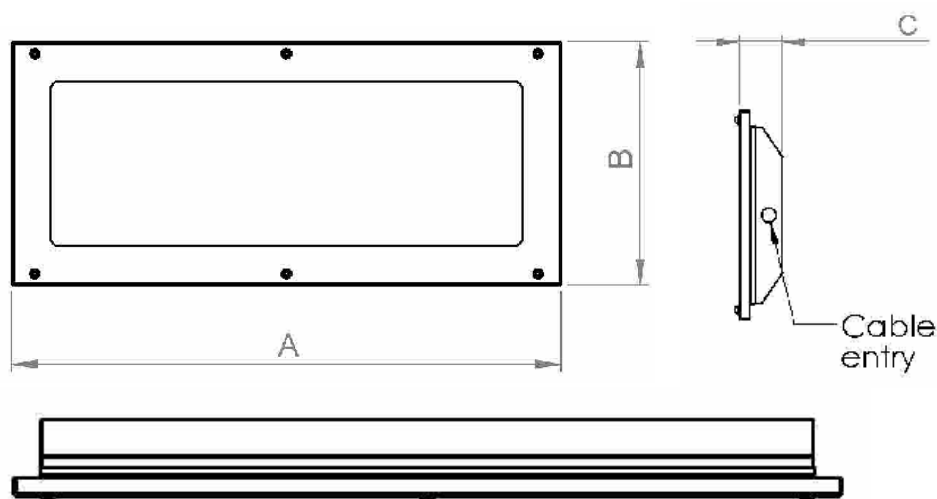
Product Reference	Lamp Type	Lamp Cap	Power (W)	Temperature Rating	Ambient Temperature*	Weight (kg)
LX1XEN218	T8 bi-pin	G13	2 x 18W	T4	-40°C to 55°C	8.9
LX1XEN236	T8 bi-pin	G13	2 x 36W	T4	-40°C to 55°C	13.1
LX1XENE218	T8 bi-pin	G13	2 x 18W	T4	-15°C to 55°C	10.8
LX1XENE236	T8 bi-pin	G13	2 x 36W	T4	-15°C to 55°C	14.9

E – Emergency battery backup version

* Note: the use of fluorescent lamps is not recommended below -20°C

Standard Specifications

Luminaire Type	Zone 1 Recessed Fluorescent Luminaire
Ingress Protection	IP56 to EN60529
Material	Zintec epoxy painted enclosure, toughened glass diffuser and stainless steel fasteners.
Distribution/output	Various options available
Lamp Types	Tubular fluorescent T8 bi-pin lamps
Lamp Cap	G13
Lamp Change	Via front cover
Cable Entry	2 x M20 clearance holes, one at each end. Supplied with 1 x Ex plug and 1 x transit plug
Terminals	Through wire terminal block for up to 6mm ² conductors as standard
Control Gear	HF electronic parallel ballast with EOL protection
Orientation	Ceiling mounted
Mounting	Various attachment & mounting options available
Supply	220 to 254V 50/60Hz ac dc
Emergency Duration	3 hours
Certification	
Area Classification	Zone 1 Gas
Type of Protection	Ex e mb (increased safety, encapsulation)
Apparatus Coding	Standard: II 2 G Ex e mb II T4 Gb / With Isolator: Ex d e mb IIC T4 Gb
Certificate Number	CML 14ATEX3105 / IECEx CML 14.0043



Dimensions			
Type	A	B	C
2 x 18W	700	200- 310	65-120
2 x 36W	1000	200-310	65-120

Emergency versions depth 120mm

Options

M25	M25 cable entries (other thread types available on request)
IS	Isolator switch
110	110 - 130V operation
RALxxx	Specific paint colour (RAL number to be specified)

Add the required suffix to the product reference.

Example: **LX1XENE236110RAL7001** = Zone 1, 2 x 36W with emergency battery backup, 110V ac/dc, painted grey (RAL7001)

Accessories

LX4XEN-SK1	Mounting skirt
LX4XEN-DR	Drop rod attachment points
LX4XEN-SA	Side arm brackets
LX4XEN-PR	Prismatic diffuser
LX4XEN-AG	Anti-glare diffuser



**THORNE &
DERRICK
INTERNATIONAL**

Thorne & Derrick
+44 (0) 191 410 4292
www.powerandcables.com