

# Nimbus Panel Luminaire

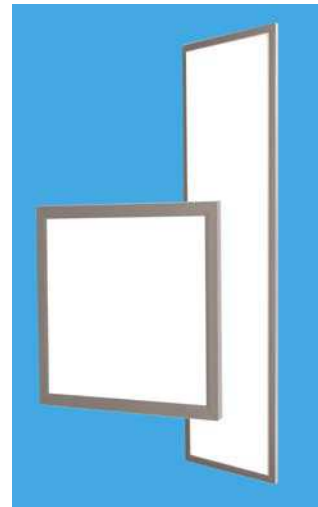


IP44

The Nimbus is a low-profile LED panel. It provides a significant weight and energy saving over a traditional recessed fluorescent.

## Key Features:

- Excellent uniformity and colour rendering
- Dimmable (Push to dim)
- Emergency version with battery status/fault condition indicator and automatic self-testing
- Plug & socket connection between panel and driver for easy installation
- 5-year complete system warranty\*



## Luminaire Ratings

Product Reference	Lamp Type	Dimensions (mm)	Power (W)	Lumen Output	Ambient Temperature
LX2NIM05LB57	LED	150 x 150	13W	730	-20°C to 40°C
LX2NIM11LB57	LED	300 x 300	17W	1,460	-20°C to 40°C
LX2NIM125LB57	LED	275 x 600	20W	2,100	-20°C to 40°C
LX2NIM12LB57	LED	300 x 600	20W	2,100	-20°C to 40°C

Add **E** to the coding for Emergency version e.g. LX2NIM**E**11LB57, standard is the 3-hour version.

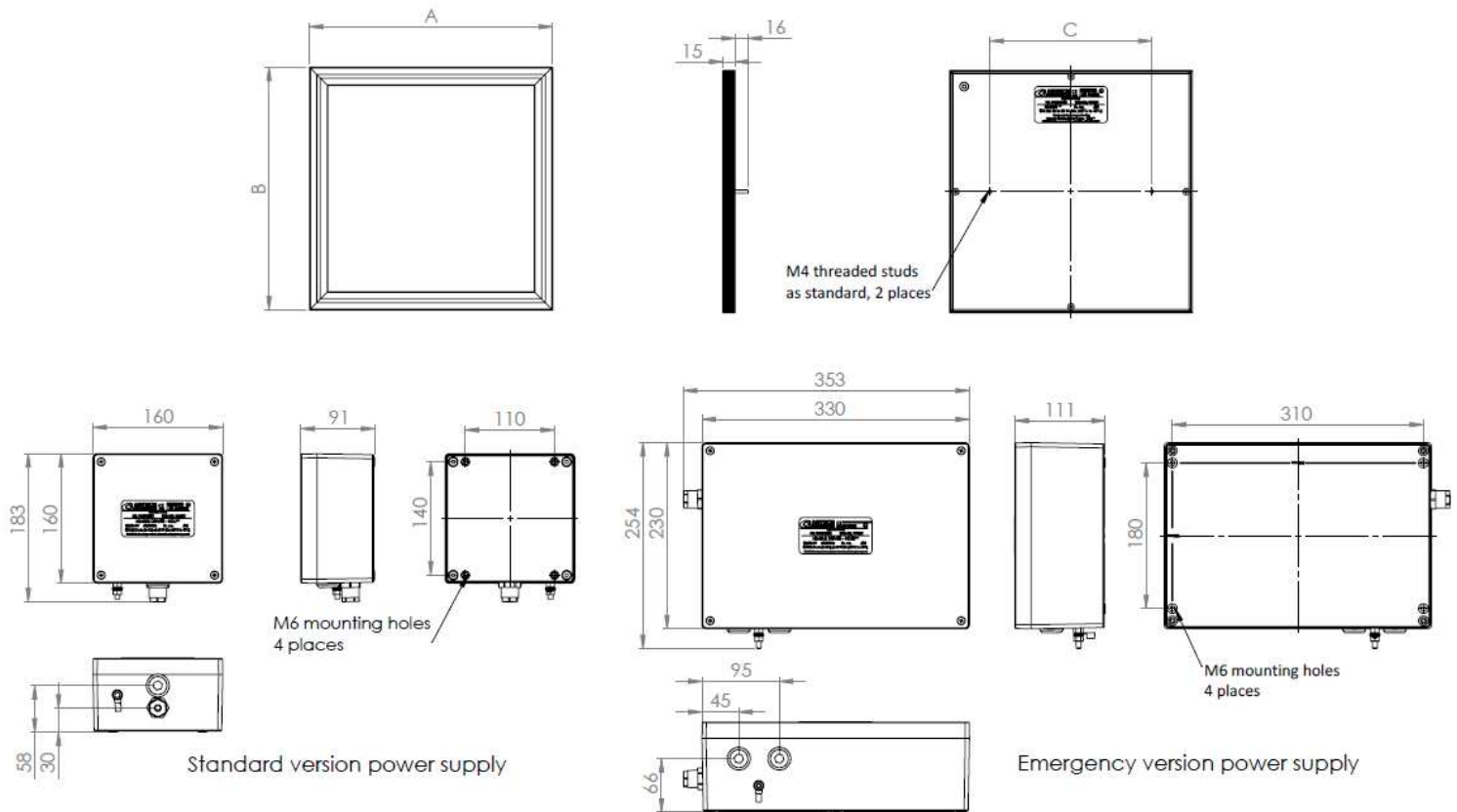
## Standard Specifications

Luminaire Type	LED panel luminaire
Ingress Protection	IP44 Panel, IP66 Driver to EN60529
Material	Panel: Aluminium frame, PMMA diffuser / Driver: Aluminium enclosure
Lamp Type	Light emitting diode, pure white (5700K)
LED Life	50,000 hours L <sub>70</sub> @ 25°C
Colour Rendering Index	CRI 80
Installation Connections	4m flying lead from driver to panel. Cable is fire retardant LSZH to IEC 60331-21 & 31, IEC 60754-1 and IEC 61034-2
Control Gear	Remote HF electronic driver with harmonic protection BS 61000-4-2, 3, 4, 5, 6, 8, 11 and EN 55024, heavy industry level, criteria A. Overvoltage up to 3kVAC.
Dimming	Push to dim: 100% > 75% > 50% > Off
Mounting	Via removable 40mm M4 studs secured on to back plate
Supply	90V to 264V 50/60Hz ac
Emergency Duration	90 minutes at 50% output or 180 minutes at 25% output
Battery	6V 4.5Ah Ni-Cd
Area Classification	Zone 2, Gas
Type of Protection	Panel – Ex ic (intrinsically safe) Driver – Ex ec ib q (increased safety, intrinsically safe, sand filled)
Apparatus Coding	Panel – Ex ic IIC T4 Gc Driver – Ex ec [ic Gc] qc IIC T4 Gc
Certificate Number	CML 16ATEX4300X / IECEx CML 16.0020X

\* Warranty excludes batteries for emergency version

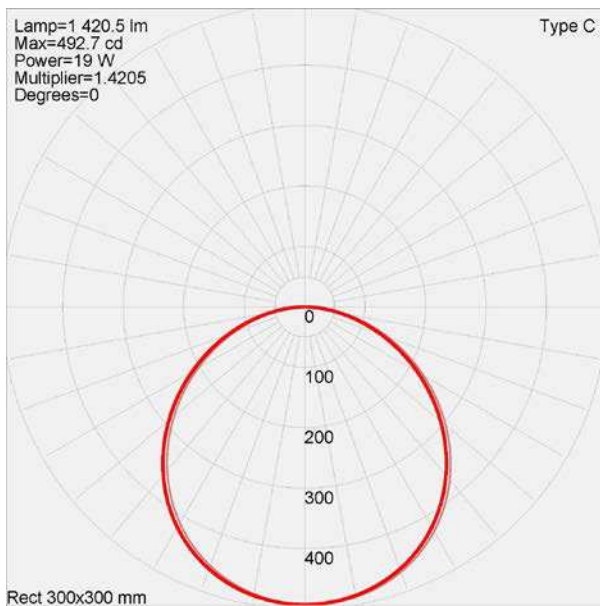
Product design and specifications are subject to change without notice; please check the website for latest specifications

## Luminaire Dimensions



	NIMBUS05	NIMBUS11	NIMBUS125	NIMBUS12
A	150	300	275	300
B	150	300	600	600
C	75	200	400	400

## Photometrics



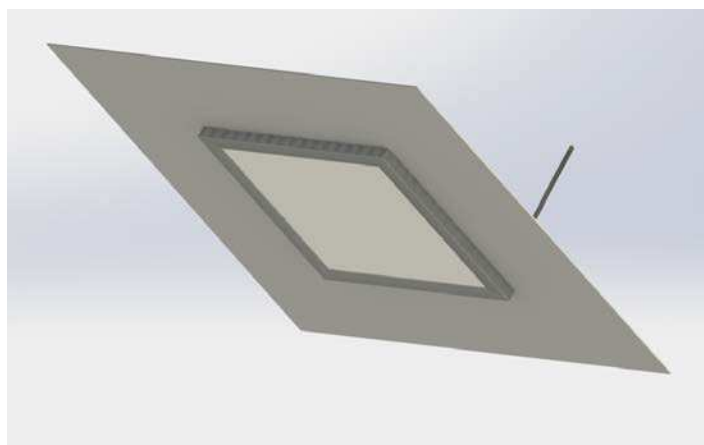
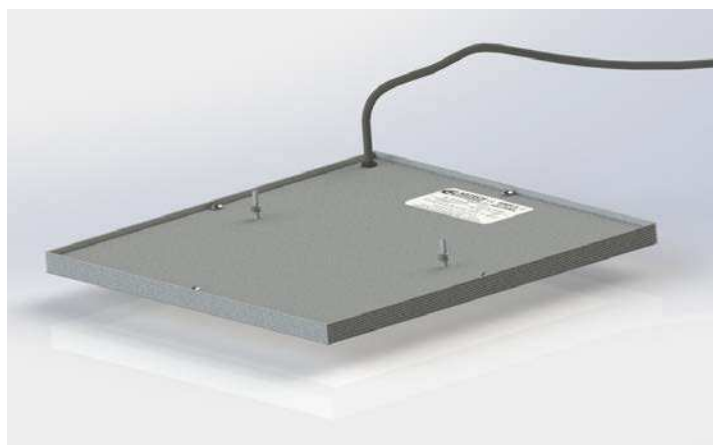
## Options

LB27	Warm white (2700K)
E90	90-minute emergency duration (90 minutes at 50% output)
DS	Dark Start, allows inhibition of battery for use on un-manned platforms
NST	Non self-test emergency version
RAL9016	White panel frame (RAL9016)
FM60	60mm long M4 flush mount studs with backing plate for insulated tile mounting

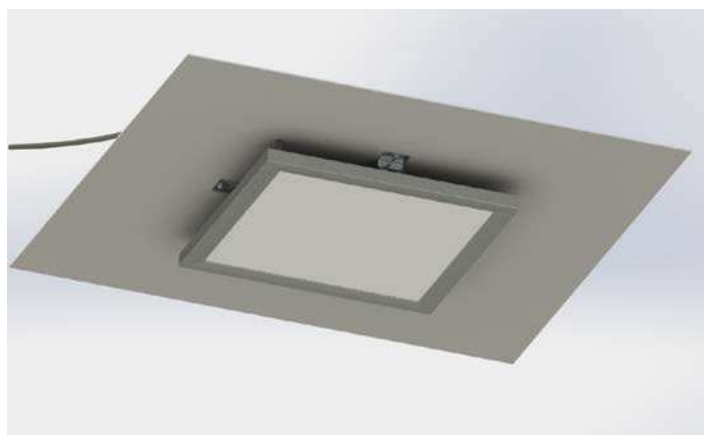
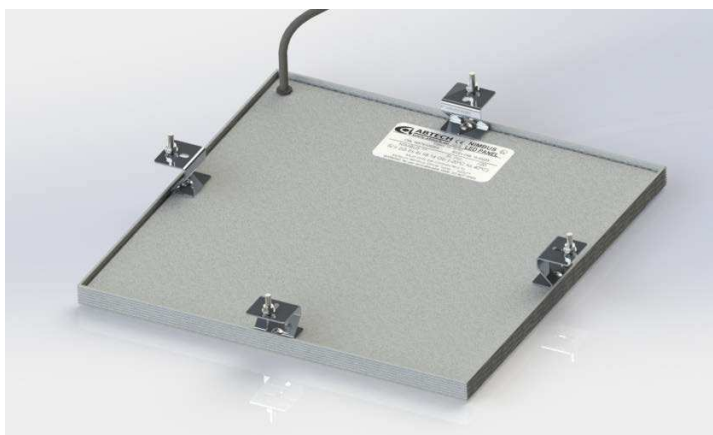
Add the required suffix to the product reference.

Example: **LX2NIM05LB27** = Zone 2, 13W panel with warm white (2700K) LEDs

## Flush Mounted (standard c/w M4 x 40mm studs)



## Stand-Off Bracket Mounted (LX4NIM-SB)



## Control Enclosure Mounting Feet (LX4NIM-EMF)



Set of four stainless steel mounting feet with fixings for attaching to control gear enclosure.



**THORNE &  
DERRICK**  
INTERNATIONAL

**Thorne & Derrick**  
+44 (0) 191 410 4292  
[www.heatingandprocess.com](http://www.heatingandprocess.com)