

Avena Road Lantern

IP66/67

The Avena Ex nR road lantern is designed for use in Zone 2 & 22 hazardous areas. Dependant upon wattage the Avena comes in two sizes making it ideal for roads, walkways and perimeter lighting.

Key Features:

- Efficient optical design and five position lamp adjustment for optimum horizontal distribution
- Internal control gear suitable for both High Pressure Sodium and Metal Halide lamps
- Timed Ignitor as standard



Luminaire Ratings

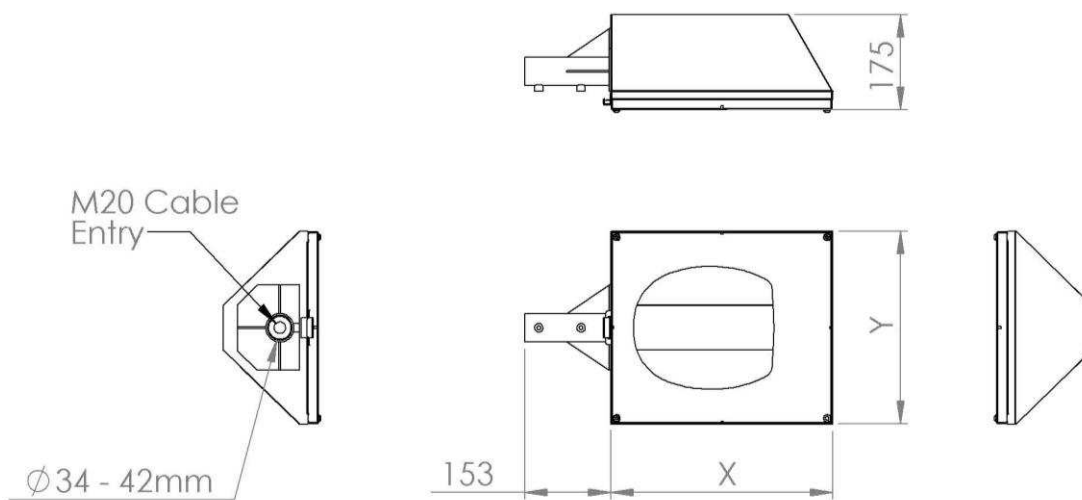
Product Reference	Lamp Type	Lamp Cap	Power (W)	Temperature Rating	Ambient Temperature	Weight (kg)
LX2AVE100SH	HPS or MH	E40	100W	T4	-50 to +55°C	8.5
LX2AVE150SH	HPS or MH	E40	150W	T4	-50 to +55°C	8.5
LX2AVE250SH	HPS or MH	E40	250W	T3	-50 to +55°C	9.8

Standard Specifications

Luminaire Type	Zone 2 road lantern
Ingress Protection	IP65 to EN60529
Material	316 stainless steel body, toughened glass optical chamber, silicone gasket and stainless steel fixings
Distribution/output	Highly efficient optical reflector system with adjustable lamp position
Lamp Types	High Pressure Sodium or Metal Halide
Lamp Cap	E40/ES
Lamp Change	Via front cover
Cable Entry	1 x M20 clearance hole
Terminals	Terminals block for up to 6mm ² conductors
Control Gear	Copper and iron ballast, timed impulse ignitor, pfc capacitor
Orientation	Horizontal, beam down
Mounting	Side arm mounting - Ø34 to Ø42mm pole, other diameters on request
Supply	220 to 254V 50/60Hz ac
Certification	
Area Classification	Zone 2 & 22, Gas and Dust
Type of Protection	Ex nR (restricted breathing)
Apparatus Coding	Ex nR IIC T* Gc, Ex tc IIIC T135°C Dc
Certificate Number	AB 15ATEX4109X

* For T rating and ambient, refer to luminaire table

Luminaire Dimensions



Dimensions		
	X	Y
AVENA100/150	395	345
AVENA250	480	345

Options

60	60Hz ac dc operation
110	110 - 130V operation
IO	Ignitor only (allows for remote mounting of control gear)

Add the required suffix to the product reference.

Example: **LX2AVE150SH60IO** = Zone 2, 150W HPS/MH streetlight with 60Hz operation and remote control gear box

Accessories

N/A	No accessories available for this product
------------	---



**THORNE &
DERRICK
INTERNATIONAL**

Thorne & Derrick
+44 (0) 191 410 4292
www.heatingandprocess.com