

Ex de



Introduction

The signalling bell dGW21 was designed to warn, call and signal in group II explosive atmospheres and rough environmental conditions in hazardous areas.

The signalling bell produces a sound volume of approx. 105dB(A) at 1 meter distance.

The frequency of the sound of the bell is approx 1kHz, meaning the signal can be clearly heard against lower frequency background noise. The bell can also be activated with the presence of a telephone ringing signal in the dRGW 21 version.

The protection of this product is a mixture of Exd "flameproof" for the driver system and Exe "increased safety" for the termination chamber. The dRGW 21 offers initiation by a relay from a telephone ringing voltage. The flameproof chamber contains the electromagnetic driver system and the enclosure is made from GRP (glass-fibre reinforced polyester), guaranteeing protection against corrosion. As the dGW 21 is safety class II, so there is no equipotential bonding necessary.

All D.C. versions are also equipped with an electronic contact breaker, increasing product service life.

Features

- ATEX II 2 G Ex de IIC T6
- Housing made of glass-fibre reinforced polyester (GRP)
- Volume: approx: 105 dB(A)
- Protection: IP 66
- Safety class II
(no equipotential bonding necessary)
- Version dRGW 21 with integrated telephone call relay
- Integrated terminal box realized in Ex protection mode increased safety

Acoustic signalling device in a chemical plant

The frequency of the sound of the bell is approx 1kHz, meaning the signal can be clearly heard against lower frequency background noise.

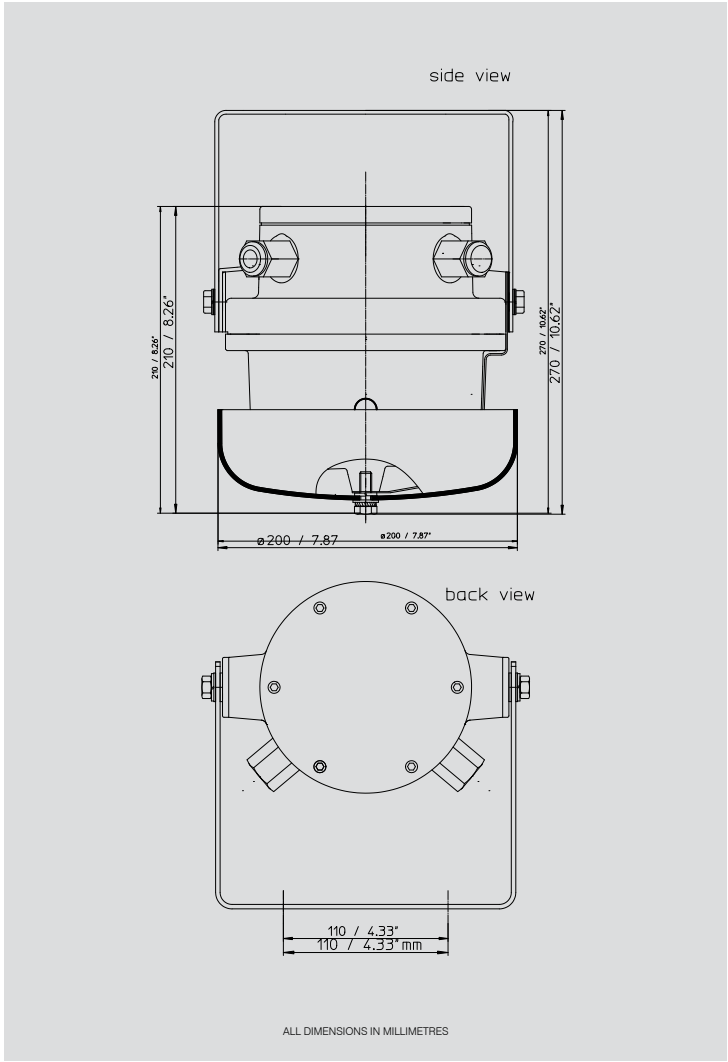


**THORNE &
DERRICK**
INTERNATIONAL

Thorne & Derrick
+44 (0) 191 410 4292
www.powerandcables.com

Certification and Specification

| | |
|-----------------------|--|
| Explosion Protection: | II 2 G Ex de IIC T6. |
| Protection: | IP 66. |
| Safety class: | II (no equipotential bonding necessary). |
| Housing: | GRP glass-fibre reinforced polyester. |
| Colour: | Black or red. |
| Cable gland: | 1x M20 x 1.5 cable gland and 1 blind plug M20 x 1.5. |
| Connection terminals: | 1.5 mm ² fine wire. 2.5 mm ² single wire. |
| Operating conditions: | Indoors and outdoors. |
| Operating position: | Bell dome to the front (tappet downwards). |
| Volume: | Approx. 105 dB(A) at 1m distance. |
| Operating mode: | Continuous. |
| Temperature range: | |
| Operation: | -20°C to +40°C. |
| Storage: | -30°C to +80°C. |
| Weight: | Approx. 5.5 kg. |



Ordering Information

| Type | Name | Voltage Ue | Oper. Volt range Ue | Current Cons | Article no. |
|----------------------|---|---------------|---------------------|--------------|----------------|
| Housing black | | | | | |
| dGW 21 | Ex-Signalling Bell | 12 VDC | +10/-15% | 0.60 A | F910 122 10* |
| dGW 21 | Ex-Signalling Bell | 24 VDC | +10/-15% | 0.35 A | F910 242 10* |
| dGW 21 | Ex-Signalling Bell | 110 VAC | +10/-15% | 0.14 A | F911 101 10* |
| dGW 21 | Ex-Signalling Bell | 110 VDC | +10/-15% | 0.13 A | F911 102 10* |
| dGW 21 | Ex-Signalling Bell | 230 VAC | +10/-15% | 0.06 A | F912 301 10* |
| dGW 21 | Ex-Signalling Bell | 240 VAC 60 Hz | +10/-15% | 0.07 A | F912 401 1060* |
| dRGW 21 | Ex-Signalling Bell with telephone relay | 230 VAC | +10/-15% | 0.06 A | F912 301 1000* |
| Housing red | | | | | |
| dGW 21 | Ex-Signalling Bell | 12 VDC | +10/-15% | 0.60 A | F910 122 1013* |
| dGW 21 | Ex-Signalling Bell | 24 VDC | +10/-15% | 0.35 A | F910 242 1013* |
| dGW 21 | Ex-Signalling Bell | 110 VAC | +10/-15% | 0.14 A | F911 101 1013* |
| dGW 21 | Ex-Signalling Bell | 110 VDC | +10/-15% | 0.13 A | F911 102 1013* |
| dGW 21 | Ex-Signalling Bell | 230 VAC | +10/-15% | 0.06 A | F912 301 1013* |

*All article-numbers are ATEX-variants