



THORNE &
DERRICK
INTERNATIONAL

Thorne & Derrick
+44 (0) 191 410 4292
www.heatingandprocess.com



Stübbe[®]
Partner for Solutions

VALVES

PUMPS | VALVES | INSTRUMENTATION



STANDARDS IN PERFECTION AND SAFETY

ASV Stübbe is an international manufacturer of pumps, valves, instrumentation and control systems made of thermoplastics.

As a system supplier, we offer a wide range of high-quality solutions for the handling of aggressive, corrosive and water polluting substances.

Our products can be found in many demanding industries

ENVIRONMENTAL TECHNOLOGIES

SURFACE TECHNOLOGY

CHEMICAL INDUSTRY

METALLURGY

With more than 50 years of experience we have the necessary expertise for the design of pumps and tubing systems with regard to chemical resistance considerations.

The benchmark for our success is customers' satisfaction. Our permanent objective is to provide our customers with the most economical solution combined with a maximum of reliability.



Quality and efficiency

- Sea water desalination
- Wastewater treatment
- Exhaust air scrubbers
- Biogas treatment
- Ultra-pure water
- Process water
- Manufacturing of bio fuels
- ...



Competence and innovation

- PCB manufacture
- Solar cell manufacturing
- Electroplating
- Glass finishing
- Coating lines
- ...



Perfection and safety

- Chemical plant manufacturing
- Acid production
- Fertilizer production
- Chlor-alkali electrolysis
- ...



Reliability and resistance

- Ore extraction
- Copper electrolysis
- Acid regeneration
- Nickel electrolysis
- Steel pickling
- ...

PRODUCT RANGE



▶

Valves
 Our wide range of valves offers solutions for almost any application. Next to our extensive standard range also customised solutions can be realised for your specific process requirements.



▶

Pumps
 ASV Stübbe produces pumps for the safe transport of aggressive and corrosive liquids of up to 400m³/h. Our range includes horizontal as well as vertical pumps from highly corrosion and wear resistant materials.



▶

Instrumentation
 Our systems for filling level, pressure and flow control are of robust design and suitable for fast end efficient systems integration. We manufacture corrosion resistant instrumentation technology for tank and plant builders.

VALVES

▼

Ball valves	6
C 100	8
C 110	9
Profi 101	10
C 10	11
C16	12
Butterfly valves	14
K 210	16
K 220	17
Diaphragm valves	18
MV 308	19
MV 310	20
Monitoring valves	22
SF 305	23
SRV 303	24
RSK 500	24
KRV 360	25
BE 891	25
Solenoid valves	26
Typ 150	26
Typ 160	27
Fittings	28
Accessories	30



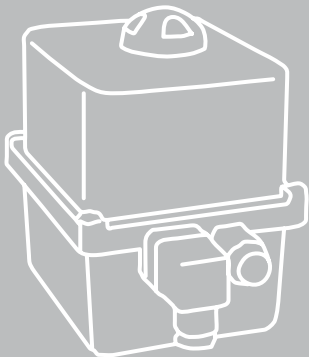
BALL VALVES

Typ	C 100	C 110	Profi 101	C 10	C 16
Size	DN 10 - DN 50	DN 65 - DN 150	DN 10 - DN 65	DN 15 - DN 50	DN 50 - DN 150
Materials	<div><div>PVC-U</div><div>PVC-C</div><div>PP</div><div>PVDF</div></div>	<div><div>PVC-U</div><div>PP</div><div>PVDF</div></div>	<div><div>PVC-U</div><div>PP</div></div>	<div><div>PVC-U</div><div>PP</div></div>	<div><div>PVC-U</div></div>
Sealing elements	EPDM, FPM	EPDM, FPM	EPDM, FPM	EPDM, FPM	FPM
Actuation	Hand lever, electrical, pneumatic	Hand lever, electrical, pneumatic	Hand lever, electrical, pneumatic	Hand lever, electrical, pneumatic	Hand lever, electrical, pneumatic
Features	Proportionon ball as option	up to DN 150	Dosing ball as option	ultra low dead volume	ultra low dead volume

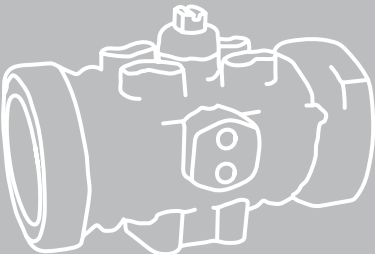
Actuators



ASV Stübbe offers a range of easy-to-assemble actuators for ball and butterfly valves. The available actuators range from simple turn-actuators to advanced solutions with ASI-Bus interfaces or for ATEX-areas.



The reliable electrical standard actuator comes with two adjustable end switches and an integrated manual override and can be upgraded with a host of additional options.



Robust pneumatic actuators are available in NC (normally closed), NO (normally open) and DA (double acting) versions.



C 100



C 110



Profi 101



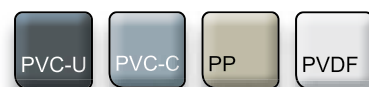
C 10



C 16

BALL VALVE C 100

Sizes DN 10 - DN 50



Ball valve C 100

The ball valve C 100 is the system ball valve for demanding chemical applications. It offers very good flow characteristics and can be upgraded up to an automatic regulation valve.



Proportional ball

By means of a proportional ball the standard ball valve can be upgraded to a regulation valve with linear flow characteristics. Due to its simple automation with electrical actuators this feature constitutes an economic alternative to diaphragm valves.



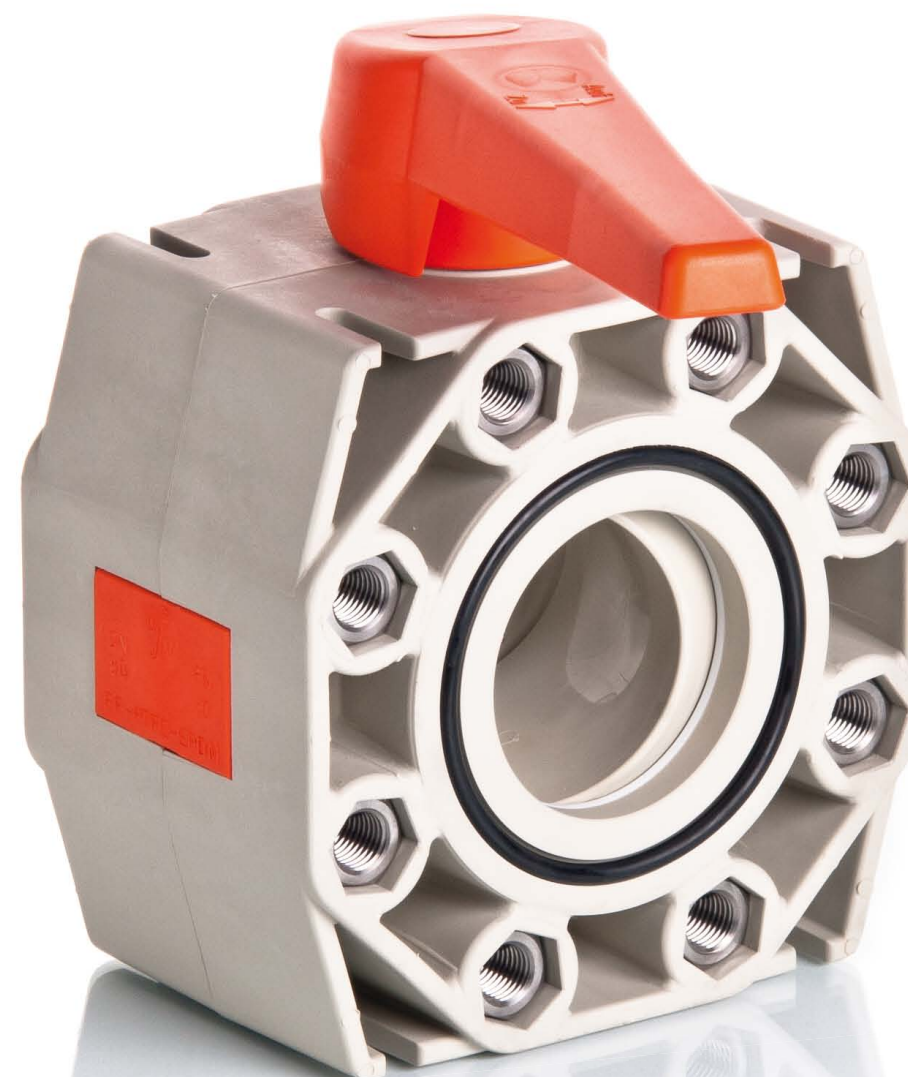
BALL VALVE C 110

Sizes DN 65 - DN 150



Ball valve C 110

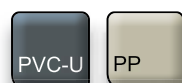
The C 110 is setting the standards for chemical ball valves in the range of up to DN 150. Whenever maximum openings and low flow resistances are required, the C110 is being used. The 2-part, screw-mounted housing guarantees high pressure resistance. A host of mounting versions allows the best possible assembly. In a wafer-type version the valve can be mounted directly between DIN flanges and allows full flow while being extremely compact in size.





BALL VALVE PROFI 101

Sizes DN 10 - DN 65



BALL VALVE PROFI 101

The Profi 101 is suitable for applications from water treatment to aggressive chemicals. The ball valve has a very compact, welded housing. Standard union nuts according to ISO 8063 ensure general compatibility and allow a simple installation into the pipeline systems.



Dosing ball

For precise dosing and regulation applications this series is available with a special dosing ball. With its 180° scale it allows reproducible setting even in manually operated process sections.



Ball valve C 10

The C 10 is a compact special ball valve, which can be found in many industrial applications. Due to its special production process the dead volume between ball and housings has been reduced to the absolute minimum. The C 10 is suitable for applications where standard ball valves are disqualified because of crystallising fluids or higher cleaning standards. The ball valve has the same installation dimensions as the Profi 101 and also comes with DIN ISO 8063 union nuts.



BALL VALVE C 10

Sizes DN 15 - DN 50



BALL VALVE C 16

Sizes DN 50 - DN 150

PVC-U



Ball valve C 16

The C16 is the tried and tested classic design of our special ball valves. It features an ultra low dead volume. The stainless steel stem allows high actuation torques.

Used in sludge presses draining in water treatment, vacuum systems for slaughterhouse waste and in the food industry the C16 combines the chemical resistance of a plastic valve with the mechanical strength of a stainless steel armature.



Special ball valve for toughest applications

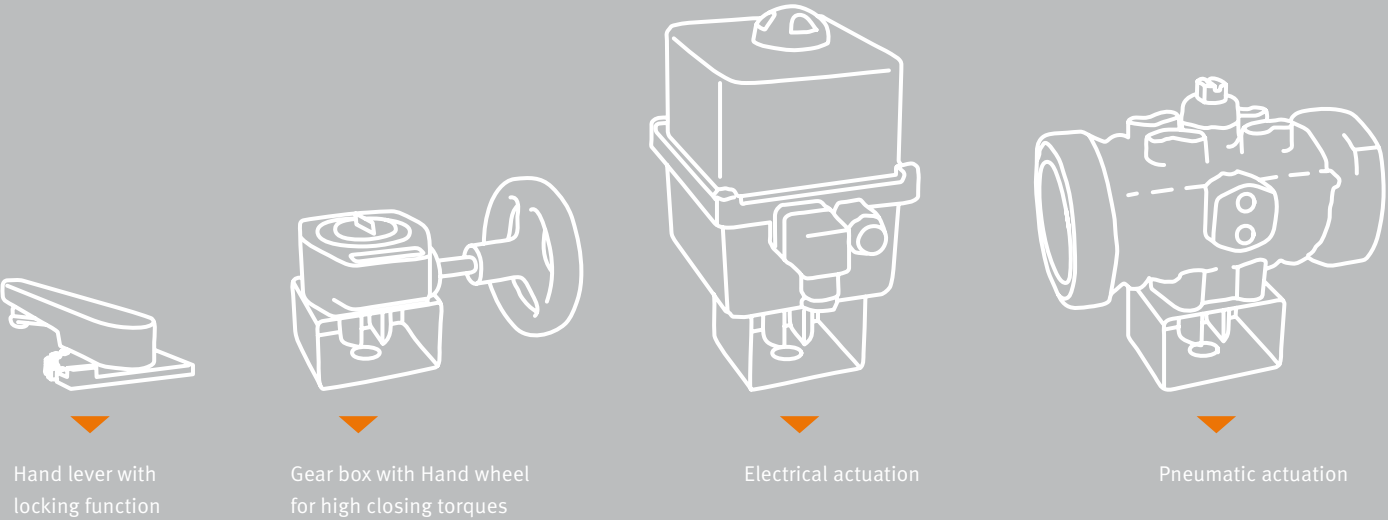
Features:

- ▶ Ultra low dead volume design with full encapsulated PE-Ball.
- ▶ Optional also available with a high-molecular PE-ball with highest mechanic resistance against wear and tear.
- ▶ Fully encapsulated stainless steel stem for highest operational torques.
- ▶ PP/steel flanges in electro-plating quality or weight reduced GFR-flanges.
- ▶ Extra-long actuation handle, optional with locking devices.

BUTTERFLY VALVES

Typ	K 210	K 220
Sizes	DN 50 - DN 200	DN 250 - DN 400
Materials	<div><div>PVC-U</div><div>PP</div><div>PVDF</div></div>	<div><div>PVC-U</div><div>PP</div><div>PVDF</div></div>
Sealing element	EPDM, FPM	EPDM, FPM
Actuation	Hand lever, Gear box, electrical, pneumatic	Gear box, electrical, pneumatic
Sealing system	stirrup seal	liner

Actuators



ASV butterfly valves are suitable for closing or flow reduction of media streams in pipe lines of up to DN 400. The narrow but robust plastic design as well as the high quality sealing systems meet the industry requirements towards che-

mical resistance and reliable mechanical parts. Because of their soft seals the butterfly valves are insensitive towards small contaminations or particles in the fluid.

Stirrup seals on the wafer of the K210 (lh) and liner seals in the housing for the K 220 (rh).



For the automation of butterfly valves higher torque actuators have to be used compared to ball valve.

BUTTERFLY VALVE K 210

Sizes DN 50 - DN 200



Butterfly valve K 210

The chemical industry standard K210 is fitted with a stirrup seal around the valve plate. The stem is made of high grade stainless steel and protected by a double O-Ring seal against contact to the aggressive fluids. Additional PVDF-sleeves reduce the actuation torque of the centric valve to a minimum.



BUTTERFLY VALVE K 220

Sizes DN 250 - DN 400



Butterfly valve K 220

This massive chemical industry standard K220 is being used for shutting or throttling purposes in bigger tube diameters. The internal liner acts also as flange seal. All manual valves are supplied with an adjustable hand wheel gear box.



DIAPHRAGM VALVE

Typ	MV 308	MV 310
Sizes	DN 12 - DN 15	DN 15 - DN 100
Materials	<div> <div>PVC-U</div> <div>PP</div> <div>PVDF</div> </div>	<div> <div>PVC-U</div> <div>PP</div> <div>PVDF</div> </div>
Sealing elements	EPDM, FPM	EPDM, FPM
Actuation	pneumatic	Hand wheel, pneumatic
Options	-	Stroke limite

Quick shut-off installations, simple regulation applications or fluids with particles often require the use of diaphragm valves. ASV Stübbe offers a tried and tested range of such products. The MV 310 is the most common all-purpose valve with many high-performance variations up to DN 100.

The MV 308 is the pneumatically actuated smaller option for applications where space is the major issue. Both series are available with EPDM, PTFE-lined or FDM diaphragms.



DIAPHRAGM VALVE
MV 308

Sizes DN 12 - DN 15



Diaphragm valve MV 308

The MV 308 is a very compact design and therefore best suitable for distribution modules or for realising switching functions in limited installation environments. The valve contains a stroke limiter and an optical position indicator as standard. It is designed for operation pressures of up to 6 bar.

DIAPHRAGM VALVE MV 310

Sizes DN 15 - DN 100



Diaphragm valve MV 310

In combination with the pneumatic actuators the MV 310 is a reliable and economic valve with many options. By means of powerful pneumatic actuators pressures of up to 10 bar can be reliably shut off even in bi-directional flow situations.



MONITORING VALVES

Typ	SF 305	SRV 303	RSK 500	KRV 360	BE 891
Sizes	DN 15 - DN 100	DN 15 - DN 100	DN 40 - DN 200	DN 10 - DN 80	DN 10 - DN 80
Materials	<div><div>PVC-U</div><div>PP</div><div>PVDF</div></div>	<div><div>PVC-U</div><div>PP</div><div>PVDF</div></div>	<div><div>PVC-U</div><div>PP</div><div>PVDF</div></div>	<div><div>PVC-U</div><div>PP</div><div>PVDF</div></div>	<div><div>PVC-U</div><div>PP</div><div>PVDF</div></div>
Sealing elements	EPDM, FPM	EPDM, FPM	EPDM, FPM	EPDM, FPM	FPM
Function	Strainer	Angel seat check valve	Wafer check valve	Ball check valve	Aeration valves
Options	-	-	Spring	-	Spring

STRAINER
SF 305

Sizes DN 15 - DN 100



Strainer SF 305

Strainers protect sensitive components in the pipelines, e.g. pressure control valves or pumps from the risk of particle contamination. They are available with various mesh sizes and protect the installation from damage and down time.



Strainer
SF 305



Angel seat check valve
SRV 303



Wafer check valve
RSK 500



Ball check valve
KRV 360



Aeration and ventilation
valves BE 891

MONITORING VALVES



Angel seat check valve SRV 303

The angel seat check valve SRV 303 in PVC is due to its special design without spring suitable for horizontal or vertical installation (always with piston upright). The PP and PVDF versions are equipped with a specially coated spring.

Sizes DN 15 - DN 100

Ball check valve KRV 360

The ball check valve KRV 360 is a gravitation actuated valve for a designated flow direction. It reliably avoids back pressure even at lowest differential pressure.

Sizes DN 10 - DN 80



Wafer check valve RSK 500

The wafer check valve RSK is a robust, industry type design. The installation adaptors, needed of the mounting of the RSK in the pipeline, replaces the flange adaptors or stub flanges and allows a maximum opening angle of the wafer. The strong hinge design sets the industrial standard. The valve can be installed in horizontal lines, and is with an optional integrated spring also suitable for use in vertical lines.

Sizes DN 40 - DN 200



Aeration and ventilation valve BE 891

The aeration/ventilation valve supports the filling and emptying of containers and tanks. In the version B895 with coated spring the valves act as a ventilation device for tubes and container only. When the pressure inside the system drops, air can enter via the valves against the spring force into the otherwise hermetically sealed system.

Sizes DN 10 - DN 80

SOLENOID VALVE TYP 150

Sizes DN 10 - DN 20



Solenoid valve Typ 150

Whenever fast and frequent switching is required solenoid valves are being used. Type 150 is a direct acting valve with a full plastic body up to DN 20. The sealing of the pilot unit happens by means of a PTFE bellow seal.

SOLENOID VALVE TYP 160

Sizes DN 15 - DN 50



Solenoid valve Typ 160

Type 160 is a pilot operated full plastic body valves which can ready short switching times in systems where no compressed air is available. The pilot unit of the valve is media isolated by means of a separating diaphragm. Because of its design the valve requires a minimum differential pressure of 0.3 bar for reliable operation.

TUBES AND FITTINGS

Sizes d 16 - d 225



Tubes and fittings

Only the perfect combination of all components guaranties the best overall performance of a system. ASV therefore offers tubes and fittings made by leading manufacturers as part of its scope of supply.

PVC-U	d16 - d225
PVC-C	d16 - d110
PP	d20 - d225
PVDF	d20 - d110



CONNECTING PARTS AND ACCESSORIES

Sizes d 16 - d 400



Flanges

Sizes d 16 - d 400

The PP/steel flanges are being tested at 30.000 volt acc. to electro-plating standards to guarantee the hermetic tightness of the PP coating and the highest chemical resistance.



Pipe clips

Sizes d 16 - d 32

Pipe clip banks

Sizes d 6 - d 28

Pipe clamps





Sizes d 40 - d 160

Clips and clamps made from PE and PP material up to d 160 allow a fast and easy installation of tubing systems and pipeline components.



SUBSIDIARIES AND PARTNERS

EUROPE:

- 
Headquarter:
ASV Stübbe GmbH & Co. KG
 Hollwieser Str. 5
 D-32602 Vlotho, Germany
 Tel. +49(0)5733 799-0
 Fax +49(0)5733 799-5000
 contact@asv-stuebbe.de
 www.asv-stuebbe.de
- 
ASV Stübbe España S.L.
 Rambla Josep Mª Jujol
 33-35 locales E1-F1
 E-08970 Sant Joan Despí
 Barcelona
 Tel: +34 (0) 93 477 46 10
 Fax: +34 (0) 93 477 46 11
 yserrano@asv-stuebbe-spain.com
- 
ASV Stübbe France SARL
 Immeuble « Le Cérès »
 21-23 rue du Petit Albi
 BP 48453
 95807 Cergy Pontoise Cedex
 Tel: +33 (0) 1 30 75 10 45
 Fax: +33 (0) 1 30 75 10 46
 michel.janas@asv-stubbe.fr
- 
ASV Stuebbe Ukraine TOV
 Baseina Str., 5b, of. 30
 01001 Kyiv
 Tel: +38 044 303 93 64
 Fax: +38 044 234 38 00
 asv_ukraine@ukr.net

CHINA:

- 
Beijing Branch
 Avic Building, No.10B, Central Road, East 3rd
 Ring Road, ChaoYang District, Beijing China
 100022, 2405A
 Tel: +86 (10) 65673748
 Fax: +86 (10) 65673780
 asv-stuebbe@asv-stuebbe.cn
- 
**ASV Stuebbe Pumps & Valves
(ShenZhen) Co., LTD**
 Building H Dakenglong Industrial Park,
 No. 222 Buxin Road, Guanlan subdistrict,
 Bao'an District, ShenZhen 518110
 Tel: +86 (0) 755-88 83 19 87
 Fax: +86 (0) 755-29 83 20 80
 asv-stuebbe@asv-stuebbe.cn
- 
Shanghai Branch
 Unit 1, No.1078 Huajiang Road, Jiangding
 District,
 Shanghai China 201804,
 Tel: +86 (0)21-63261281
 Fax: +86 (0)21-63261282
 asv-stuebbe@asv-stuebbe.cn
- 
**ASV Stuebbe Pumps & Valves
(Suzhou) Co., LTD**
 No. 16 Nanguanduo Road, Yuexi, Wuzhong
 District, Suzhou, Jiangsu China 215104
 Tel: +86 (0)512-66566846
 Fax: +86 (0)512-66566932
 contact@asv-suzhou.com
- 
Chengdu Branch
 Rm. 2408, Building A, Government Plaza
 No. 216, Lower Dongdajie Street
 Chengdu, Sichuan province, China 610015
 Tel: +86 (0)28-86672976/ 86653723
 Fax: +86 (0)28-86672387
 asv-stuebbe@asv-stuebbe.cn

DISTRIBUTION PARTNERS:

Czech Republic
Denmark
Finland
Great Britain
Italy
Netherlands
Norway
Poland
Russia
Sweden
Australia
Canada
Chile
South Africa
Uzbekistan

QUALITY MANAGEMENT AND SERVICE

Reliability and chemical resistance



Service to us means 360° support for our customers. From the selection of the proper materials through to after sales service - use our expertise and experience to minimise your cost and effort and maximise your market impact.

In-process inspections and quality control of components guarantee high quality final products.

Quality, perfection and reliability are the guiding principles of our company. After all, our products are used for the safe handling of water polluting and hazardous substances and have to reliably resist the most aggressive media.

Materials and products are permanently inspected in demanding quality tests in our own company laboratory.



Quality management system certified according to DIN EN ISO 9001:2008





THORNE &
DERRICK
INTERNATIONAL

Thorne & Derrick
+44 (0) 191 410 4292
www.heatingandprocess.com



Stübbe[®]
Partner for Solutions

ASV Stübbe GmbH & Co. KG
Hollwieser Str. 5
D-32602 Vlotho, Germany
Tel. +49(0)5733 799-0
Fax +49(0)5733 799-5000
contact@asv-stuebbe.de
www.asv-stuebbe.de