

### FEATURES

- Explosionproof operator for use in potentially explosive atmospheres according to ATEX-Directive 2014/34/EU  
EC type examination certificate no.: **LCIE 10 ATEX 3043X**  
IECEx Certificate of Conformity no.: **IECEx LCI 10.0010X**
- Compliance with the Essential Health and Safety Requirements has been assured by compliance with the International and European Standards IEC and EN: 60079-0, 60079-1 and 60079-31
- Easy electrical installation by means of a screw terminal coil
- Enclosure provided with a 1/2 NPT threaded entry hole for a broad range of cable entries
- Ingress protection degree IP67 - NEMA 4/4X
- A wide range of valves can be supplied with the operator

### CONSTRUCTION

#### Solenoid enclosure

LPKF  
WSLPKF  
LPKF  
WSLPKF

Aluminium, cataphoresis black painting

Stainless steel (AISI 316L)

#### Bonnet

Stainless steel

Stainless steel (AISI 316L)

#### Cover screws

Stainless steel

#### Core, core tube and plugnut

Stainless steel

#### Seals

VMQ

#### Upper disc

FPM

#### Lower disc

NBR

#### Nameplate

Stainless steel

#### Coil connection

Embedded screw terminals

#### Safety code

II2G Ex d IIB+H2 Gb T6...T4

II2D Ex tb IIIC Db T85°C...T135°C IP66/IP67

### ELECTRICAL CHARACTERISTICS

#### Standard voltages

DC (=) : 24V - 48V

AC (~) : 24V - 48V - 115V - 230V / 50 Hz

### TEMPERATURE CLASSIFICATION TABLES

#### AC solenoids (-)

Pn (watt)	solenoid size			maximum ambient °C (1) (5)			
				surface temperature			
		M6		T6 85°C	T5 100°C	T4 135°C	
insulation class F (155°C) 100% E.D.							
-		-	-	-	-	-	-
2,4 (2) (4)		●		40	65	80	-

#### DC solenoids (=)

Pn (watt)	solenoid size			maximum ambient °C (1) (5)			
				surface temperature			
		M6		T6 85°C	T5 100°C	T4 135°C	
insulation class F (155°C) 100% E.D.							
0,5 (3)		●		60	-	-	-
2,1 (4)		●		40	-	80	-

Check the wattage compatibility with the product selected.

(1) **The minimum allowable ambient temperature is -40°C for the operator.** Actual temperature range can be limited depending on valve operation limits.

(2) AC (-): rectified coil construction.

(3) 24 V DC value.

(4) Maximum cold wattage.

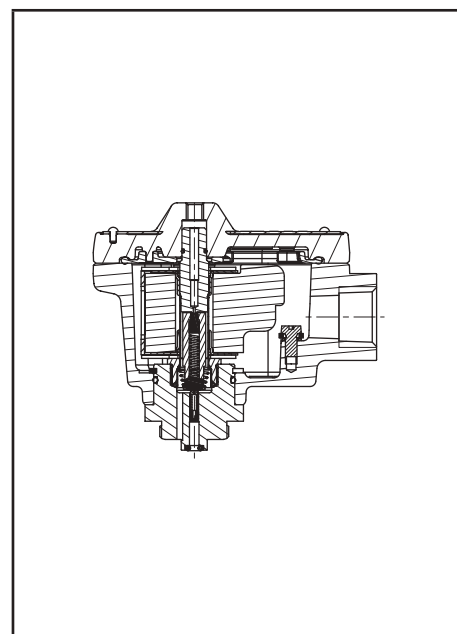
(5) For the layout of the control circuit, see the installation and maintenance instructions at: [www.asco.com](http://www.asco.com)

### CONNECTIONS

- Any IECEx-ATEX approved cable entry device can be fitted in the 1/2" NPT threaded entry hole
- Internal and external earthing connection
- The operator can be rotated through 360° to select the most favourable position for cable entry

### OPTIONS

- Brass nickel plated cable gland



### ORDERING INFORMATION

A valve supplied with the explosionproof operator will be identified with prefix LPKF or WSLPKF before the catalogue number.

Example: **LPKF** G 551B305 24V/DC

**LPKF** G 552A301 230V/AC

**WSLPKF** G 553A318 230V/AC

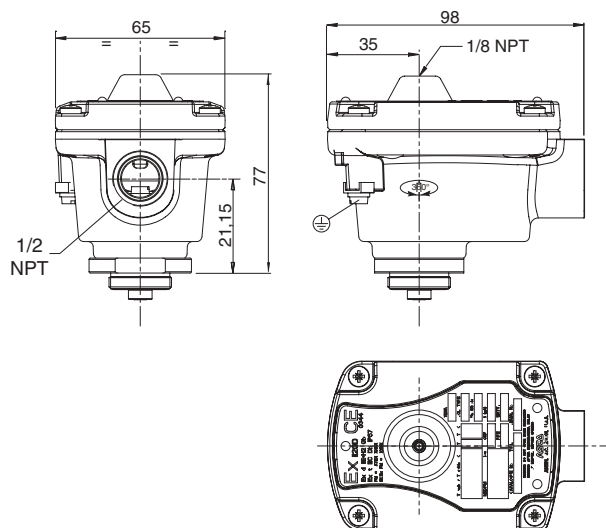
operator — voltage  
pipe thread — basic number

### DIMENSIONS (mm), WEIGHT (kg)



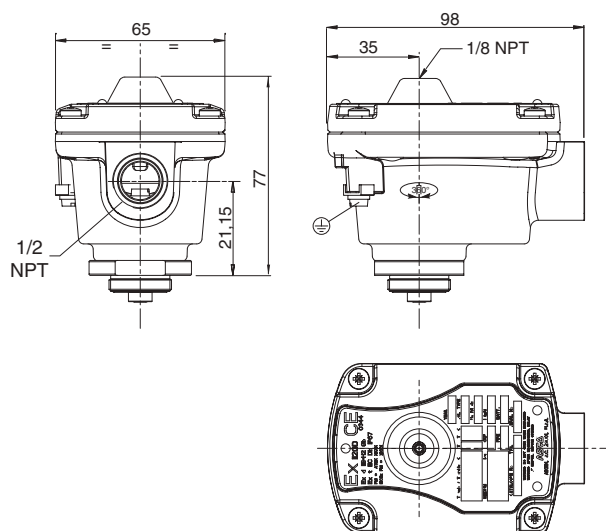
#### TYPE LPKF

Prefix "LPKF" Solenoid  
Aluminium, epoxy coated  
IEC, EN: 60079-1, 60079-31  
II2G Ex d IIB+H2 Gb T6...T4 - II2D Ex tb IIIC Db IP66/IP67



#### TYPE WSLPKF

Prefix "WSLPKF" Solenoid  
Stainless steel, epoxy coated  
IEC, EN: 60079-1, 60079-31  
II2G Ex d IIB+H2 Gb T6...T4 - II2D Ex tb IIIC Db IP66/IP67



prefix	weight
LPKF	0,55
WSLPKF	1,16



**THORNE & DERRICK**  
INTERNATIONAL  
Thorne & Derrick  
+44 (0) 191 410 4292  
www.heatingandprocess.com