

SX ABRYLL

HIGH SECURITY LOCK

PRODUCT OVERVIEW:

The SX ABRYLL HIGH LOCK is a member of our unique SX product family, which has been specifically designed for use in hazardous (Ex) environments.

Extremely robust and highly reliable, the lock works with both our door controller and access reader systems or with third party ACU systems to provide a highly effective solution for access control in Ex classified hazardous areas.

Features:

The SX ABRYLL HIGH SECURITY LOCK is a High Security Single Point Locking System that offers a multitude of functions including Panic and Emergency Escape, Mechanical and Electro-Mechanical Deadlocking.

The SX ABRYLL has been developed by SecurEx Technology & MICO Tindall Engineering working in close partnership and thereby bringing together an unrivalled combination of security and hazardous area expertise to create a truly unique and innovative product.

The standard MICO Abryll Range has already established itself as the most approved



Single Point Locking Range for high security applications, and now this superior locking technology is available in a specially re-designed and certified form for use in Ex Zones 1, 2, 21 & 22 Hazardous areas.

Manufactured from 316L stainless steel as standard the SX ABRYLL offers a robust, high security solution for the harshest of environments. Designed with versions for left or right handed, inward or outward opening doors, fail safe or fail secured applications, with or without emergency escape facility, the SX ABRYLL is suitable for virtually all applications to be found in hazardous environments.



THORNE &
DERRICK
INTERNATIONAL

Thorne & Derrick
+44 (0) 191 410 4292
www.heatingandprocess.com

Tried & Tested Security

Tested and approved on selected single and double door sets to LPCB SR 2,3,4,5 & 6 and with additional HM Government approvals the new SX ABRYLL is the ideal choice for security in hazardous areas where security is paramount.

In common with the standard MICO Abryll, the SX ABRYLL Range also boasts Panic and Emergency Escape functions, which carry the latest BS EN 179 and BS EN 1125 accreditations for your added peace of mind.

Security:

The Loss Prevention Certification Board LPS1175 SR1, SR2, SR3, SR4, SR5 and SR6

Escape:

BS EN 1125:2008 & BS EN 179:2008

Integrated Certified Electronics

The lock incorporates a specially designed CERTIFIED modular electronic control and monitoring package, which can be further upgraded both by adding additional functionality and/or the unique option of SX electro-kinetic wireless monitoring technology.

The standard certified control package includes for electro-mechanical lock actuation bolt position and door closed detection (using a special contact limit switch that detects the presence of the locking plate), which means you always know for sure when the door is closed and the bolt securely engaged.

Deadlocking and thumbwheel actuation monitoring can also be added as an upgrade to the standard internal electronics package.

For ease of site installation the entire modular electronics package is connected via a single 4-metre factory wired multi-core cable

SecurEx Electro-kinetic wireless monitoring technology can also be added as a further security upgrade. This unique technology enables both the lock and door status to be monitored without batteries, power or cables connected.

Documentation:

The lock is provided with a standard full documentation pack including Operation, Installation & Maintenance Guide (OIMG) including mounting templates & copies of all appropriate certifications.



THORNE &
DERRICK
INTERNATIONAL

Thorne & Derrick
+44 (0) 191 410 4292
www.heatingandprocess.com

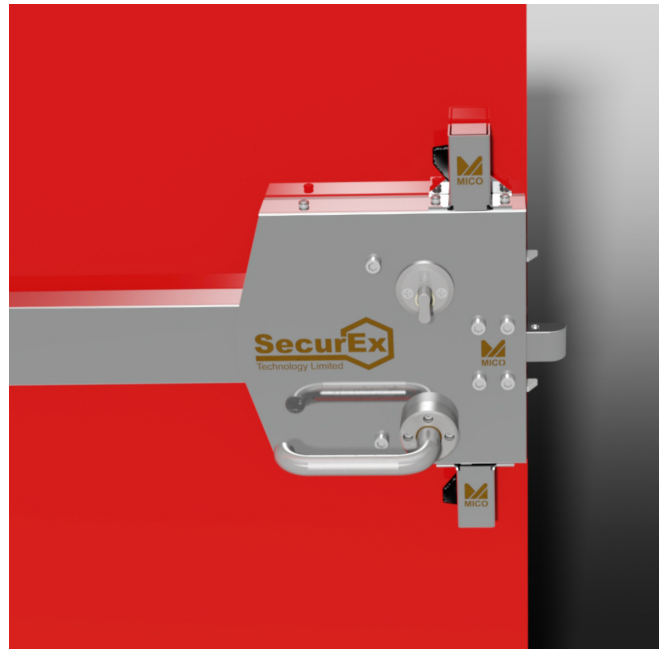
Options:

The SX ABRYLL supports ALL the mechanical options and configurations that are provided by the standard MICO Abryll product range, (see the MICO Abryll datasheet) including:

- Fail OPEN and Fail CLOSED Locking Configurations available. (No cost Option - Specify at time of order)
- Version with Emergency Release Facility Blanked off (No cost Option - Specify at time of order)
- Internal Break Dome Emergency Release Cover available at extra cost
- External Cylinder Mechanism with cylinder guard. (SR2, 3, 4, 5 & 6) available at extra cost on selected door sets

Additionally, we can provide the following Ex certified options:

- Extended temperature range (high ambient 50 °C version) is optionally available at extra cost
- Deadlock & Thumbwheel Monitoring
- Electro Kinetic Wireless monitoring
- Door fitting accessories kit including bespoke matching protective cable conduit solution



THORNE &
DERRICK
INTERNATIONAL

Thorne & Derrick
+44 (0) 191 410 4292
www.heatingandprocess.com

Specifications:

Security Rating

- Designed & tested to meet class LPCB SR 2, 3, 4, 5 and 6 on selected single and double door sets

Size & Weight

- Lock 250 x 255 x 40 HWD (excluding Handle & Thumbwheel where fitted)
Approx. 8.0 to 11.0 Kg depending on configuration
- Plate 150 x 175 x 45 HWD Approx. 1.0 Kg

Enclosure Style

- 316L Stainless Steel Clamshell Body & Stainless Steel Locking Plate

Mounting Options

- Surface / 6 x M8 bolts

Ambient Temp Range

- - 30 °C to + 40 °C
- (+50 °C High Temp Version available at extra cost)

IP Protection (minimum)

- IP54 (Case / mechanism)
- IP65 (Electronics)

Certification (ATEX / IECEx)

- Ex II 2G T4 Gb
- Ex II 2D T135 Db

Power Requirements

- 24VDC 14 Watts (active)



USER Connection

- Via single 4-meter multi-core cable exiting via strain relief bushing at center line of lock body
- Separate Earth bonding point provisioned on case

