

Amphenol®



Amphe-SP3 Single Pole Plastic Power Connectors

Amphe-SP3 are Single Pole Plastic Connectors with RADSOK® Contacts, Amphenol's high current contact technology. The connectors are colored in gray and black and differentiated in two keyway rotations to indicate polarity and prevent potential mating mistakes. Offered with a standard cable gland style receptacle or busbar termination. These connectors are designed for environmental high power applications and have been successfully applied to Outdoor Power Supply, Control Systems, Communications in various industrial markets like Hybrid and Electric Vehicle, Heavy Equipment, Outer Door LED, Factory Automation, etc.

Features:

- High-Current up to 120 amps with low mating force
- Color and Keyway positions of different Polarity to ensure safety while in operation.
- Finger-Proof in unmated situation
- IP67 in mated situation
- Light-Weight
- Cost-Effective
- ROHS compliant



**THORNE &
DERRICK**
INTERNATIONAL

Thorne & Derrick
+44 (0) 191 410 4292
www.heatingandprocess.com

MATERIAL DATA

- Shell and Insert: Thermo Plastic
- Coupling Nut: Thermo Plastic
- Contacts: Copper alloy, 5.7mm RADSOK® (plug side only), Silver Plated (gold plated available per request)
- Cable Gland: Thermo Plastic



Receptacle with Busbar Termination and Pin Contact

Part Number	Key Way Position	Operating Current	Description
C10-679103-001	120	120A	Plug with Socket Contact
C10-679104-001	120	120A	Wall Mount Receptacle with Pin Contact
C10-670306-001	90	120A	Receptacle with Busbar Termination and Pin Contact
C10-679103-002	90	120A	Plug with Socket Contact
C10-679104-002	90	120A	Wall Mount Receptacle with Pin Contact
C10-670306-002	120	120A	Receptacle with Busbar Termination and Pin Contact

ELECTRICAL DATA

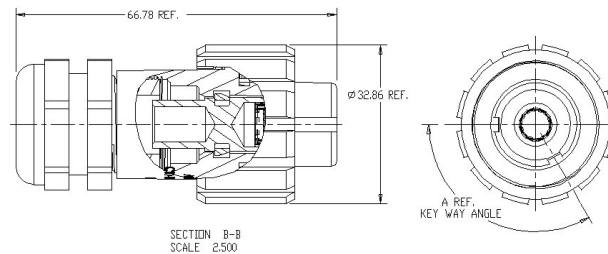
- Operating Voltage: 600V AC Max
- Dielectric withstanding voltage: 3000 VA Min.
- Current Rating: 120A Max
- Insulation Resistance: 5000 Megohms Min at 25C
- Contact Resistance: 5 millionhms Max
- Vibration shock: 980 m/s²

MECHANICAL DATA

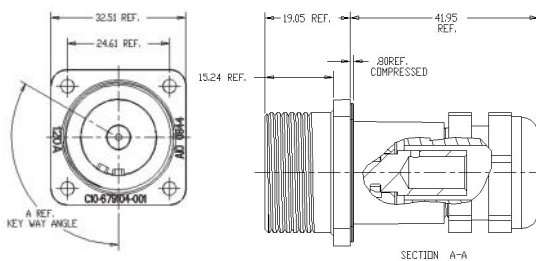
- Operating Temperature: -40C to +125C
- Mating Cycles: 500 times Min
- Salt Fog Spray: NACI 5%, 1000H
- Contact Termination: Crimp
- Contact Size: 4 AWG

PART NUMBERS AND DIMENSIONS

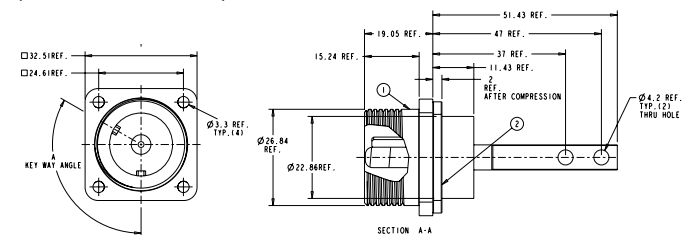
C10-679103
Plug with Socket Contact
(Dimensions in mm)



C10-679104
Wall Mount Receptacle with Pin Contact
(Dimensions in mm)



C10-679306
Receptacle with Busbar Termination and Pin Contact
(Dimensions in mm)



The information contained in this data sheet is for reference only.

Notice: Specifications are subject to change without notice. Contact your nearest Amphenol Corporation Sales Office for the latest specifications. All statements, information and data given herein are believed to be accurate and reliable but are presented without guarantee, warranty, or responsibility of any kind, expressed or implied. Statements of suggestions concerning possible use of our products are made without representation or warranty that any such use is free of patent infringement and are not recommendations to infringe any patent. The user should assume that all safety measures are indicated or that other measures may not be required. Specifications are typical and may not apply to all connectors. AMPHENOL is a registered trademark of Amphenol Corporation.



**THORNE &
DERRICK**
INTERNATIONAL

Thorne & Derrick
+44 (0) 191 410 4292
www.heatingandprocess.com