

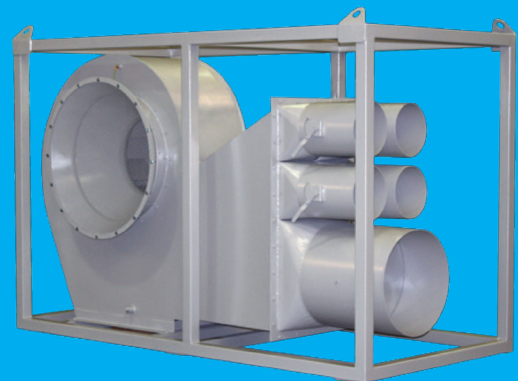
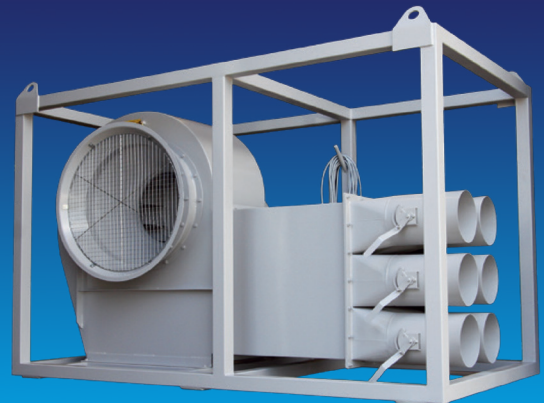
# INDUSTRIAL TANK VENT FAN RANGE

Thorne & Derrick supply cost effective, fixed or portable centrifugal tank ventilation fans with high performance. Ideal for the introduction of fresh air to confined spaces to provide a safe working environment and for gas freeing of oil and chemical tanks. Fans can be fully portable so can be used on many vessels.

Whilst in today's safety conscious work place, the preferred option is of no-man entry into a confined space. In the necessary event of man-entry for tank cleaning, the requirement is for an extensive range of breathing apparatus, gas monitoring equipment and supply of fresh air.

The provision for the introduction of fresh air provides a safe working environment and gas freeing of tanks and therefore becomes paramount for the safe working environment for those involved in tank cleaning.

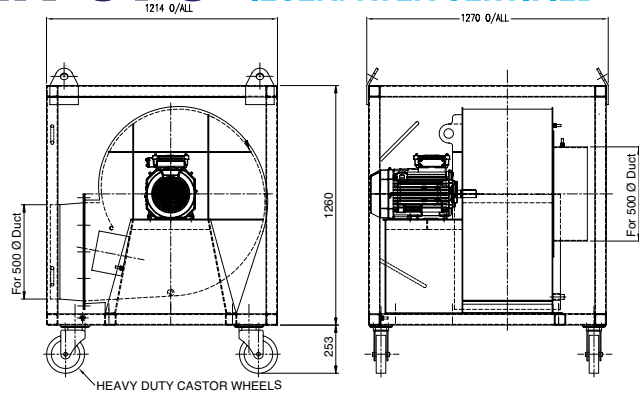
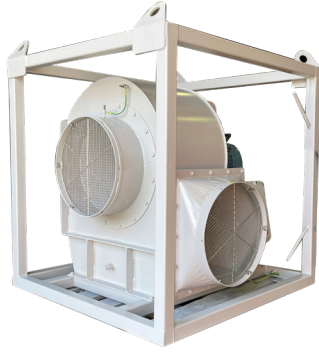
Thorne & Derrick can provide a portable, electrically driven unit to provide fresh air for the safety of workers and of the vessels while cleaning of storage holds and tanks takes place. These units can be independently ATEX and/or IECEx Certified.



Industrial Fan Specialists

# TANK VENT FAN 575

INDUSTRIAL TANK VENTILATION FAN  
IECEX/ATEX CERTIFIED



#### CERTIFICATION: ELECTRICAL

#### MOTOR

Zone 1, Ex de IIB T4 Gb, IP56  
Certified to ATEX/IECEX

#### STARTER

Zone 1, II 2 GD Ex d IIB T4, IP66  
Certified to ATEX/IECEX

#### CERTIFICATION: NON-ELECTRICAL

ATEX Zone 1 Category 2G IIB T4  
Certificate Number Sira 09ATEX 6230X  
IECEX Ex h Gb IIB T4  
Certificate Number IECEX SIR17.0076X

#### STANDARDS:

ISO 80079-36:2016 Non-electrical  
equipment for explosive atmospheres  
ISO 80079-37:2016 Non-electrical type of  
protection constructional safety  
BS EN 14986: 2017

#### KEY FEATURES:

- Independently dual certified to ATEX & IECEX
- Independently dual certified to ATEX & IECEX
- Integrated ATEX/IECEX starter
- Mobility frame with castor wheels and lifting lugs
- outlet arrangements:
- 500mm spigoted outlet

#### TECHNICAL SPECIFICATION:

- Power supply 400V 50Hz, 440V 60Hz or 690V 60Hz
- Rated current/Starting Current;
  - 400V 50Hz: 14.3A/120A
  - 440V 60Hz: 12.9A/122A
  - 690V 60Hz: 8.1A/66.4A
- Painted C5 Offshore Standard or hard wearing epoxy
- Weight: 600kg

#### PERFORMANCE:

- Maximum airflow 14,500m<sup>3</sup>/hr

#### ANCILLARY ITEMS:

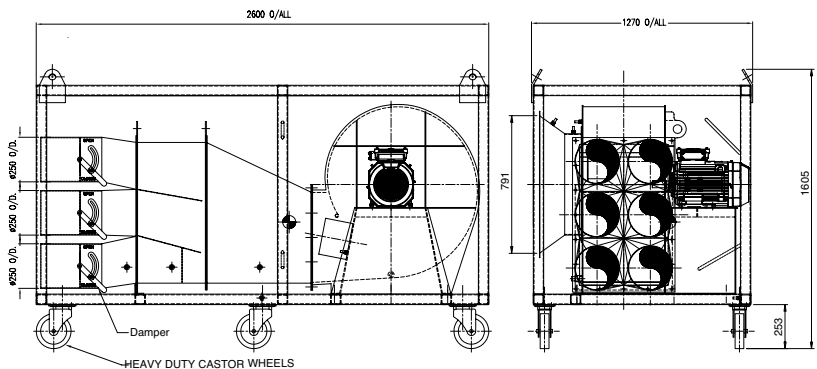
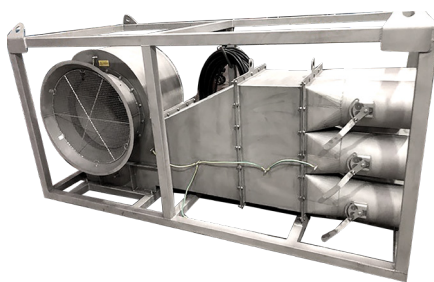
- Heavy duty lay-flat tube ducting
- Spare castor wheels

IIC Option available.

# TANK VENT FAN 575

INDUSTRIAL TANK VENTILATION FAN  
IECEX/ATEX CERTIFIED

## WITH 6 OUTLETS



#### CERTIFICATION: ELECTRICAL

#### MOTOR

Zone 1, Ex de IIB T4 Gb, IP56  
Certified to ATEX/IECEX

#### STARTER

Zone 1, II 2 GD Ex d IIB T4, IP66  
Certified to ATEX/IECEX

#### CERTIFICATION: NON-ELECTRICAL

ATEX Zone 1 Category 2G IIB T4  
Certificate Number Sira 09ATEX 6230X  
IECEX Ex h Gb IIB T4  
Certificate Number IECEX SIR17.0076X

#### STANDARDS:

ISO 80079-36:2016 Non-electrical  
equipment for explosive atmospheres  
ISO 80079-37:2016 Non-electrical type of  
protection constructional safety  
BS EN 14986: 2017

#### KEY FEATURES:

- Independently dual certified to ATEX & IECEX
- Integrated ATEX/IECEX starter
- Mobility frame with castor wheels and lifting lugs
- outlet arrangements:
- 6 x 250mm diameter outlets with individual stainless steel dampers

#### TECHNICAL SPECIFICATION:

- Power supply 400V 50Hz, 440V 60Hz or 690V 60Hz
- Rated current/Starting Current;
  - 400V 50Hz: 14.3A/120A
  - 440V 60Hz: 12.9A/122A
  - 690V 60Hz: 8.1A/66.4A
- Painted C5 Offshore Standard or hard wearing epoxy
- Weight: 850kg

#### PERFORMANCE:

- Maximum airflow 14,500m<sup>3</sup>/hr

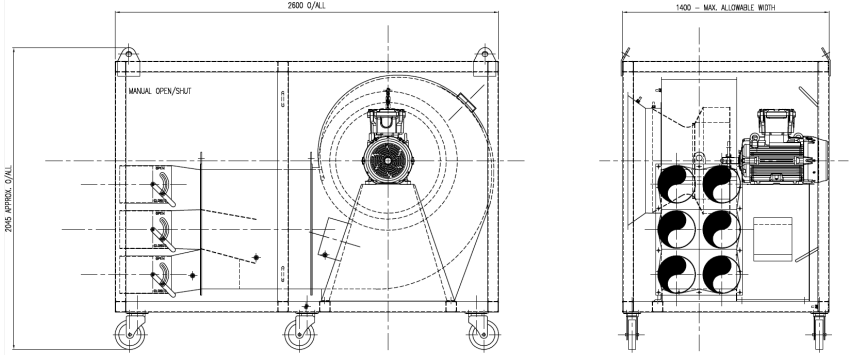
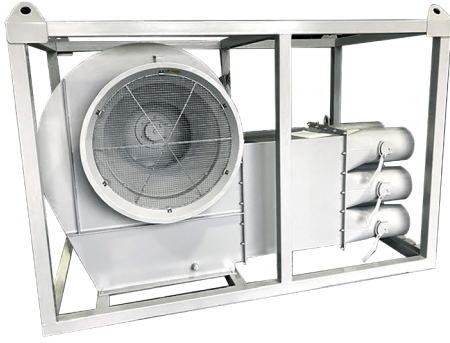
#### ANCILLARY ITEMS:

- Heavy duty lay-flat tube ducting
- Spare castor wheels

IIC Option available.

# TANK VENT FAN 710

INDUSTRIAL TANK VENTILATION FAN  
IECEX/ATEX CERTIFIED



**CERTIFICATION: ELECTRICAL**

**MOTOR**

Zone 1, Ex de IIB T4 Gb, IP56  
Certified to ATEX/IECEX

**STARTER**

Zone 1, II 2 GD Ex d IIB T4, IP66  
Certified to ATEX/IECEX

**CERTIFICATION: NON-ELECTRICAL**

ATEX Zone 1 Category 2G IIB T4  
Certificate Number Sira 09ATEX 6230X  
IECEX Ex h Gb IIB T4  
Certificate Number IECEX SIR17.0076X

**STANDARDS:**

ISO 80079-36:2016 Non-electrical equipment for explosive atmospheres  
ISO 80079-37:2016 Non-electrical type of protection constructional safety  
BS EN 14986: 2017

**KEY FEATURES:**

- Independently dual certified to ATEX & IECEX
- Integrated ATEX/IECEX starter
- Mobility frame with castor wheels and lifting lugs
- outlet arrangements:
- 6 x 256mm diameter outlets with individual stainless steel dampers

**TECHNICAL SPECIFICATION:**

- Power supply 400V 50Hz, 440V 60Hz or 690V 60Hz
- Rated current/Starting Current;
- 400V 50Hz: 27.9A/212A
- 440V 60Hz: 25.8A/222A
- 690V 60Hz: 20.3A/163A
- Painted C5 Offshore Standard or hard wearing epoxy
- Weight: 1100kg

**PERFORMANCE:**

- Maximum airflow 29,000m<sup>3</sup>/hr

**ANCILLARY ITEMS:**

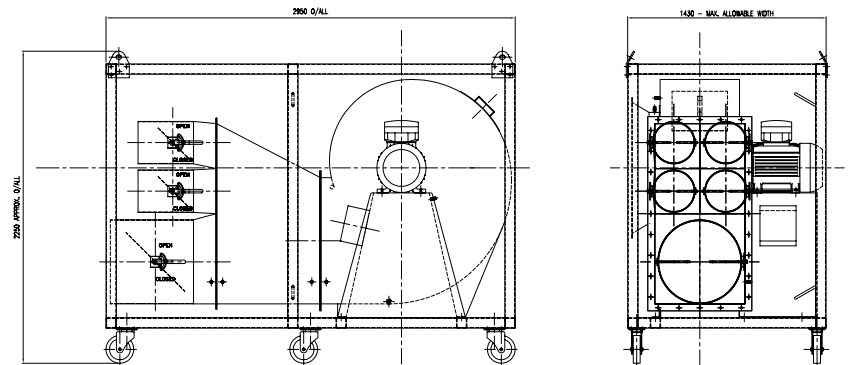
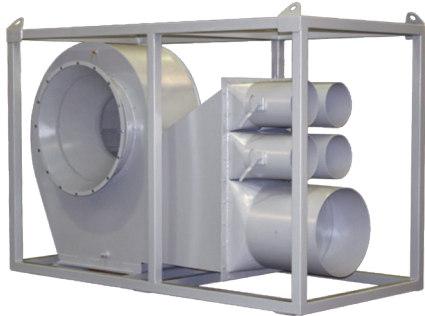
- Heavy duty lay-flat tube ducting
- Spare castor wheels

IIC Option available.

# TANK VENT FAN 800

INDUSTRIAL TANK VENTILATION FAN  
IECEX/ATEX CERTIFIED

WITH 6 OUTLETS



**CERTIFICATION: ELECTRICAL**

**MOTOR**

Zone 1, Ex de IIB T4 Gb, IP56  
Certified to ATEX/IECEX

**STARTER**

Zone 1, II 2 GD Ex d IIB T4, IP66  
Certified to ATEX/IECEX

**CERTIFICATION: NON-ELECTRICAL**

ATEX Zone 1 Category 2G IIB T4  
Certificate Number Sira 09ATEX 6230X  
IECEX Ex h Gb IIB T4  
Certificate Number IECEX SIR17.0076X

**STANDARDS:**

ISO 80079-36:2016 Non-electrical equipment for explosive atmospheres  
ISO 80079-37:2016 Non-electrical type of protection constructional safety  
BS EN 14986: 2017

**KEY FEATURES:**

- Independently dual certified to ATEX & IECEX
- Integrated ATEX/IECEX starter
- Mobility frame with castor wheels and lifting lugs
- outlet arrangements:
- 1 x 600mm and 4 x 300mm outlets with individual stainless steel dampers

**TECHNICAL SPECIFICATION:**

- Power supply 400V 50Hz, 440V 60Hz or 690V 60Hz
- Rated current/Starting Current;
- 400V 50Hz: 41.0A/299A
- 440V 60Hz: 37.3A/272A
- 690V 60Hz: 31.6A/218A
- Painted C5 Offshore Standard or hard wearing epoxy
- Weight: 1300kg

**PERFORMANCE:**

- Maximum airflow 40,000m<sup>3</sup>/hr

**ANCILLARY ITEMS:**

- Heavy duty lay-flat tube ducting
- Spare castor wheels

IIC Option available.

