

**Digitalizing hazardous areas.  
Enabling connectivity.  
Enhancing mobility.**

Ex-Handy 10 Feature Phone Series  
for Industrial Hazardous Areas up to  
Zone 1/21 and Div. 1

**ecom**  
A PEPPERL+FUCHS BRAND



# Ex-Handy 10:

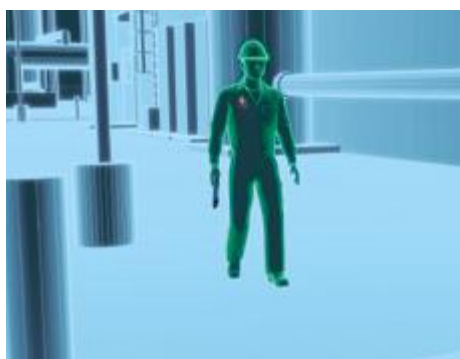
## The Next Generation of Rugged, Intrinsically Safe Feature Phones for Hazardous Areas

Simple, rugged, and practical: The Zone 1/Div. 1 certified 4G/LTE feature phone is ideal for a wide range of applications—from pure communication to lone worker protection and innovative Industry 4.0 applications.



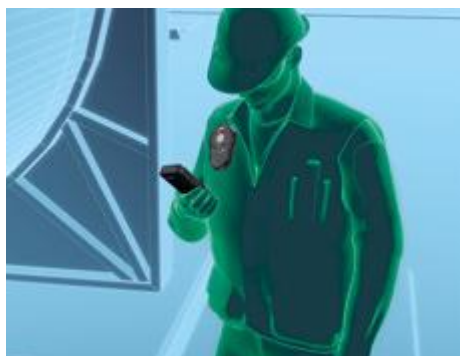
### Maximum Reliability, Global Use

The Ex-Handy 10 offers **both keypad and touch screen operation**. The display is made from **extremely durable, scratch-resistant Gorilla® Glass** and can even be **operated with gloves**. In addition, the device meets all of the requirements for worldwide use, since it supports **21 LTE frequency bands** and is **SIM lock-free**. The Ex-Handy 10 has been certified for **Zone 1/21 and Div. 1**, and offers all of the important **international certifications**.



### More Flexibility and Higher Productivity

The Ex-Handy 10 is designed for the **harshest environments**—it is operable in **temperatures from -20 °C to +60 °C** and has good readability in direct sunlight. The phone has an optional 8 MP camera, which includes autofocus, LED flash, and flashlight. An **advanced rechargeable battery** and energy management enable outstanding operating times.



### Safety for Daily Use

The Ex-Handy 10 offers **lone worker protection (LWP)** for use in hazardous areas to ensure the safety of individuals working alone. In an emergency user configurable **emergency buttons** or inbuilt sensors monitor personnel location and position to maximise their safety. The **Android** operating system ensures regular patches and security updates.

### Operating System

- Android™  
Latest firmware release

### Connectivity

- WiFi 2.4 GHz and 5 GHz support
- WiFi standards 802.11 a/b/g/n/e/k/r/h
- Bluetooth® 4.2 (incl. BLE)
- NFC
- GPS/A-GPS/Glonass/Beidou

### LTE

- Supports 21 LTE bands

### Ports

- Waterproof magnetic USB 2.0 connection

### Camera

- 8 MP camera with autofocus, LED flash and flashlight function

### Dedicated Keys

- User programmable buttons for special functions, e.g. alarms

### Memory

- 2 GB RAM + 16 GB ROM
- SD card up to 128 GB

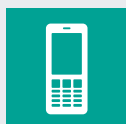
### Power

- Powerful battery for a full working day

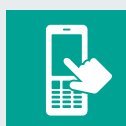
### Highlights



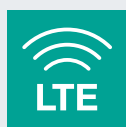
Global approvals for Zone 1/21, Div. 1 and Zone 2/22, Div. 2



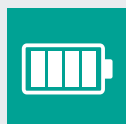
Extremely rugged dust and waterproof housing with a scratch-resistant display



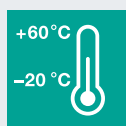
Supports both keypad and touch screen operation



Supports 21 LTE frequency bands and has no SIM lock for use around the world



Powerful battery for a full working day



Made for use in ambient temperatures from -20 °C to +60 °C



For more information, visit:  
[www.pepperl-fuchs.com/ex-handy-10](http://www.pepperl-fuchs.com/ex-handy-10)

android

# Mobile Worker Concept: Innovative Solutions from a Single Source

Pepperl+Fuchs offers a range of coordinated peripherals, accessories and software solutions as an ideal complement to the Ex-Handy 10 feature phone.

## Exploring Mobility

Organizations are realizing the scope of what mobility solutions can really do for their business. Today, the focus is on technologies that reduce cost and improve efficiencies. Game changing breakthroughs in mobile computing and communication technologies are enabling industries to improve

workforce productivity, data quality, and the speed and accuracy of decision-making. The Internet of Things (IoT) will gain a strong foothold across the industry, changing how companies utilize labor and allowing for more effective utilization of resources.



## Digital Products and Services

Digital Products and Services is a solution that combines automated staging, mobile device management, and device analytics. It can also be used as a full-fledged enterprise mobility management system if desired.

At the customer's request, ecom's mobile devices can ship from the factory with predefined custom configurations such as security settings, applications, and wireless setup. This allows devices to be used anywhere in the world immediately upon delivery.

The devices can be managed via the ecom online platform and updated remotely at any time during operation without having to be sent to local IT staff or the head office.

Cloud servers hosted in Germany meet the highest data protection standards and guarantee high data availability and security.

One-time staging and enrolling can also be done internally via ecom's production servers. If desired, device diagnostics and analytics can collect real-time operational data and fault analyses to continuously monitor device status and fix malfunctions preventively or immediately.

Additionally, the platform analyzes historical data to detect critical software events, installations, and other safety-critical processes. A statistical accumulation of events can be used to establish correlations and causalities between software errors, geographical data, and Wi-Fi coverage, for example.

Digital Products and Services is a ready-to-use service that ensures quality and security for all devices. This saves time and valuable resources.

Find out more:  
[www.pepperl-fuchs.com/ex-handy-10](http://www.pepperl-fuchs.com/ex-handy-10)



## Digital Products and Services

### Staging and Enrolling

eCSL—Custom Service Load

- Custom device preconfiguration
- Delivered ready-to-use

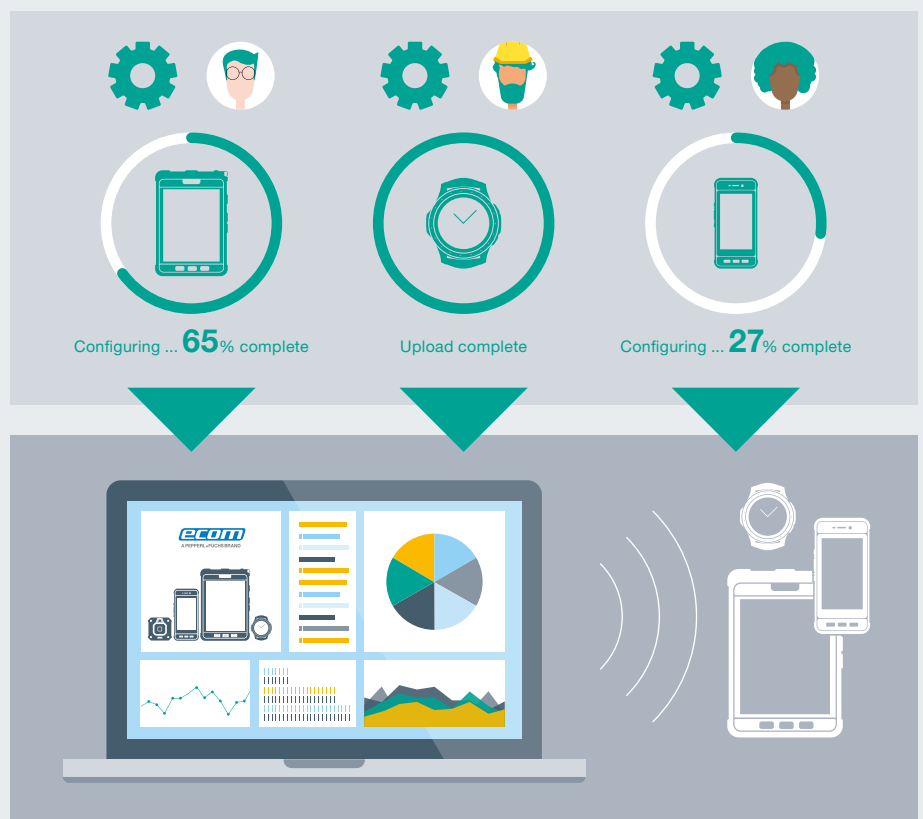
### Configuring and Management

eMDM—Mobile Device Management

- Update devices around the world simultaneously

### Device Diagnostics

- Analytics help avoid problems and correct errors



## Accessories and Peripherals

Components such as remote speaker microphone (RSM) and headsets expand the range of applications for the Ex-Handy 10 and are perfectly suited for future IIoT applications.

Need an intrinsically safe smartphone?



Find out more:  
[www.pepperl-fuchs.com/smart-ex-02](http://www.pepperl-fuchs.com/smart-ex-02)

### Accessories

- Leather case LC H10
- Leather holster LH H10
- Cradle CR H10

Additional accessories can be found at  
[www.pepperl-fuchs.com/ex-handy-10](http://www.pepperl-fuchs.com/ex-handy-10)

### Compatible Peripherals

#### Smart-Ex® Watch 01

Smartwatch



#### Ident-Ex® 01

Auto ID Scanner



#### CUBE 800

Ex-Camera



#### RSM-Ex® 01

Remote  
Speakermic



## Optimal Service, Global Support

The Ex-Handy 10 was developed completely in-house by Pepperl+Fuchs with ecom engineers. The smartphone, which offers absolute safety and a huge range of applications, is based on 30 years of experience and a high level of application expertise.

Pepperl+Fuchs' extensive sales and service network provides support around the globe. Specialized technicians are available close to you. Further support with software integration is available via our engineering and development teams.

To protect your investment, we offer a three-year service level agreement so your mobile assets are covered for your operational needs.





# Digitalizing hazardous areas. Enabling connectivity. Enhancing mobility.



The Pepperl+Fuchs brand ecom is a leading manufacturer of comprehensive solutions for intrinsically safe mobile computing and industrial communication in hazardous areas.

Since 1986, ecom has played a key role in pioneering explosion protection for mobile devices. The company has demonstrated its technological expertise with a number of innovations and tried-and-tested mobile solutions—from intrinsically safe smartphones, cell phones, and tablets to accessories like wireless headsets and barcode scanners. ecom's new Digital Products and Services platform completes the portfolio, offering automated staging during device production, mobile device management, and device analytics; the platform can also be used as a full-fledged enterprise mobility management system.

Each of ecom's solutions combines uncompromised security with the highest level of functionality, and includes all necessary approvals and certificates for global use. A global sales and support network with service centers in Germany, the US, Singapore, and the United Arab Emirates completes the range of products.

Customers around the world know the Pepperl+Fuchs Group as a pioneer and innovator in electrical explosion protection and sensor technology. Building on decades of experience and technical leadership, the company develops components and solutions tailored to the needs of its customers. Solutions for mobile safety and communication from the Pepperl+Fuchs brand ecom enable customer applications to be digitalized quickly and easily. This opens up completely new possibilities and increases the safety, efficiency, and transparency of operations in both conventional and Industry 4.0 applications.

For more information about ecom, visit:

[www.ecom-ex.com](http://www.ecom-ex.com) and [www.pepperl-fuchs.com](http://www.pepperl-fuchs.com)

# Your automation, our passion.

## Explosion Protection

- Intrinsic Safety Barriers
- Signal Conditioners
- FieldConnex® Fieldbus
- Remote I/O Systems
- Electrical Ex Equipment
- Purge and Pressurization
- Industrial HMI
- Mobile Computing and Communications
- HART Interface Solutions
- Surge Protection
- Wireless Solutions
- Level Measurement

## Industrial Sensors

- Proximity Sensors
- Photoelectric Sensors
- Industrial Vision
- Ultrasonic Sensors
- Rotary Encoders
- Positioning Systems
- Inclination and Acceleration Sensors
- Fieldbus Modules
- AS-Interface
- Identification Systems
- Displays and Signal Processing
- Connectivity

### Pepperl+Fuchs Quality

Download our latest policy here:

[www.pepperl-fuchs.com/quality](http://www.pepperl-fuchs.com/quality)



**PEPPERL+FUCHS**



THORNE &  
**DERRICK**  
INTERNATIONAL

**Thorne & Derrick**  
+44 (0) 191 410 4292  
[www.heatingandprocess.com](http://www.heatingandprocess.com)