

# SPARTAN LED

## Zone 2/22 SPZ Mid Power Bay Light



**rayTEC**



### Power / Performance

High lumen output up to 15,000 lumens, designed to directly replace traditional discharge light sources up to 250W SON.



### Robust and Durable

Robust and durable construction from marine grade aluminium and with a wide operating temperature for even the most challenging conditions.



### Intelligent Emergency

Self-testing emergency battery providing up to 3 hours emergency back-up.



### Multiple Beam Angles

Available with a range of beam patterns to effectively light up large open areas. The use of secondary optics means no loss of output on wider angles.

## 5 YEAR WARRANTY

All Raytec luminaires are provided with an industry leading 5 year warranty and have an expected useful life in excess of 10 years. See Warranty Statement for details.



**THORNE &  
DERRICK**  
INTERNATIONAL

**Thorne & Derrick**  
+44 (0) 191 410 4292  
www.heatingandprocess.com

# Technical Specifications

## Certification

ATEX Rating	ATEX, UKEX and IEC Ex rated for Gas and Dust
Certificates	CML21ATEX3317 & IEC Ex CML21.0037 or CML21UKEX3319
Gas	II 3 G D Ex ec mc IIC T4 Gc Ta= -40°C to +60°C (-20°C to +50°C emergency variants)
Dust	Ex tc IIIC T90°C Dc Ta= -40°C to +60°C (-20°C to +50°C emergency variants)
ABS Certificate	# 23-2432337-PDA

## Electrical

	5K	7.5K	10K	12.5K	15K
Input	110-277V 50/60Hz AC only				
Power	40W	60W	80W	100W	120W
Termination	Incoming terminal block suitable for looping 4 core 4mm <sup>2</sup> cable				
Power Factor	>0.95				
Cable Entries	2xM20 as standard (other entries available upon request), dispatched complete with one ATEX/IEC Ex/UKEX approved blanking plug				

## Optical

	5K	7.5K	10K	12.5K	15K
Beam Patterns	30° x 30° or 60° x 60° or 90° x 90° or 120° x 15° or 10° x 10°				
Lumen Output (upto)	5,486lm	8,235lm	10,973lm	13,712lm	16,470lm
LED Type	Platinum Elite SMT LEDs				
Number of LEDs	24	24	48	48	48
CRI	70+				
Colour Temperature	5,700K				

## Mechanical

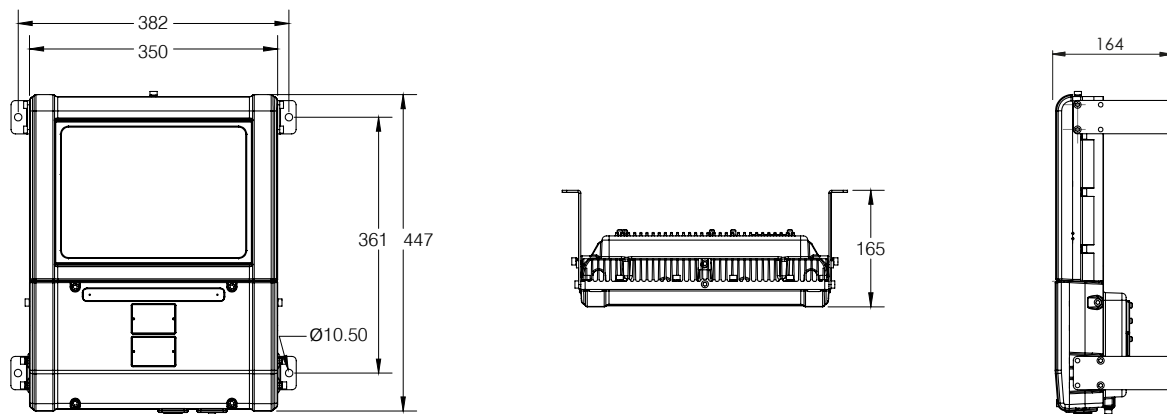
	5K	7.5K	10K	12.5K	15K
Burning Position	Universal				
IP Rating	IP66 & IP67				
Temperature Range	-40°C to +60°C (-40°F to +140°F) -20°C to +50°C for emergency variants (-4°F to +122°F)				
Weight	13.2kg (29.1lbs) 16kg (35.2lbs) for emergency variant				
Enclosure	Marine grade aluminium epoxy powder coated, toughened glass, all external fasteners and brackets are marine grade stainless steel				
Unit Colour	Silver (RAL 9006)				
Installation Instructions	Please see document 1250-D-00005 at <a href="http://www.raytecd.com">www.raytecd.com</a>				
Battery Care	Please see document 0010-D-00001 at <a href="http://www.raytecd.com">www.raytecd.com</a>				
Dimensions	See dimension drawings				
Mounting	Supplied with x4 corner brackets (see dimension drawings)				

## Technical Specifications - Emergency

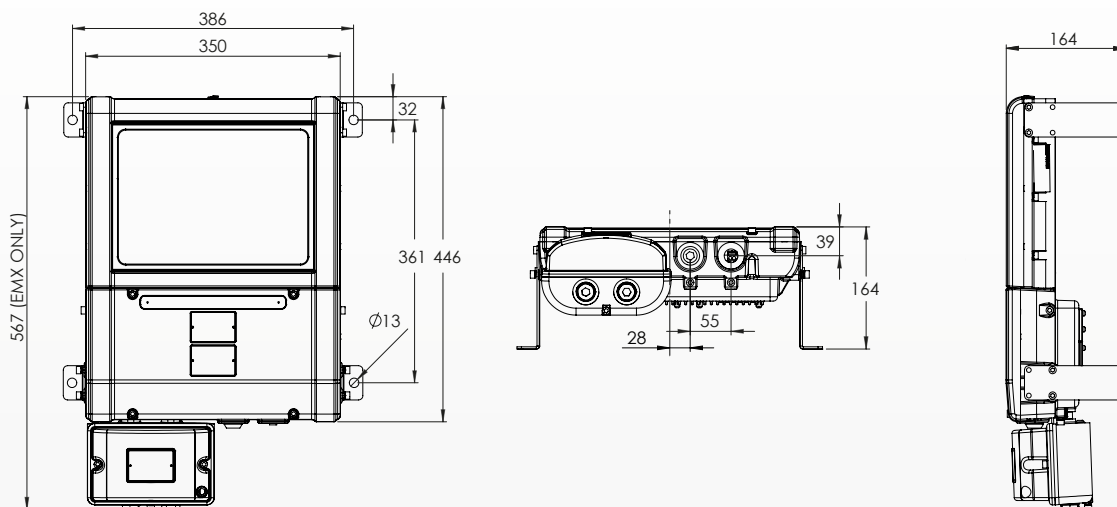
Emergency / Intelligent Emergency	5K	7.5K	10K	12.5K	15K
Function	Self testing intelligent emergency				
System Health Indicator	Bi Colour Indicator LED				
Emergency Duration	180 or 90 mins depending on variant Other options available				
Emergency Output (upto)	4941 lumens (90 mins duration) 2120 lumens (180 mins duration)				
Emergency Battery	NIMH 12V 6.0Ah				
Emergency Charge Time	20 Hours				

## Product Dimensions

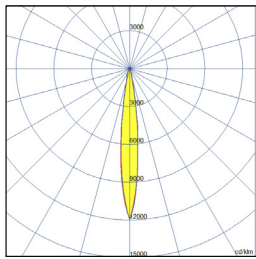
### MPBY - Standard



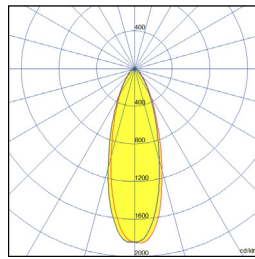
### MPBY - Emergency



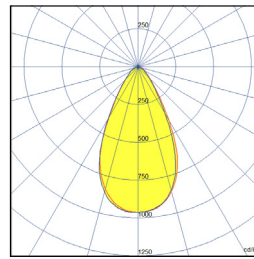
## Beam Patterns



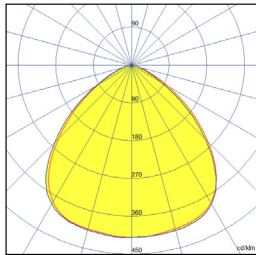
10x10



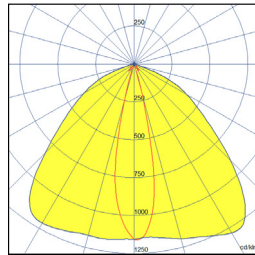
30x30



60x60



90x90



120x15

## Part Code Builder

### SPARTAN Mid Power Bay

Example - SPZ-MPBY15K-W-9090

Family	Model	Light Type	Optics	Emergency	CCT	Entry
SPZ	MPBY5K	W- White Light	3030	EMX90 (90 minute duration)	Not Stated - 5700K	Not Stated - M20
	MPBY7K5		6060	EMX180 (180 minute duration)	4K - 4000K	M25
	MPBY10K		9090			
	MPBY12K5		12015			
	MPBY15K		1010			

## Disclaimer

The information provided in this document was accurate at the time of its creation. However, due to the evolving nature of our products and continuous improvements, there may be changes or updates that occur after its publication.

For the most current and detailed information about our products, please contact our sales team at [sales@raytecd.com](mailto:sales@raytecd.com).