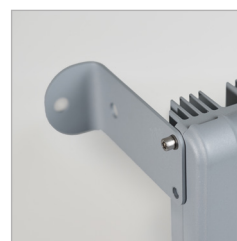


SPARTAN LED

Zone 1/21 SPX Mid Power Bay Light



rayTEC



Power / Performance

High lumen output up to 15,000 lumens, designed to directly replace traditional discharge light sources up to 250W SON.



Robust and Durable

Robust and durable construction from marine grade aluminium and with a wide operating temperature for even the most challenging conditions.



Intelligent Emergency

Self-testing emergency battery providing up to 3 hours emergency back-up.



Multiple Beam Angles

Available with a range of beam patterns to effectively light up large open areas. The use of secondary optics means no loss of output on wider angles.

5 YEAR WARRANTY

All Raytec luminaires are provided with an industry leading 5 year warranty and have an expected useful life in excess of 10 years. See Warranty Statement for details.



Technical Specifications

Certification

ATEX Rating	ATEX, UKEX and IEC Ex rated for Gas and Dust
Certificates	CML21ATEX3317 & IEC Ex CML21.0037 or CML21UKEX3319
Gas	II 2 G D Ex eb mb IIC T4 Gb Ta= -40°C to +60°C (-20°C to +50°C emergency variants)
Dust	Ex tb IIIC T90°C Db Ta= -40°C to +60°C (-20°C to +50°C emergency variants)
ABS Certificate	# 23-2432337-PDA

Electrical

	5K	7.5K	10K	12.5K	15K
Input	110-277V 50/60Hz AC only				
Power	40W	60W	80W	100W	120W
Termination	Incoming terminal block suitable for looping 4 core 4mm ² cable				
Power Factor	>0.95				
Cable Entries	2xM20 as standard (other entries available upon request), dispatched complete with one ATEX/IEC Ex/UKEX approved blanking plug				

Optical

	5K	7.5K	10K	12.5K	15K
Beam Patterns	30° x 30° or 60° x 60° or 90° x 90°				
Lumen Output (upto)	5,223lm	7,774lm	10,448lm	13,059lm	15,547lm
LED Type	Platinum Elite SMT LEDs				
Number of LEDs	24	24	48	48	48
CRI	70+				
Colour Temperature	5,700K				

Mechanical

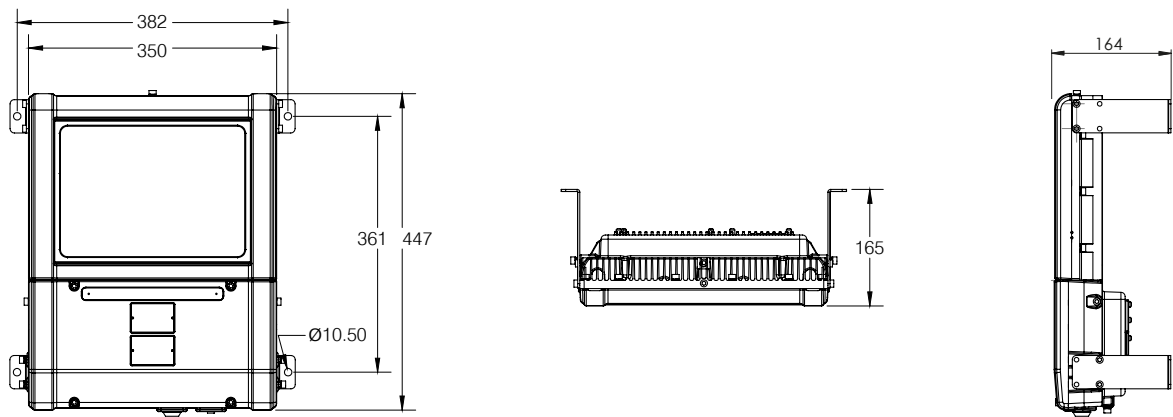
	5K	7.5K	10K	12.5K	15K
Burning Position	Universal				
IP Rating	IP66 & IP67				
Temperature Range	-40°C to +60°C (-40°F to +140°F) -20°C to +50°C for emergency variants (-4°F to +122°F)				
Weight	13.2kg (29.1lbs) 16kg (35.2lbs) for emergency variant				
Enclosure	Marine grade aluminium epoxy powder coated, toughened glass, all external fasteners and brackets are marine grade stainless steel				
Unit Colour	Silver (RAL 9006)				
Installation Instructions	Please see document 1250-D-00005 at www.raytecled.com				
Battery Care	Please see document 0010-D-00001 at www.raytecled.com				
Dimensions	See dimension drawings				
Mounting	Supplied with x4 corner brackets (see dimension drawings)				

Technical Specifications - Emergency

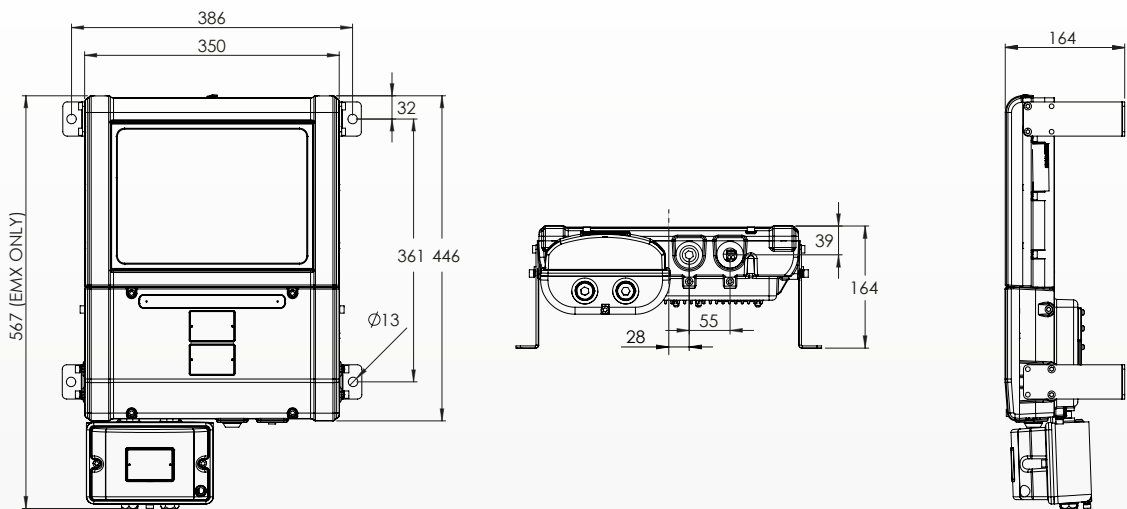
Emergency / Intelligent Emergency	5K	7.5K	10K	12.5K	15K
Function	Self testing intelligent emergency				
System Health Indicator	Bi Colour Indicator LED				
Emergency Duration	180 or 90 mins depending on variant Other options available				
Emergency Output (upto)	3922 lumens (90 mins duration) 1961 lumens (180 mins duration)				
Emergency Battery	NIMH 12V 6.0Ah				
Emergency Charge Time	20 Hours				

Product Dimensions

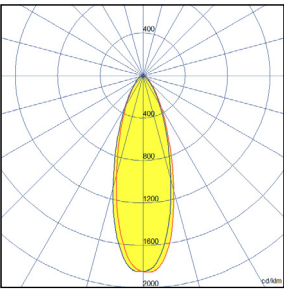
MPBY - Standard



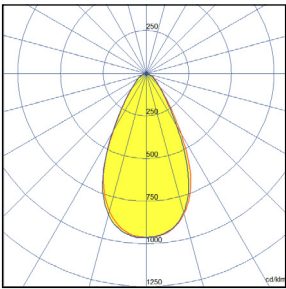
MPBY - Emergency



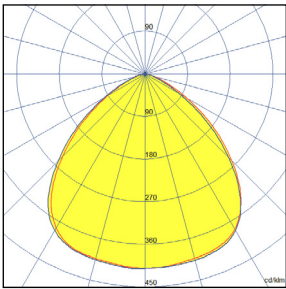
Beam Patterns



30x30



60x60



90x90

Part Code Builder

SPARTAN Mid Power Bay

Example - SPX-MPBY15K-W-9090-EMX90						
Family	Model	Light Type	Optics	Emergency	CCT	Entry
SPX	MPBY5K	W- White Light	3030	EMX90 (90 minute duration)	Not Stated - 5700K	Not Stated - M20
	MPBY7K5		6060	EMX180 (180 minute duration)	4K - 4000K	M25
	MPBY10K		9090			
	MPBY12K5					
	MPBY15K					

Disclaimer

The information provided in this document was accurate at the time of its creation. However, due to the evolving nature of our products and continuous improvements, there may be changes or updates that occur after its publication.

For the most current and detailed information about our products, please contact our sales team at sales@raytecdled.com.